

LOC/DME I-GHO 110.75 Chan 44 (Y)	APP CRS 092°	Rwy Idg 4300 TDZE 22 Apt Elev 22
--	------------------------	---

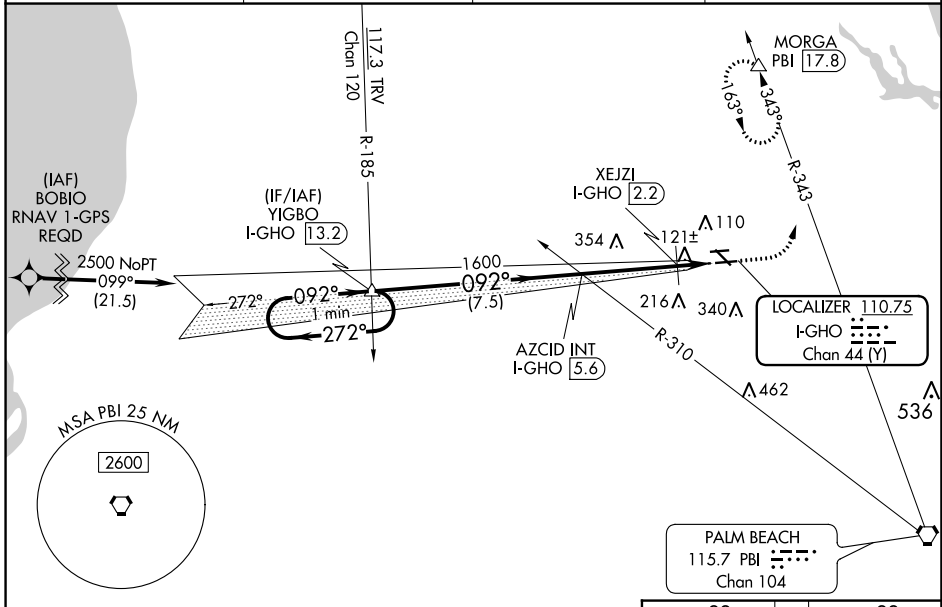
ILS or LOC RWY 9R

NORTH PALM BEACH COUNTY GENERAL AVIATION (F45)

⚠ NA Circling NA to Rwys 9L and 27R. DME required. When local altimeter setting not received, use Palm Beach Intl altimeter setting and increase all DA to 300 and all visibilities 1/8 SM; increase all MDAs 40 feet; increase XEJZI Fix Minimums S-LOC 9R Cats C/D visibility 1/8 SM. Rwy 9R helicopter visibility reduction below 3/4 SM NA.

MISSED APPROACH: Climb to 500 then climbing left turn to 2000 on hdg 033° and on PBI VORTAC R-343 to MORGA PBI 17.8 DME and hold.

AWOS-3 119.975	PALM BEACH APP CON 128.3 317.4	CLNC DEL 120.825	UNICOM 123.075 (CTAF) 0
--------------------------	--	----------------------------	--



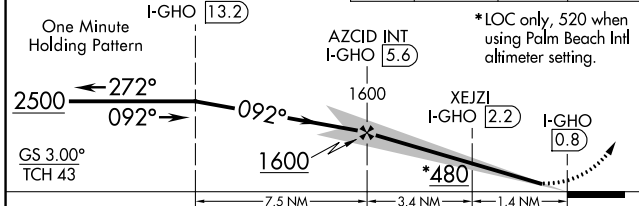
SE-3, 22 FEB 2024 to 21 MAR 2024

SE-3, 22 FEB 2024 to 21 MAR 2024

VGSI and ILS glidepath not coincident (VGSI Angle 3.00/TCH 40).

500	2000	PBI R-343	MORGA
-----	------	-----------	-------

hdg 033°



CATEGORY	A	B	C	D
S-ILS 9R		272-3/4	250 (300-3/4)	
S-LOC 9R	480-1	458 (500-1)	480-1 3/8	458 (500-1 1/8)
C CIRCLING	480-1	458 (500-1)	700-2 678 (700-2)	720-2 1/4 698 (700-2 1/4)
XEJZI FIX MINIMUMS				
S-LOC 9R	420-1	398 (400-1)	420-1 1/8	398 (400-1 1/8)
C CIRCLING	460-1 438 (500-1)	480-1 458 (500-1)	700-2 678 (700-2)	720-2 1/4 698 (700-2 1/4)

ELEV 22	TDZE 22
---------	---------

*LOC only, 520 when using Palm Beach Intl altimeter setting.

MIRL Rwy 9R-27L and 14-32 **0**
REIL Rwy 9R, 14, 27L and 32 **0**

FAF to MAP 4.8 NM

Knots	60	90	120	150	180
Min:Sec	4:48	3:12	2:24	1:55	1:36

WAAS CH 40310 W14A	APP CRS 142°	Rwy Idg 4300 TDZE 21 Apt Elev 22
--	------------------------	---

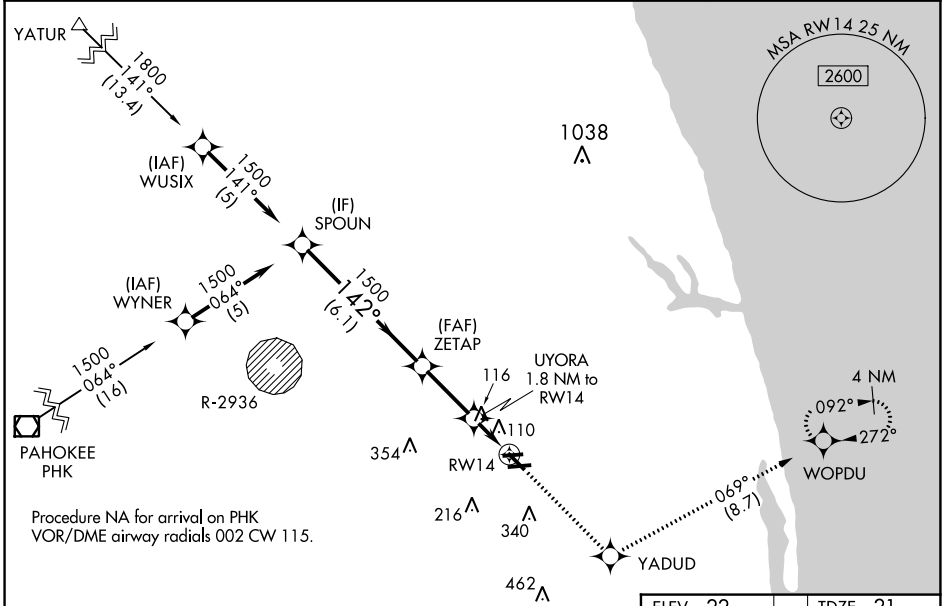
RNAV (GPS) RWY 14

NORTH PALM BEACH COUNTY GENERAL AVIATION (F45)

⚠ Circling NA to Rwys 9L and 27R. For uncompensated Baro-VNAV systems, LNAV/VNAV NA below -15°C (5°F) or above 54°C (130°F). DME/DME RNP-0.3 NA. When local altimeter not received, use Palm Beach Intl altimeter setting and increase LPV DA to 352 feet; increase LNAV/VNAV DA to 412 feet and all visibilities ½ SM; increase all MDA 40 feet and LNAV Cats C/D visibility ½ SM. Rwy 14 helicopter visibility reduction below ¾ SM NA. Baro-VNAV and VDP NA when using Palm Beach Intl altimeter setting.

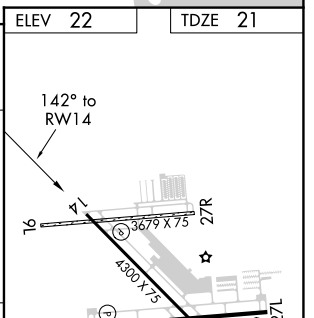
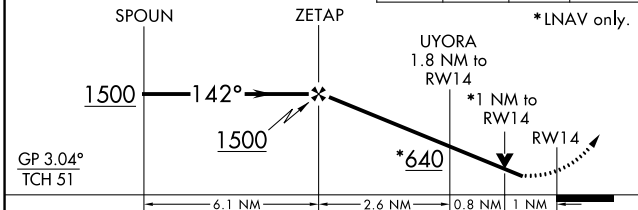
MISSED APPROACH: Climb to 2300 direct YADUD and on track 069° to WOPDU and hold.

AWOS-3 119.975	PALM BEACH APP CON 128.3 317.4	CLNC DEL 120.825	UNICOM 123.075 (CTAF) 0
--------------------------	--	----------------------------	-----------------------------------



VGSI and RNAV glidepath not coincident (VGSI Angle 3.00/TCH 40).

2300	YADUD	WOPDU
↑	✧	✧
	tr 069°	



CATEGORY	A	B	C	D
LPV DA		324-7/8	303 (400-7/8)	
LNAV/VNAV DA		384-1	363 (400-1)	
LNAV MDA		380-1	359 (400-1)	
CIRCLING	460-1 438 (500-1)	480-1 458 (500-1)	700-2 678 (800-2)	720-2¼ 698 (700-2¼)

MRL Rwy 9R-27L and 14-32
REIL Rwy 9R, 14, 27L and 32

SE-3, 22 FEB 2024 to 21 MAR 2024

SE-3, 22 FEB 2024 to 21 MAR 2024

WAAS CH 93910 W27A	APP CRS 272°	Rwy Idg 4300 TDZE 22 Apt Elev 22
--	------------------------	---

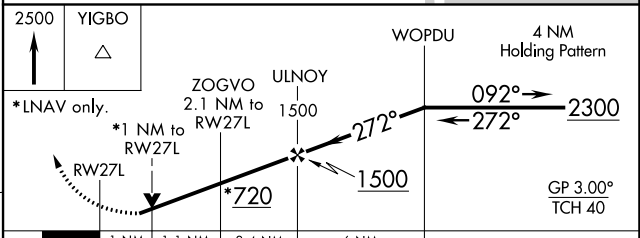
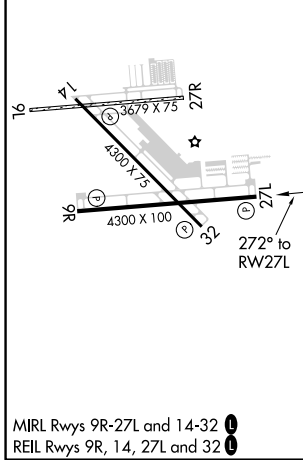
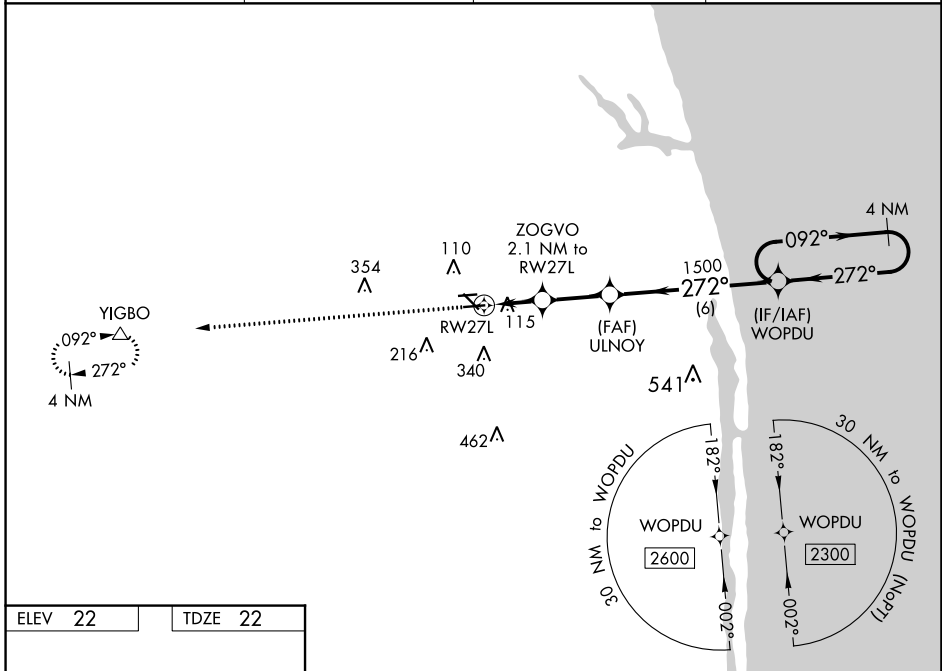
RNAV (GPS) RWY 27L

NORTH PALM BEACH COUNTY GENERAL AVIATION (F45)

⚠ Circling NA to Rwy 9L and 27R. For uncompensated Baro-VNAV systems, LNAV/VNAV NA below -1.5°C (5°F) or above 54°C (130°F). Baro-VNAV and VDP NA when using Palm Beach Intl altimeter setting. DME/DME RNP-0.3 NA. When local altimeter not received, use Palm Beach Intl altimeter setting and increase LPV DA to 369 feet and all visibilities 1/8 SM; increase LNAV/VNAV DA to 423 feet and all visibilities 1/8 SM; increase all MDA 40 feet and Cat C/D visibility 1/8 SM. Rwy 27L helicopter visibility reduction below 3/4 SM NA.

⚠ MISSED APPROACH: Climb to 2500 direct YIGBO and hold.

AWOS-3 119.975	PALM BEACH APP CON 128.3 317.4	CLNC DEL 120.825	UNICOM 123.075 (CTAF)
--------------------------	--	----------------------------	---------------------------------



CATEGORY	A	B	C	D
LPV DA		341-7/8	319 (400-7/8)	
LNAV/VNAV DA		395-1	373 (400-1)	
LNAV MDA		380-1	358 (400-1)	
C CIRCLING	460-1 438 (500-1)	480-1 458 (500-1)	700-2 678 (700-2)	720-2 1/4 698 (700-2 1/4)

SE-3, 22 FEB 2024 to 21 MAR 2024

SE-3, 22 FEB 2024 to 21 MAR 2024

WAAS CH 78024 W09A	APP CRS 092°	Rwy Idg 4300 TDZE 22 Apt Elev 22
---------------------------------	------------------------	---

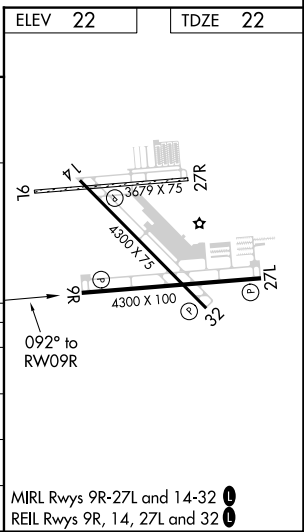
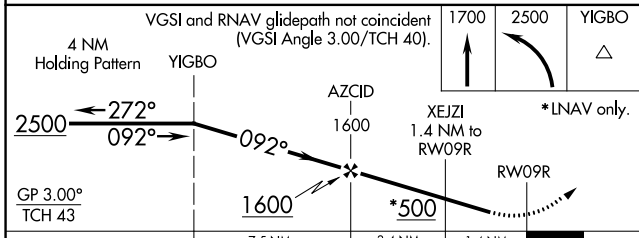
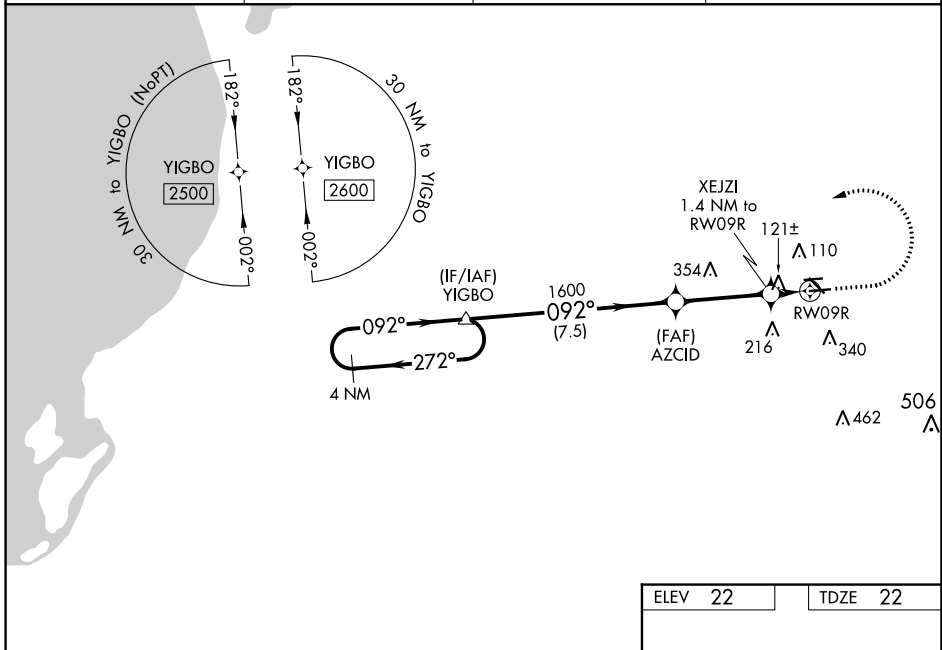
RNAV (GPS) RWY 9R

NORTH PALM BEACH COUNTY GENERAL AVIATION (F45)

NA Circling NA to Rws 9L and 27R. Baro-VNAV NA when using Palm Beach Intl altimeter setting. For uncompensated Baro-VNAV systems, LNAV/VNAV NA below -1.5°C (5°F) or above 54°C (130°F). DME/DME RNP-0.3 NA. When local altimeter not received, use Palm Beach Intl altimeter setting and increase LPV DA to 300 feet; increase LNAV/VNAV DA to 316 feet; increase all MDA 40 feet and LNAV Cats C/D visibility 1/8 SM. Rwy 9R helicopter visibility reduction below 3/4 SM NA.

MISSED APPROACH: Climb to 1700 then climbing left turn to 2500 direct YIGBO and hold.

AWOS-3 119.975	PALM BEACH APP CON 128.3 317.4	CLNC DEL 120.825	UNICOM 123.075 (CTAF)
--------------------------	--	----------------------------	---------------------------------



CATEGORY	A	B	C	D
LPV DA	272-7/8 250 (300-7/8)			
LNAV/VNAV DA	288-7/8 266 (300-7/8)			
LNAV MDA	420-1	398 (400-1)	420-1 1/8	398 (400-1 1/8)
CIRCLING	460-1 438 (500-1)	480-1 458 (500-1)	700-2 678 (700-2)	720-2 1/4 698 (700-2 1/4)

SE-3, 22 FEB 2024 to 21 MAR 2024

SE-3, 22 FEB 2024 to 21 MAR 2024