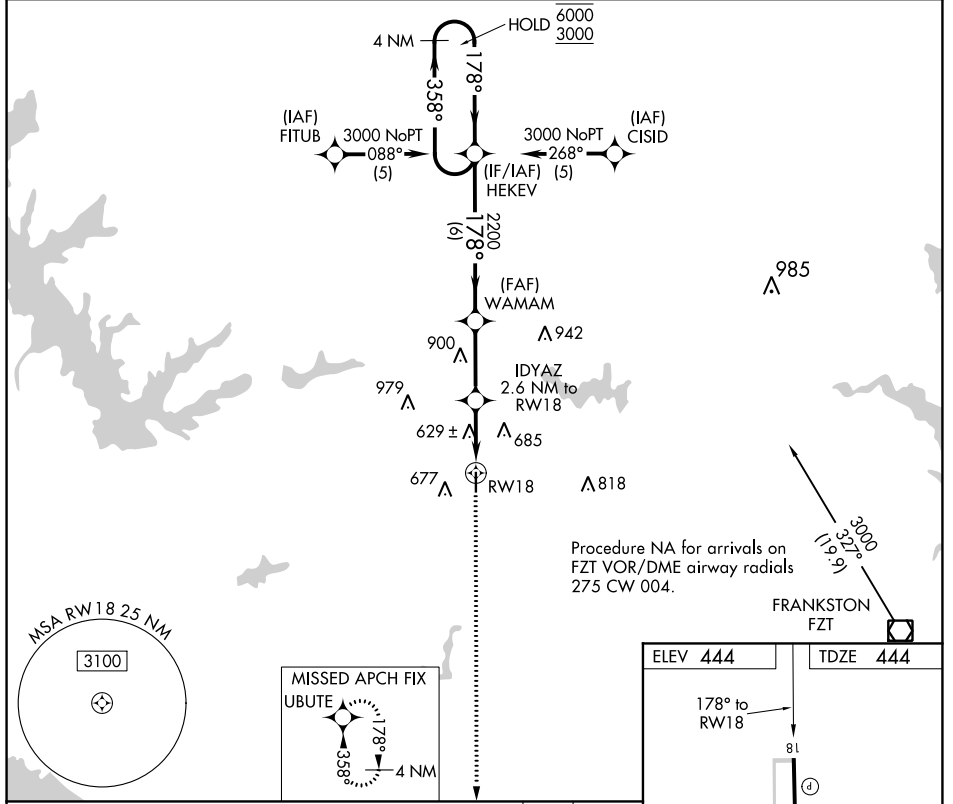


APP CRS	Rwy Idg	3988
178°	TDZE	444
	Apt Elev	444

RNAV (GPS) RWY 18

ATHENS MUNI (F44)

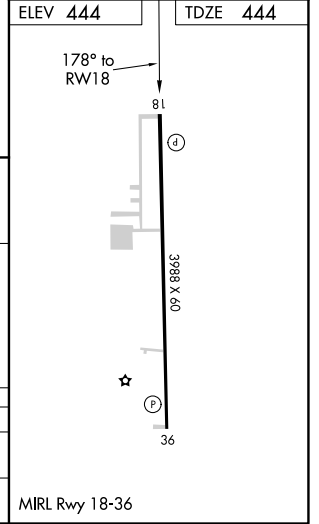
RNP APCH.		MISSED APPROACH: Climb to 3000 direct UBUTE and hold.
<p>▽ Rwy 18 helicopter visibility reduction below 3/4 SM NA. ▲ When local altimeter setting not received, procedure NA.</p>		
AWOS-3PT 119.6	FORT WORTH CENTER 135.25 265.1	UNICOM 123.0 (CTAF)



SC-2, 19 MAY 2022 to 16 JUN 2022

SC-2, 19 MAY 2022 to 16 JUN 2022

4 NM Holding Pattern	HEKEV	WAMAM	IDYAZ 2.6 NM to RW18	3000	UBUTE
6000 ← 358°	178° →	2200	1320	1.3 NM to RW18	1.3 NM
6 NM		2.8 NM		1.3 NM	1.3 NM
CATEGORY	A	B	C	D	
RNAV MDA	880-1	436 (500-1)	NA		
CIRCLING	980-1 536 (600-1)	1000-1 556 (600-1)	NA		

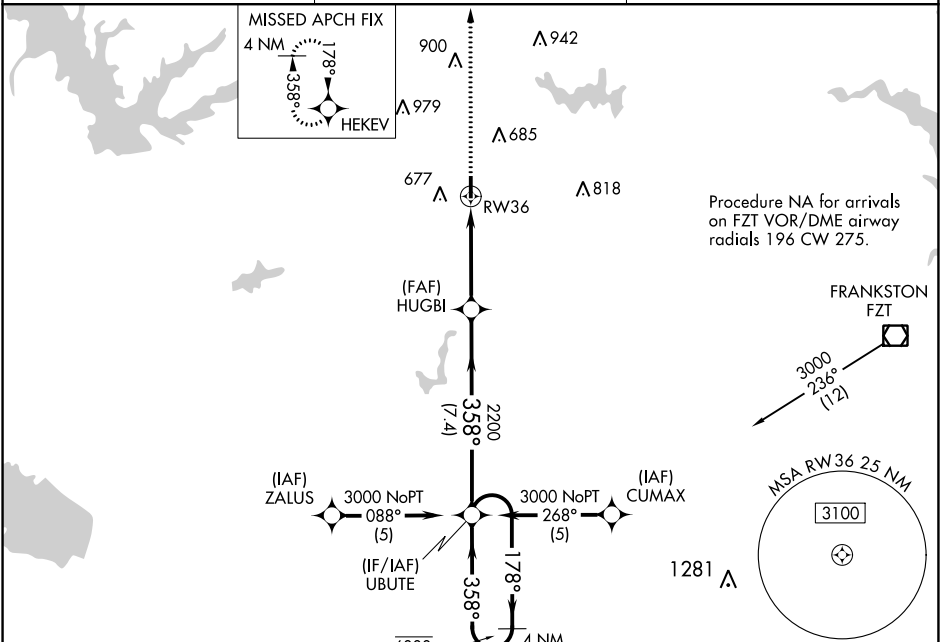


APP CRS	Rwy Idg	3988
358°	TDZE	444
	Apt Elev	444

RNAV (GPS) RWY 36

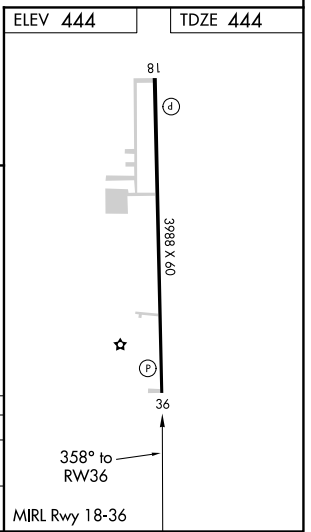
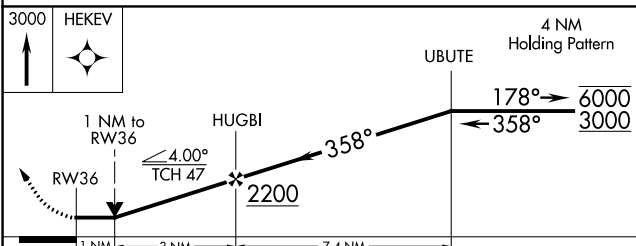
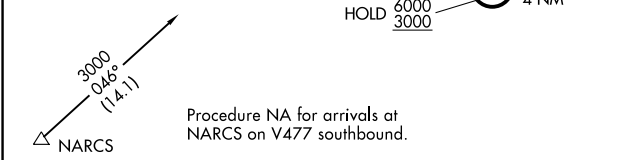
ATHENS MUNI (F44)

RNP APCH.		MISSED APPROACH: Climb to 3000 direct HEKEV and hold.
<p>▽ ▲</p> <p>Rwy 36 helicopter visibility reduction below 3/4 SM NA. When local altimeter setting not received, procedure NA.</p>		
AWOS-3PT 119.6	FORT WORTH CENTER 135.25 265.1	UNICOM 123.0 (CTAF)



Procedure NA for arrivals on FZT VOR/DME airway radials 196 CW 275.

Procedure NA for arrivals at NARCS on V477 southbound.



CATEGORY	A	B	C	D
LNVA MDA	900-1	456 (500-1)		NA
CIRCLING	980-1 536 (600-1)	1000-1 556 (600-1)		NA

SC-2, 19 MAY 2022 to 16 JUN 2022

SC-2, 19 MAY 2022 to 16 JUN 2022