

APP CRS	Rwy Idg	5000
121°	TDZE	1086
	Apt Elev	1086

RNAV (GPS) RWY 12

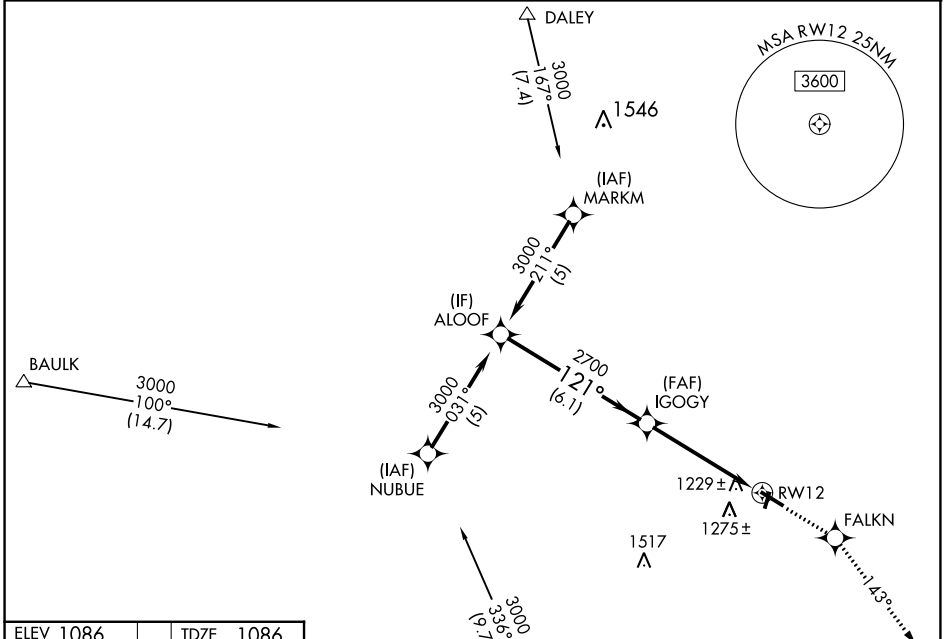
MONROE MUNI (EFT)

RNP APCH-GPS.

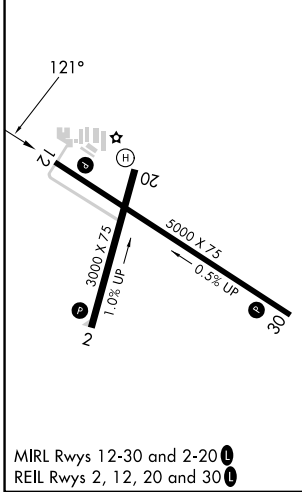
V VDP NA when using Altimeter setting. When local altimeter setting not received, use Altimeter setting and increase all MDA 100 feet, increase LNAV Cat C/D and Circling Cat C visibility ¼ mile. Rwy 12 helicopter visibility reduction below ¾ SM NA. Circling to Rwy 2-20 NA at night.

MISSED APPROACH:
Climb to 3000 direct FALKN and on track 143° to DAVIS and hold.

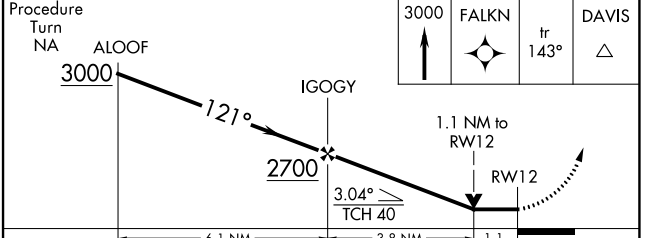
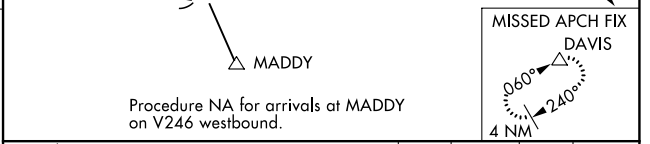
AWOS-3 118.375	ROCKFORD APP CON 126.0 327.0	UNICOM 123.05 (CTAF) 0
--------------------------	--	----------------------------------



ELEV 1086	TDZE 1086
-----------	-----------



MIRL Rwy 12-30 and 2-20 **0**
REL Rwy 2, 12, 20 and 30 **0**



CATEGORY	A	B	C	D
LNAV MDA	1480-1 394 (400-1)			1480-1¼ 394 (400-1½)
CIRCLING	1540-1 454 (500-1)	1640-1 554 (600-1)	1640-1½ 554 (600-1½)	1640-2 554 (600-2)

MONROE, WISCONSIN
Orig-B 20MAY21

42°37'N-89°35'W

RNAV (GPS) RWY 12

EC-3, 22 FEB 2024 to 21 MAR 2024

EC-3, 22 FEB 2024 to 21 MAR 2024