

ABILENE, TEXAS

VOR/DME RWY 34

VOR/DME TQA 111.6 Chan 53	APCH CRS 340°	Rwy Ldg 13,500 TDZE 1788 Arprt Elev 1790
---	-------------------------	---

AL-2 [USAF]

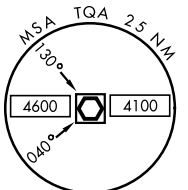
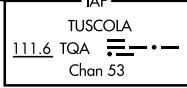
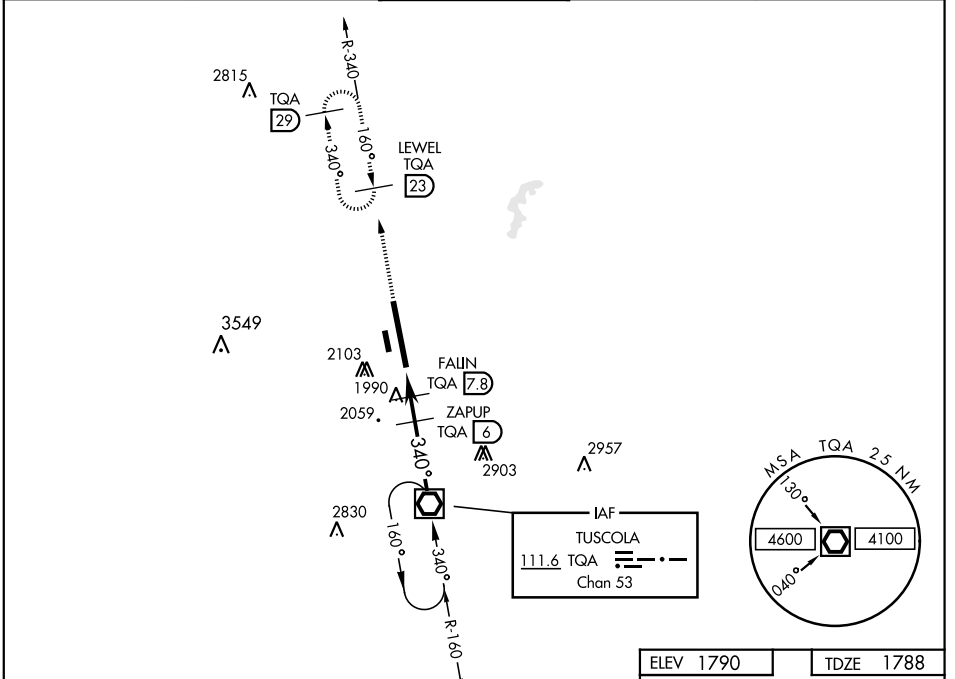
DYESS AFB (KDYS)

* When ALS inop, increase CAT AB RVR to 55 and vis to 1 mile, CAT CDE RVR vis to 1 3/8 miles.
 ** Circling to other than Rwy 16 NA

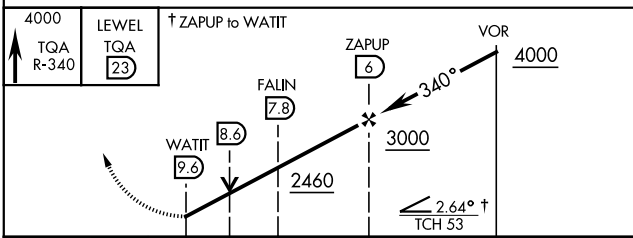


MISSED APPROACH: Climb to 4000 via TQA VOR/DME R-340 to LEWEL and hold.

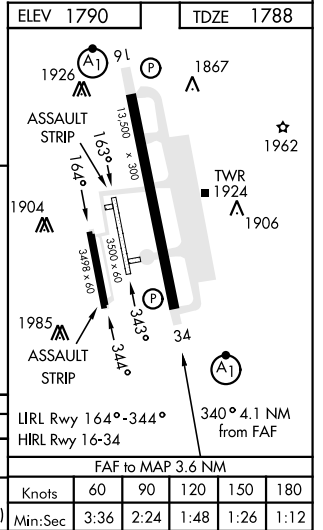
ATIS ★ 269.175	ABILENE APP CON 125.0 338.3 EAST 127.2 282.3 WEST	DYESS TOWER 133.0 257.675	GND CON 118.35 275.8	ASR
--------------------------	---	-------------------------------------	--------------------------------	-----



EMERG SAFE ALT 100 NM 4600



CATEGORY	A	B	C	D	E
S-34 *	2260/24	472 (500-1/2)	2260/50	472 (500-1)	
CIRCLING **	2300-1 510 (600-1)	2320-1 530 (600-1)	2460-1 3/4 670 (700-1 3/4)	2460-2 670 (700-2)	2460-2 1/4 670 (700-2 1/4)



ELEV 1790	TDZE 1788				
LIRL Rwy 164°-344°					
HIRL Rwy 16-34					
FAF to MAP 3.6 NM					
Knots	60	90	120	150	180
Min:Sec	3:36	2:24	1:48	1:26	1:12

ABILENE, TEXAS

32°25' -99°51'W

DYESS AFB (KDYS)

Amdt 3 10NOV16

VOR/DME RWY 34

SC-2, 22 FEB 2024 to 21 MAR 2024

SC-2, 22 FEB 2024 to 21 MAR 2024