

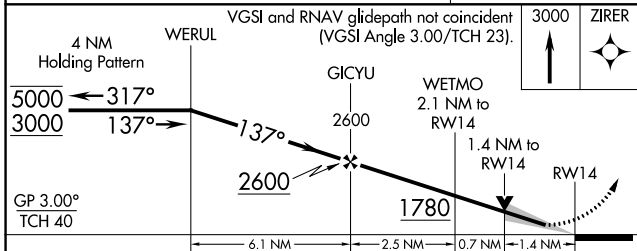
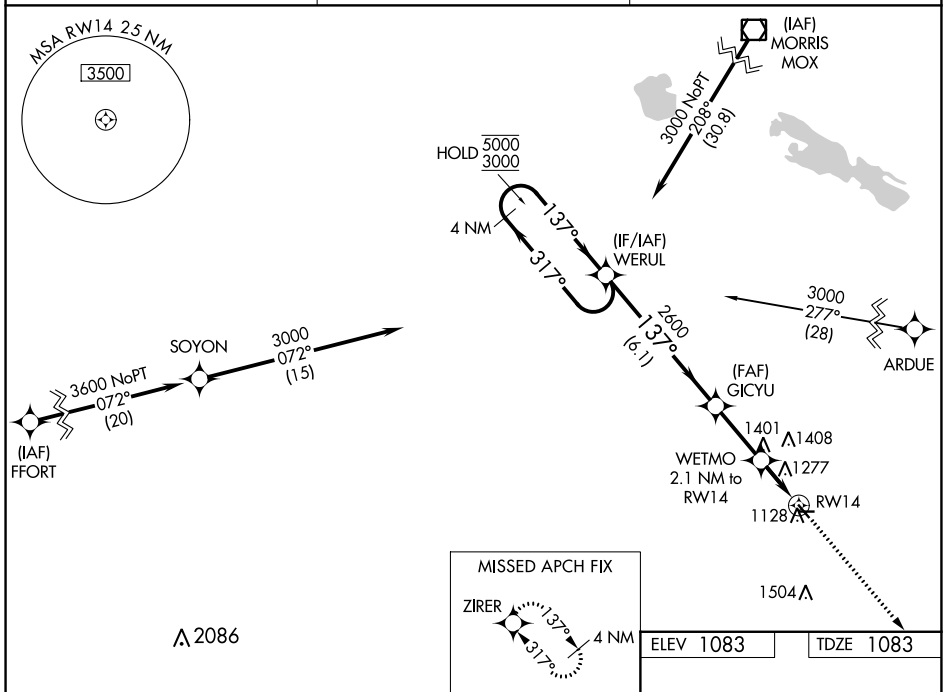
WAAS CH 63030 W14A	APP CRS 137°	Rwy Idg TDZE Apt Elev	3300 1083 1083
--	------------------------	-----------------------------	---

RNAV (GPS) RWY 14

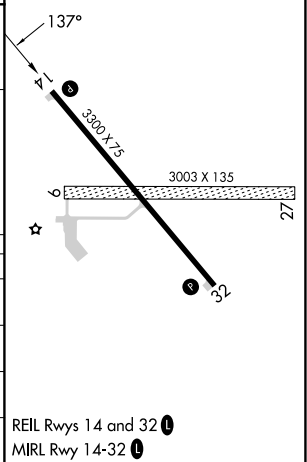
LAC QUI PARLE COUNTY (DXX)

RNP APCH - GPS.	MISSED APPROACH: Climb to 3000 direct ZIRER and hold.
<p>Circling NA to Rwys 9 and 27. For uncompensated Baro-VNAV systems, LNAV/VNAV NA below -17°C or above 54°C.</p>	

AWOS-3 118.975	MINNEAPOLIS CENTER 128.5 306.2	UNICOM 122.8 (CTAF) 0
--------------------------	--	---------------------------------



CATEGORY	A	B	C	D
LPV DA	1283-1 200 (200-1)			NA
LNAV/VNAV DA	1572-1 ³ / ₈ 489 (500-1 ³ / ₈)			NA
LNAV MDA	1540-1	457 (500-1)	1540-1 ³ / ₈ 457 (500-1 ³ / ₈)	NA
CIRCLING	1640-1	557 (600-1)	1820-2 737 (800-2)	NA



NC-1, 22 FEB 2024 to 21 MAR 2024

NC-1, 22 FEB 2024 to 21 MAR 2024