

(HLNDS.BUKHD3) 20366

AL-469 (FAA)

# BUKHD THREE ARRIVAL (RNAV)

ATLANTA, GEORGIA

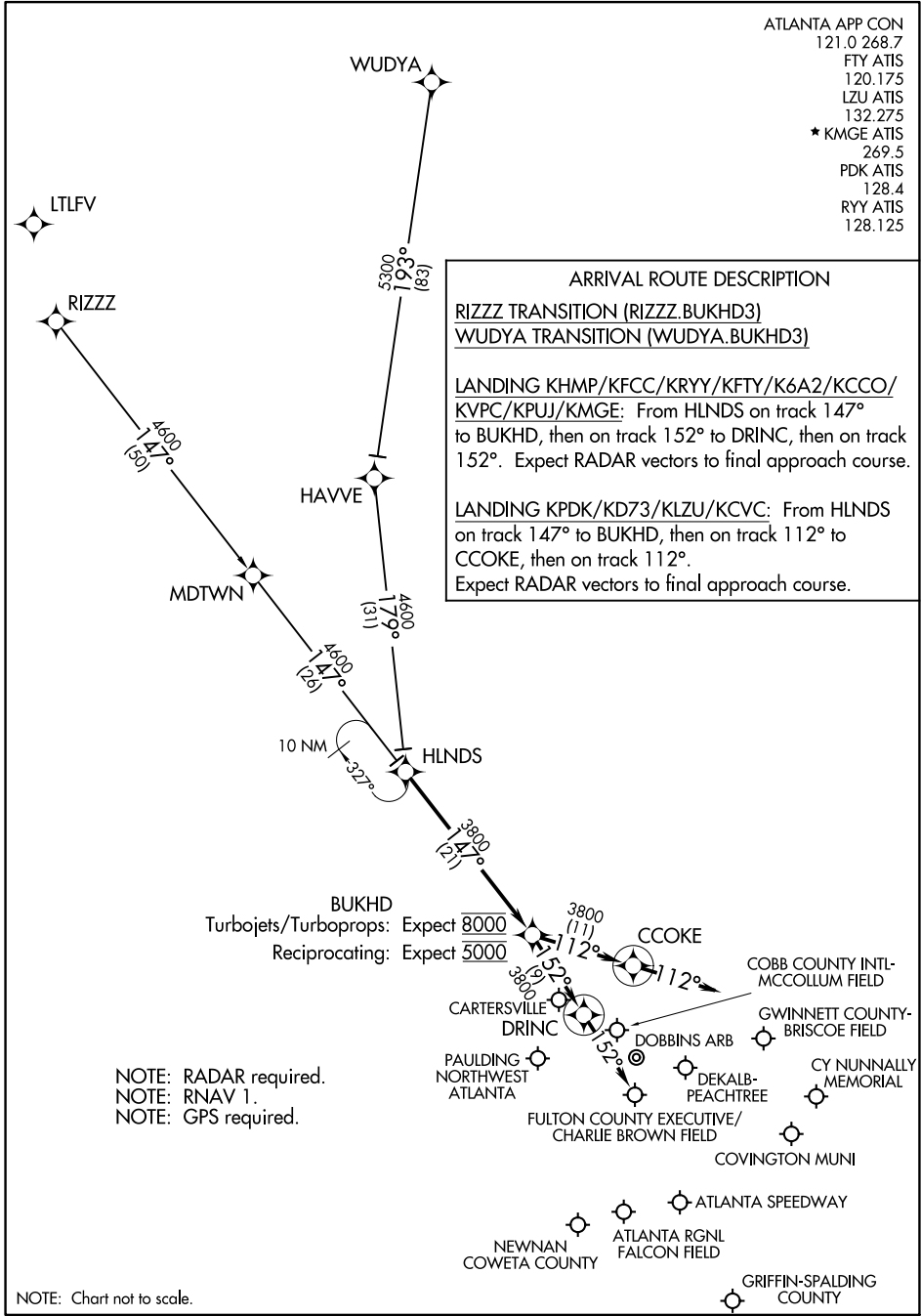
ATLANTA APP CON  
 121.0 268.7  
 FTY ATIS  
 120.175  
 LZU ATIS  
 132.275  
 ★ KMGE ATIS  
 269.5  
 PDK ATIS  
 128.4  
 RYY ATIS  
 128.125

**ARRIVAL ROUTE DESCRIPTION**

RIZZZ TRANSITION (RIZZZ.BUKHD3)  
WUDYA TRANSITION (WUDYA.BUKHD3)

LANDING KHMP/KFCC/KRYY/KFTY/K6A2/KCCO/  
 KVPC/KPUJ/KMGE: From HLNDS on track 147°  
 to BUKHD, then on track 152° to DRINC, then on track  
 152°. Expect RADAR vectors to final approach course.

LANDING KPDK/KD73/KLZU/KCVC: From HLNDS  
 on track 147° to BUKHD, then on track 112° to  
 CCOKE, then on track 112°.  
 Expect RADAR vectors to final approach course.



SE-4, 20 MAY 2021 to 17 JUN 2021

SE-4, 20 MAY 2021 to 17 JUN 2021

NOTE: RADAR required.  
 NOTE: RNAV 1.  
 NOTE: GPS required.

NOTE: Chart not to scale.

# BUKHD THREE ARRIVAL (RNAV)

(HLNDS.BUKHD3) 16JUL20

ATLANTA, GEORGIA

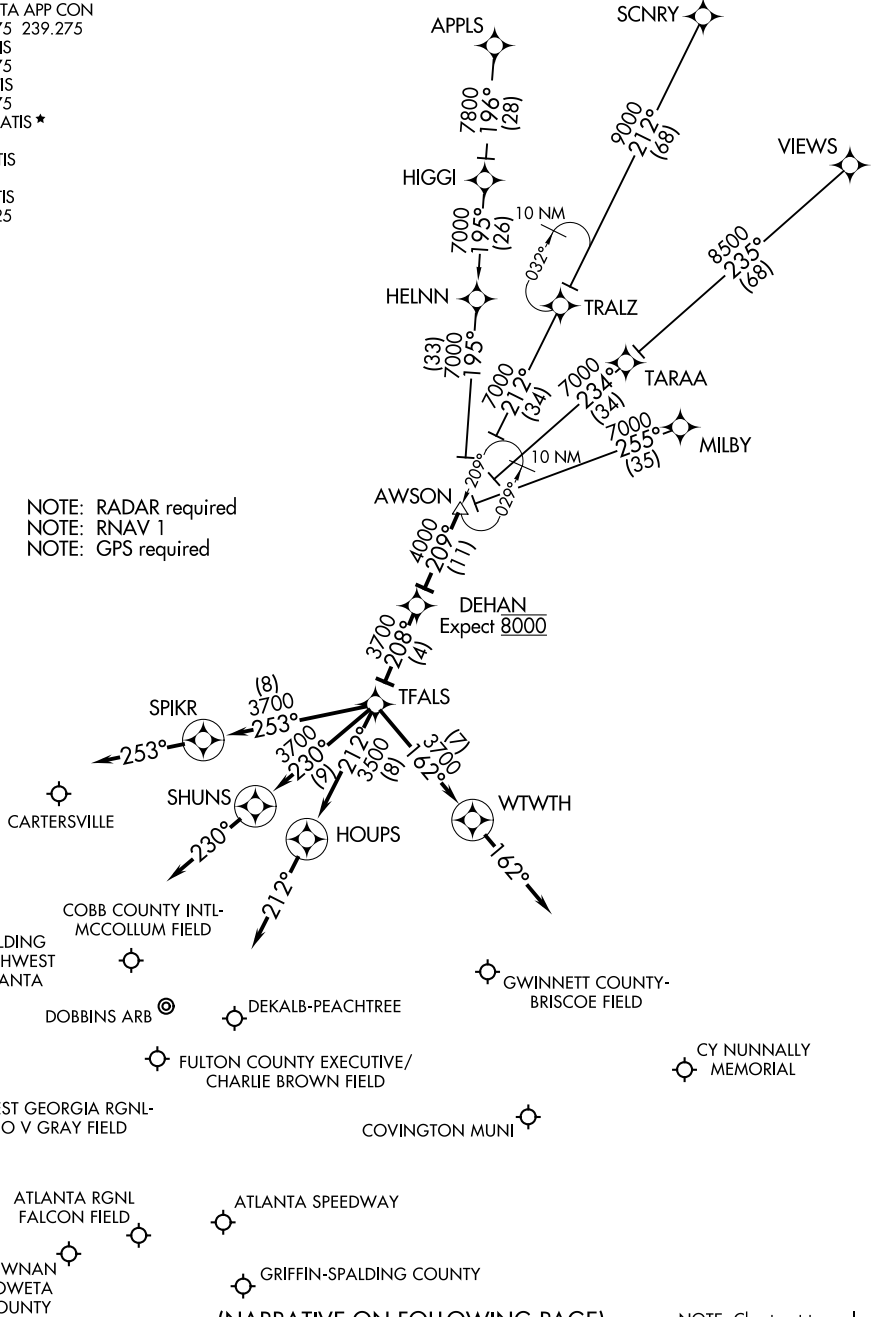
(AWSON.DEHAN3) 20366

# DEHAN THREE ARRIVAL (RNAV) AL-469 (FAA)

ATLANTA, GEORGIA

ATLANTA APP CON  
 126.975 239.275  
 FTY ATIS  
 120.175  
 LZU ATIS  
 132.275  
 KMGE ATIS ★  
 269.5  
 PDK ATIS  
 128.4  
 RYY ATIS  
 128.125

NOTE: RADAR required  
 NOTE: RNAV 1  
 NOTE: GPS required



(NARRATIVE ON FOLLOWING PAGE)

NOTE: Chart not to scale.

# DEHAN THREE ARRIVAL (RNAV)

(AWSON.DEHAN3) 16JUL20

ATLANTA, GEORGIA

SE-4, 20 MAY 2021 to 17 JUN 2021

SE-4, 20 MAY 2021 to 17 JUN 2021

ARRIVAL ROUTE DESCRIPTION

- APPLS TRANSITION (APPLS.DEHAN3)
- MILBY TRANSITION (MILBY.DEHAN3)
- SCNRY TRANSITION (SCNRY.DEHAN3)
- VIEWS TRANSITION (VIEWS.DEHAN3)

LANDING KHMP/KD73/KLZU/K6A2/KCVC: From AWSON on track 209° to DEHAN, then on track 208° to TFALS, then on track 162° to WTWTH, then on track 162°. Expect RADAR vectors to final approach course.

LANDING KPDK/KFFC/KCCO: From AWSON on track 209° to DEHAN, then on track 208° to TFALS, then on track 212° to HOUPS, then on track 212°. Expect RADAR vectors to final approach course.

LANDING KRYV/KVPC/KPUJ/KCTJ: From AWSON on track 209° to DEHAN, then on track 208° to TFALS, then on track 253° to SPIKR, then on track 253°. Expect RADAR vectors to final approach course.

LANDING KFTY/KMGE: From AWSON on track 209° to DEHAN, then on track 208° to TFALS, then on track 230° to SHUNS, then on track 230°. Expect RADAR vectors to final approach course.

SE-4, 20 MAY 2021 to 17 JUN 2021

SE-4, 20 MAY 2021 to 17 JUN 2021

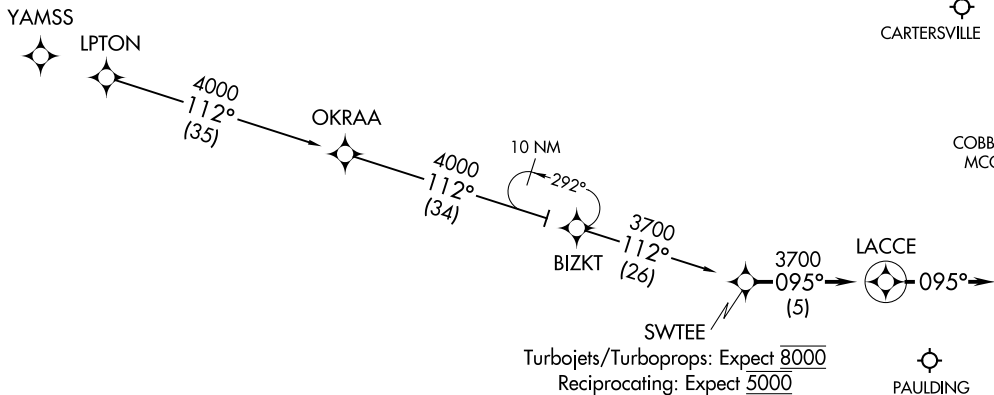
SWTTEE TWO ARRIVAL (RNAV)  
(SWTTEE, SWTTEE2) 21MAY20

ATLANTA APP CON  
126.975 257.9  
FTY ATIS  
120.175  
LZU ATIS  
132.275  
KMGE ATIS\*  
269.5  
PDK ATIS  
128.4  
RYY ATIS  
128.125

(SWTTEE, SWTTEE2) 20366  
SWTTEE TWO ARRIVAL (RNAV)

AL-469 (FAA)

ATLANTA, GEORGIA



NOTE: RADAR required.  
NOTE: RNAV 1.  
NOTE: GPS required.

ARRIVAL ROUTE DESCRIPTION

BIZKT TRANSITION (BIZKT.SWTTEE2)  
LPTON TRANSITION (LPTON.SWTTEE2)

From SWTEE on track 095° to LACCE, then on track 095°.  
Expect RADAR vectors to final approach course.



NOTE: Chart not to scale.

ATLANTA, GEORGIA

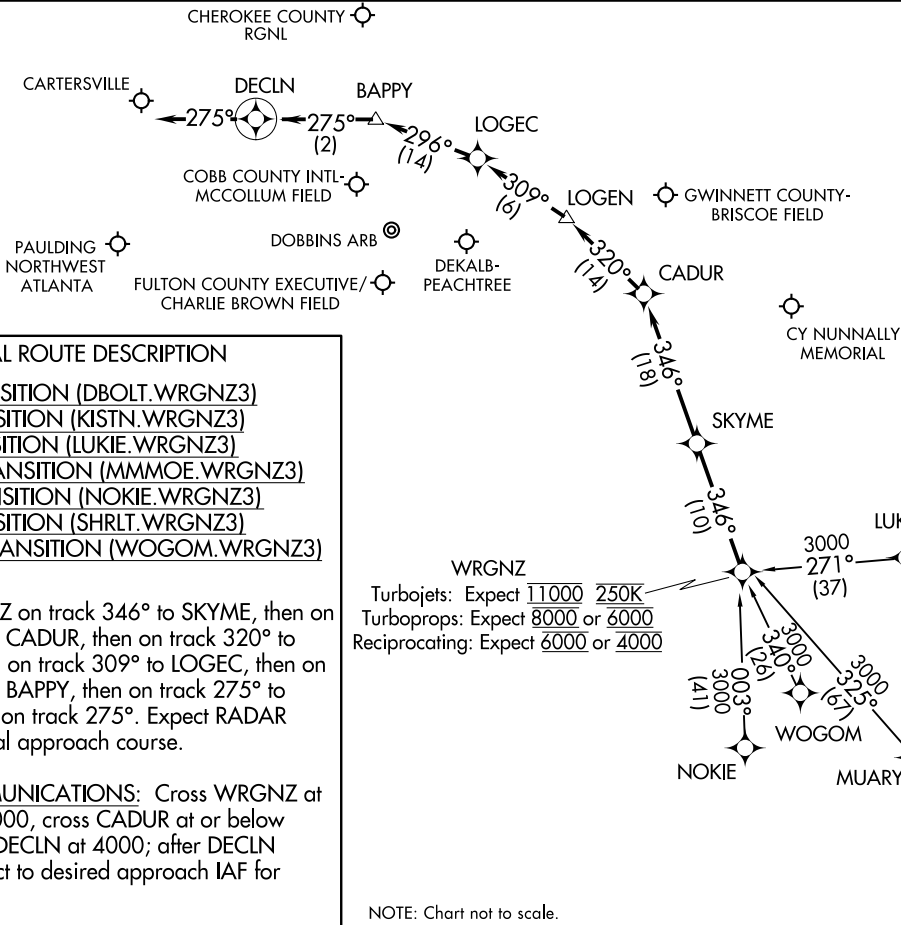
WRGNZ THREE ARRIVAL (RNAV)  
(WRGNZ.WRGNZ3) 16JUL20

(WRGNZ.WRGNZ3) 20366  
WRGNZ THREE ARRIVAL (RNAV)

AL-469 (FAA)

ATLANTA APP CON  
128.575 343.675  
FTY ATIS  
120.175  
LZU ATIS  
132.275  
\*KMGE ATIS  
269.5  
PDK ATIS  
128.4  
RYY ATIS  
128.125

NOTE: RADAR required  
NOTE: RNAV 1  
NOTE: GPS required



ARRIVAL ROUTE DESCRIPTION

- DBOLT TRANSITION (DBOLT.WRGNZ3)
- KISTN TRANSITION (KISTN.WRGNZ3)
- LUKIE TRANSITION (LUKIE.WRGNZ3)
- MMMOE TRANSITION (MMMOE.WRGNZ3)
- NOKIE TRANSITION (NOKIE.WRGNZ3)
- SHRLT TRANSITION (SHRLT.WRGNZ3)
- WOGOM TRANSITION (WOGOM.WRGNZ3)

From WRGNZ on track 346° to SKYME, then on track 346° to CADUR, then on track 320° to LOGEN, then on track 309° to LOGEC, then on track 296° to BAPPY, then on track 275° to DECLN, then on track 275°. Expect RADAR vectors to final approach course.

LOST COMMUNICATIONS: Cross WRGNZ at or below 11000, cross CADUR at or below 7000, cross DECLN at 4000; after DECLN proceed direct to desired approach IAF for filed airport.

WRGNZ  
Turbojets: Expect 11000 250K  
Turboprops: Expect 8000 or 6000  
Reciprocating: Expect 6000 or 4000

NOTE: Chart not to scale.

ATLANTA, GEORGIA

ATLANTA, GEORGIA