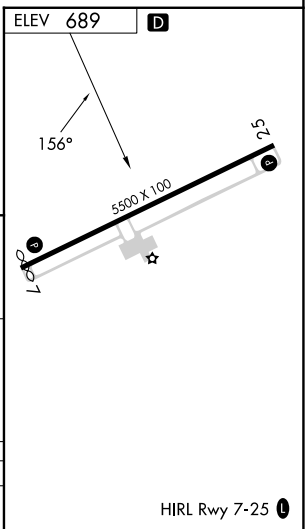
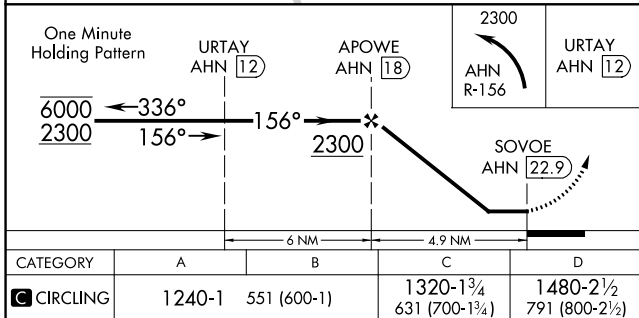
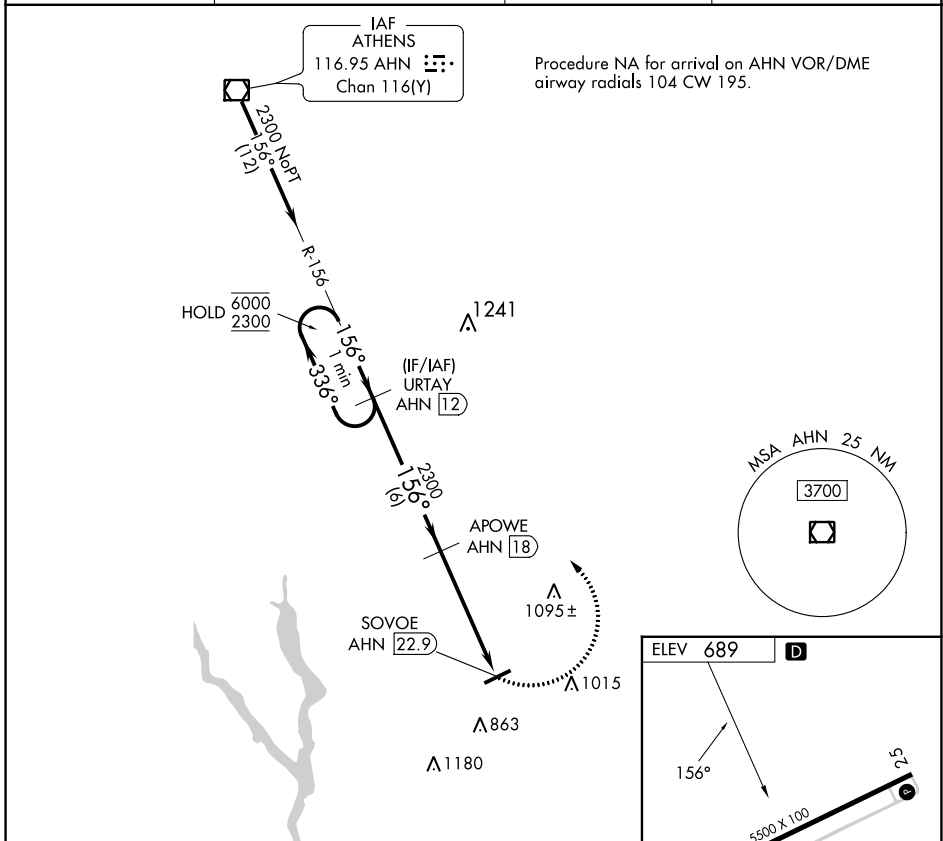


VOR/DME AHN <b>116.95</b> Chan <b>116 (Y)</b>	APP CRS <b>156°</b>	Rwy Idg TDZE Apt Elev <b>689</b>	<b>N/A</b> <b>N/A</b> <b>689</b>
---	------------------------	---	--

**VOR-B**  
GREENE COUNTY RGNL (CPP)

DME Required.		MISSED APPROACH: Climbing left turn to 2300 on AHN VOR/DME R-156 to URTAY/AHN 12 DME and hold.	
AWOS-3 <b>124.525</b>	ATLANTA APP CON ★ <b>132.475 291.1</b>	GCO <b>121.725</b>	UNICOM <b>122.8 (CTAF) ①</b>



CATEGORY	A	B	C	D
① CIRCLING	1240-1	551 (600-1)	1320-1¾ 631 (700-1¾)	1480-2½ 791 (800-2½)

HIRL Rwy 7-25 ①

SE-4, 22 FEB 2024 to 21 MAR 2024

SE-4, 22 FEB 2024 to 21 MAR 2024