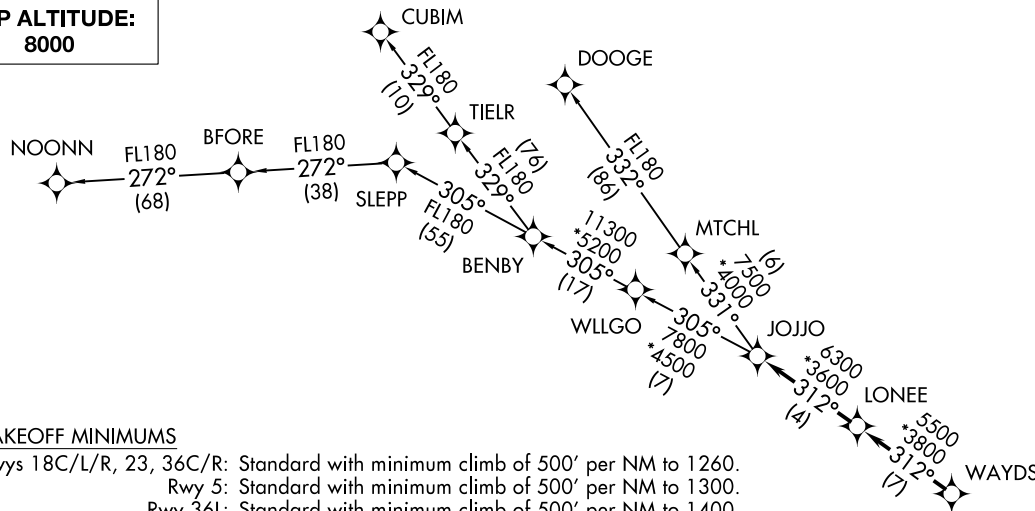


JOJO FOUR DEPARTURE (RNAV)

CHARLOTTE/DOUGLAS INTL (CLT)
CHARLOTTE, NORTH CAROLINA

D-ATIS DEP 132.1
CLNC DEL
127.15 348.6
CPDLC
GND CON
121.8 348.6 (WEST)
121.9 348.6 (EAST)
CHARLOTTE TOWER
118.1 257.8 (Rwys 18L-36R)
126.4 257.8 (Rwy 18C-36C)
133.35 257.8 (Rwy 18R-36L)
CHARLOTTE DEP CON
120.5 257.2



TAKEOFF MINIMUMS

Rwys 18C/L/R, 23, 36C/R: Standard with minimum climb of 500' per NM to 1260.
Rwy 5: Standard with minimum climb of 500' per NM to 1300.
Rwy 36L: Standard with minimum climb of 500' per NM to 1400.

- NOTE: For turbojets only.
NOTE: DME/DME/IRU or GPS required.
NOTE: RNAV 1.
NOTE: RADAR required.
NOTE: If unable to accept climb rates, advise ATC on initial contact.
NOTE: Accelerate to 250K, if unable advise ATC. Upon reaching 10000 MSL, accelerate to and maintain 280K, if unable advise ATC.
NOTE: NOONN TRANSITION ATC assigned only.

NOTE: Chart not to scale.

(NARRATIVE ON FOLLOWING PAGE)



DEPARTURE ROUTE DESCRIPTION

SEE ADDITIONAL REQUIREMENTS ON AAUP

TAKEOFF RWY 5: Climb heading 055° to 1260, then on heading 055° or as assigned by ATC, expect RADAR vectors to WAYDS, thence. . . .

TAKEOFF RWYS 18C/L: Climb heading 183° to 1260, then on heading 183° or as assigned by ATC, expect RADAR vectors to WAYDS, thence. . . .

TAKEOFF RWY 18R: Climb heading 183° to 1260, then on heading 200° or as assigned by ATC, expect RADAR vectors to WAYDS, thence. . . .

TAKEOFF RWY 23: Climb heading 235° to 1260, then on heading 235° or as assigned by ATC, expect RADAR vectors to WAYDS, thence. . . .

TAKEOFF RWY 36C: Climb heading 003° to 1260, then on heading 330° or as assigned by ATC, expect RADAR vectors to WAYDS, thence. . . .

TAKEOFF RWY 36L: Climb heading 003° to 1260, then on heading 315° or as assigned by ATC, expect RADAR vectors to WAYDS, thence. . . .

TAKEOFF RWY 36R: Climb heading 003° to 1260, then on heading 025° or as assigned by ATC, expect RADAR vectors to WAYDS, thence. . . .

. . . on depicted route to JOJJO, then on assigned transition. Maintain 8000.
Expect clearance to filed altitude within 10 minutes after departure.

CUBIM TRANSITION (JOJJO4.CUBIM)
DOOGE TRANSITION (JOJJO4.DOOGE)
NOONN TRANSITION (JOJJO4.NOONN)

SE-2, 22 FEB 2024 to 21 MAR 2024

SE-2, 22 FEB 2024 to 21 MAR 2024