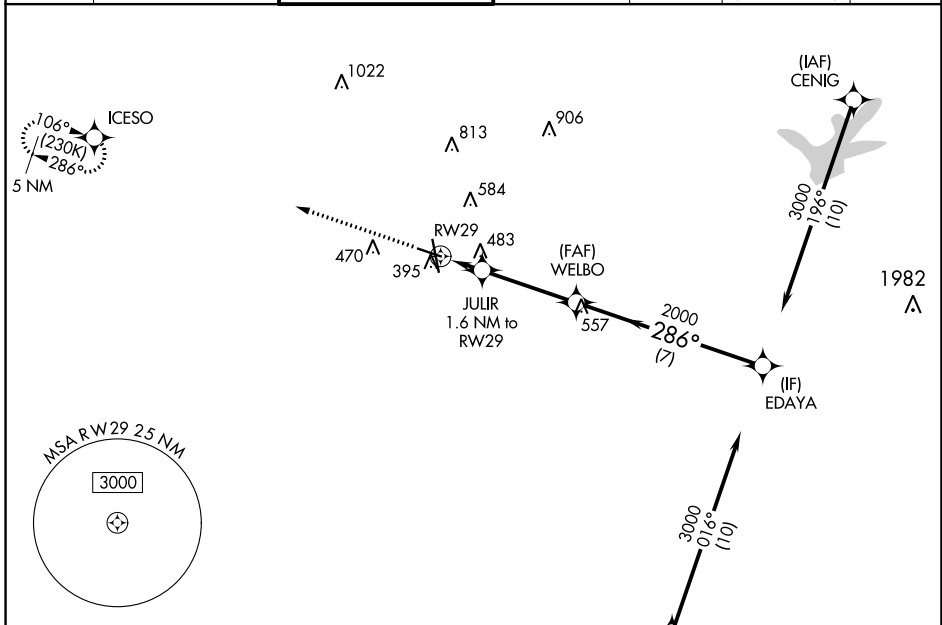


WAAS CH <b>87022</b> <b>W29A</b>	APP CRS <b>286°</b>	Rwy Idg TDZE Apt Elev	<b>5158</b> <b>314</b> <b>321</b>
--	------------------------	-----------------------------	---

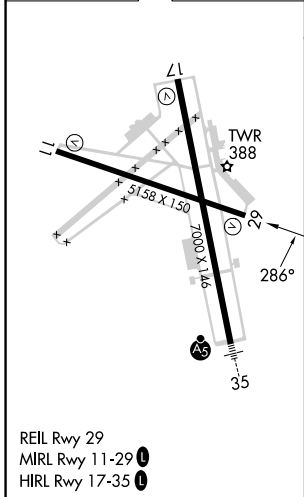
# RNAV (GPS) RWY 29

EASTERWOOD FLD (CLL)

RNP APCH.		MISSED APPROACH: Climb to 2000 direct ICESO and hold.						
Baro-VNAV NA when using Caldwell altimeter setting. For uncompensated Baro-VNAV systems, LNAV/VNAV NA below -3°C or above 54°C. Rwy 29 helicopter visibility reduction below 3/4 SM NA.		ATIS <b>126.85</b>	HOUSTON APP CON <b>134.3 360.85</b>	EASTERWOOD TOWER ★ <b>118.5 (CTAF) 0 284.7</b>	GND CON <b>128.7 284.7</b>	CLNC DEL <b>128.7</b>	CLNC DEL <b>120.4</b> (when twr closed)	UNICOM <b>122.95</b>



ELEV 321	<b>D</b>	TDZE 314
----------	----------	----------



2000	↑	ICESO	✧			
*LNAV only.						
		RW29	JULIR 1.6 NM to RW29	WELBO 2000	EDAYA 3000	GP 3.00° TCH 54
		860*		2000	286°	
		1.6 NM	3.5 NM	7 NM		
CATEGORY	A	B	C	D	E	
LPV DA	564-3/4		250 (300-3/4)			
LNAV/VNAV DA	762-1 3/8		448 (500-1 3/8)			
LNAV MDA	740-1	426 (500-1)	740-1 1/4	426 (500-1 1/4)		
<b>C</b> CIRCLING	860-1 539 (600-1)	880-1 559 (600-1)	1000-2 679 (700-2)	1180-2 3/4 859 (900-2 3/4)	1180-3 859 (900-3)	

SC-5, 22 FEB 2024 to 21 MAR 2024

SC-5, 22 FEB 2024 to 21 MAR 2024