

A diagram showing a cross-section of a beam. A vertical axis is labeled 'Z' with an upward-pointing arrow. A horizontal axis is labeled 'Y' with a rightward-pointing arrow. The beam's cross-section is represented by a rectangle with a horizontal line through its center, indicating the neutral axis.

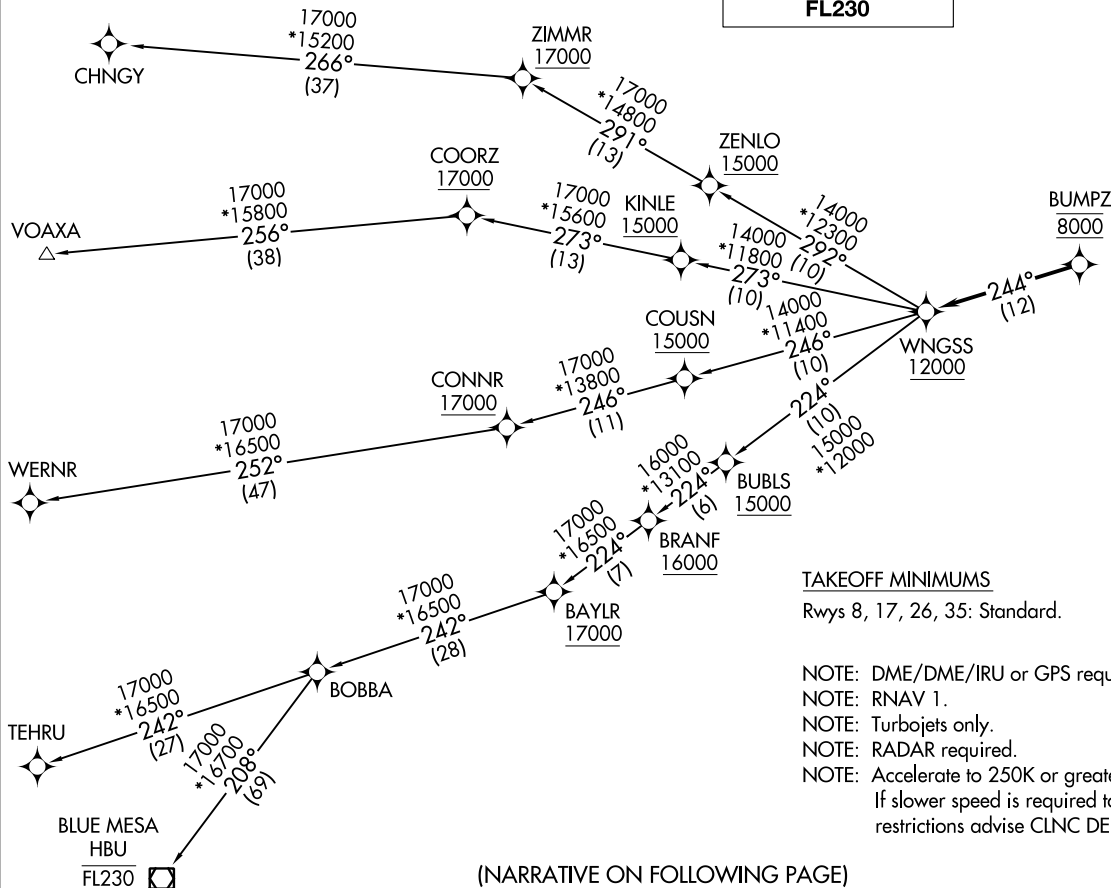
NOTE: DME/DME/IRU or GPS required.
NOTE: RNAV 1.
NOTE: Turbojets only.
NOTE: RADAR required.
NOTE: Accelerate to 250K or greater upon reaching 10000.
If slower speed is required to meet crossing restrictions advise CLNC DEL prior to taxi.

NOTE: Chart not to scale.

(NARRATIVE ON FOLLOWING PAGE)

SW-1, 22 FEB 2024 to 21 MAR 2024

SW-1, 22 FEB 2024 to 21 MAR 2024

DENVER, COLORADO
COLORADO AIR AND SPACE PORT (CFO)



DEPARTURE ROUTE DESCRIPTION

TAKEOFF RUNWAY 8: Climb on a heading between 312° CW 228° as assigned by ATC. Thence. . . .

TAKEOFF RUNWAY 17: Climb on a heading between 352° CW 229° as assigned by ATC. Thence. . . .

TAKEOFF RUNWAY 26: Climb on a heading between 315° CW 083° as assigned by ATC. Thence. . . .

TAKEOFF RUNWAY 35: Climb on a heading between 313° CW 172° as assigned by ATC. Thence. . . .

. . . .expect RADAR vectors to cross BUMPZ at 8000 then on track 244° to cross WNGSS at or above 12000 then on (transition) maintain FL230 or filed lower altitude. Expect higher filed altitude ten minutes after departure.

- BLUE MESA TRANSITION (WNGSS1.HBU)
- CHNGY TRANSITION (WNGSS1.CHNGY)
- TEHRU TRANSITION (WNGSS1.TEHRU)
- VOAXA TRANSITION (WNGSS1.VOAXA)
- WERNR TRANSITION (WNGSS1.WERNR)

SW-1, 22 FEB 2024 to 21 MAR 2024

SW-1, 22 FEB 2024 to 21 MAR 2024