

WAAS CH 62912 W10A	APP CRS 101°	Rwy Idg TDZE Apt Elev	4001 928 928
--	------------------------	-----------------------------	---

RNAV (GPS) RWY 10

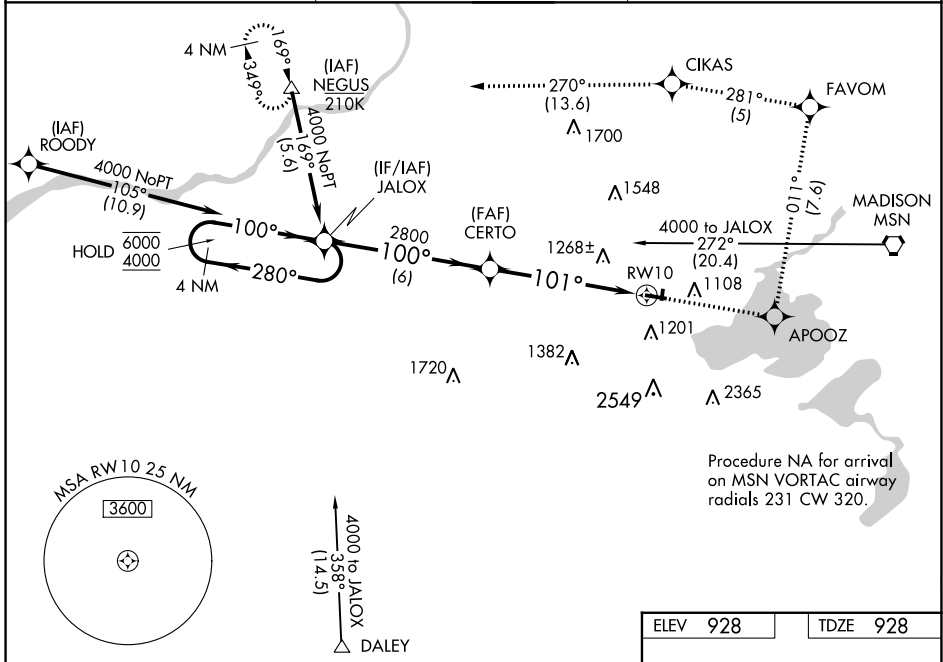
MIDDLETON MUNI/MOREY FLD (C29)

RNP APCH.

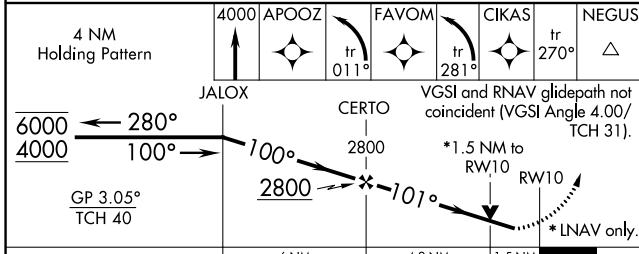
⚠ Circling NA to Rws 1 and 19. Helicopter visibility reduction below 3/4 SM NA.
⚠ For uncompensated Baro-VNAV systems, LNAV/VNAV NA below -16°C or above 54°C.

MISSED APPROACH: (Do not exceed 185K until APOOZ) Climb to 4000 direct APOOZ then climbing left turn on track 011° to FAVOM then climbing left turn on track 281° to CIKAS and track 270° to NEGUS and hold.

AWOS-3 118.675	MADISON APP CON * 135.45 343.7	UNICOM 123.0 (CTAF) 0
--------------------------	--	---------------------------------



Procedure NA for arrival on MSN VORTAC airway radials 231 CW 320.



ELEV 928	TDZE 928
MIRL Rwy 10-28 0	
REIL Rws 10 and 28 0	

EC-3, 22 FEB 2024 to 21 MAR 2024

EC-3, 22 FEB 2024 to 21 MAR 2024