

WAAS CH 90440 W13A	APP CRS 134°	Rwy Idg TDZE Apt Elev	4148 669 674
--	------------------------	-----------------------------	---

RNAV (GPS) RWY 13

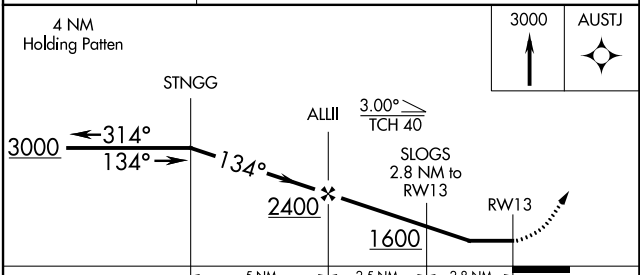
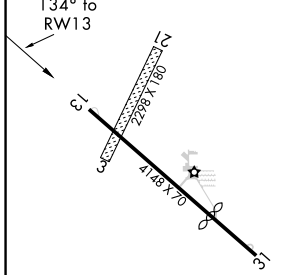
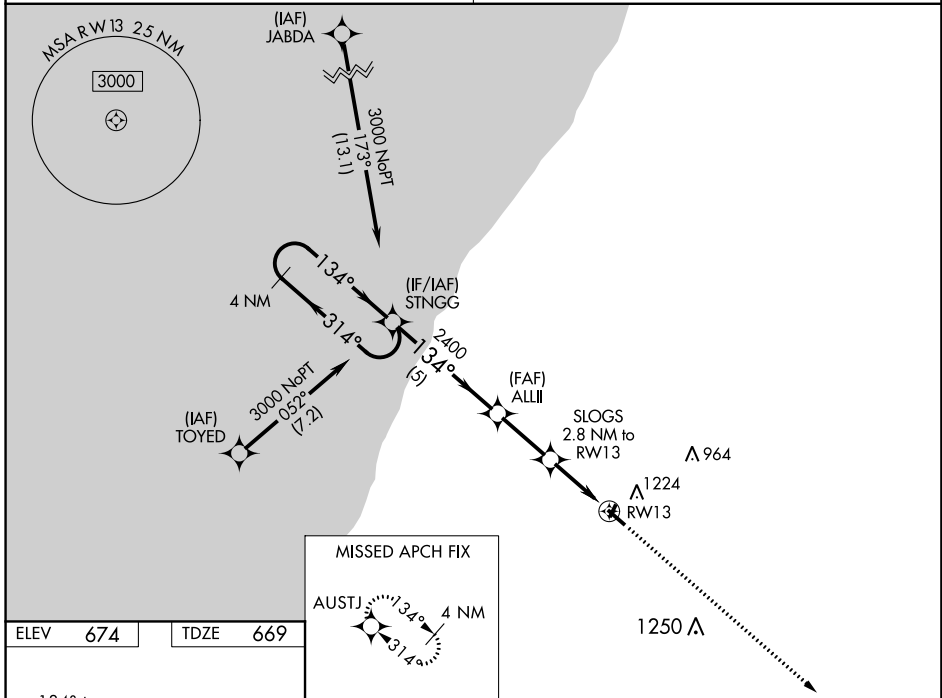
ANDREWS UNIVERSITY AIRPARK (C20)

⚠ Rwy 13 helicopter visibility reduction below 1 SM NA. DME/DME RNP-0.3 NA. Procedure NA at night. Use Benton Harbor altimeter setting; when not received, use South Bend Int altimeter setting and increase all MDA 40 feet. Increase LP and LNAV Cats C/D visibility ½ SM and Circling Cats B/C ¼ SM.

⚠ NA MISSED APPROACH: Climb to 3000 direct AUSTJ and hold.

SOUTH BEND APP CON * **118.55 257.8**

UNICOM **122.7 (CTAF) 0**



CATEGORY	A	B	C	D
LP MDA	1100-1	431 (500-1)	1100-1¼	431 (500-1¼)
LNAV MDA	1280-1	611 (700-1)	1280-1¾	611 (700-1¾)
C CIRCLING	1620-1¼	946 (1000-1¼)	1620-2¾ 946 (1000-2¾)	1620-3 946 (1000-3)

EC-1, 26 MAR 2020 to 23 APR 2020

EC-1, 26 MAR 2020 to 23 APR 2020

WAAS CH 42840 W31A	APP CRS 314°	Rwy Idg TDZE Apt Elev	3019 669 674
---------------------------------	------------------------	-----------------------------	---

RNAV (GPS) RWY 31

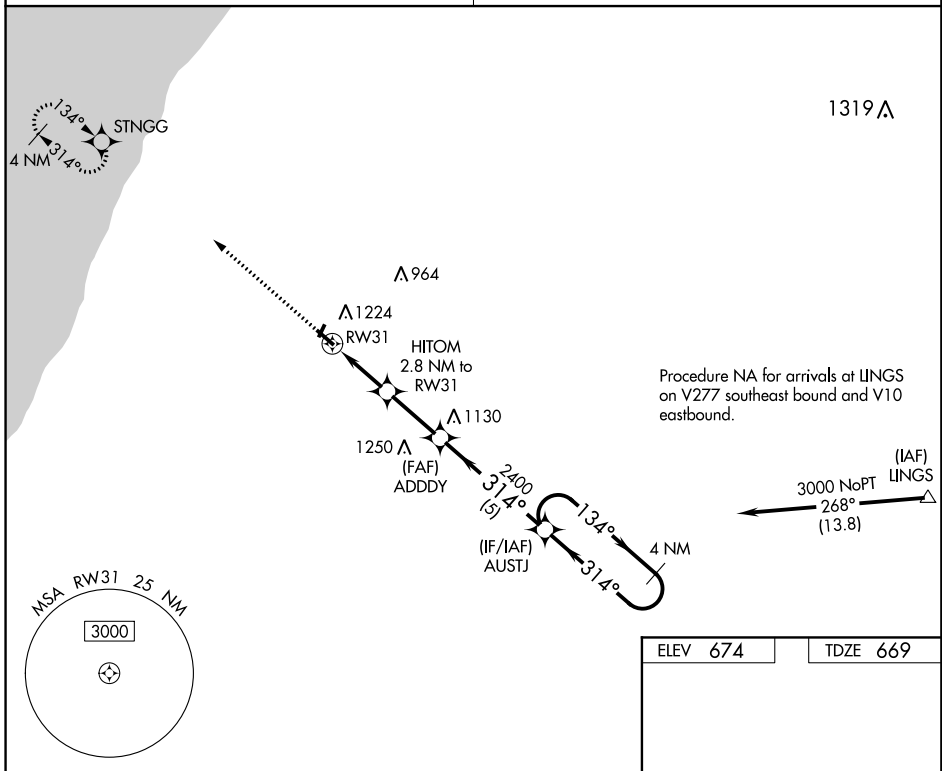
ANDREWS UNIVERSITY AIRPARK (C20)

⚠ Rwy 31 helicopter visibility reduction below 1 SM NA. DME/DME RNP-0.3 NA. Procedure NA at night. Use Benton Harbor altimeter setting; when not received, use South Bend Intl altimeter setting and increase all MDA 40 feet. Increase LP and LNAV Cats C/D visibility 1/8 SM and Circling Cats B/C 1/4 SM.

MISSED APPROACH:
Climb to 3000 direct STNGG and hold.

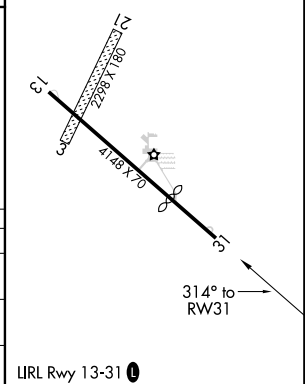
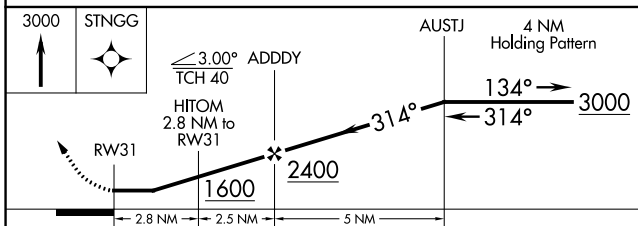
SOUTH BEND APP CON ★
118.55 257.8

UNICOM
122.7 (CTAF) 0



Procedure NA for arrivals at LINGS on V277 southeast bound and V10 eastbound.

ELEV 674	TDZE 669
----------	----------



CATEGORY	A	B	C	D
LP MDA	1100-1 431 (500-1)		1100-1¼ 431 (500-1¼)	
LNAV MDA	1160-1 491 (500-1)		1160-1¾ 491 (500-1¾)	
C CIRCLING	1620-1¼ 946 (1000-1¼)		1620-2¾ 946 (1000-2¾)	1620-3 946 (1000-3)

URL Rwy 13-31 0

EC-1, 26 MAR 2020 to 23 APR 2020

EC-1, 26 MAR 2020 to 23 APR 2020