

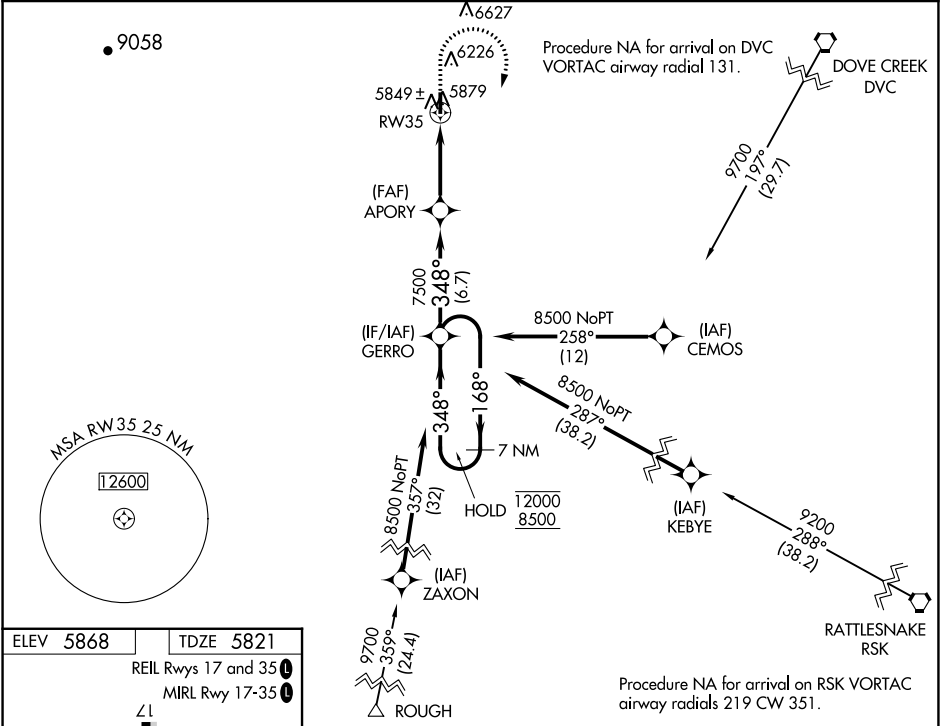
WAAS CH 63024 W35A	APP CRS 348°	Rwy Idg TDZE Apt Elev	5781 5821 5868
----------------------------------------	------------------------	-----------------------------	-------------------------------------------

RNAV (GPS) RWY 35

BLANDING MUNI (BDG)

RNP APCH.	MISSED APPROACH: (Do not exceed 165K until GERRO) Climb to 6300 then climbing right turn to 8500 direct GERRO and hold.
<p>▼ For uncompensated Baro-VNAV systems, LNAV/VNAV NA below -26°C or above 54°C.</p> <p>▲</p>	

AWOS-3PT 127.75	DENVER CENTER 127.55 354.05	UNICOM 122.8 (CTAF) 0
---------------------------	---------------------------------------	---------------------------------



ELEV 5868 TDZE 5821

REIL Rwy 17 and 35

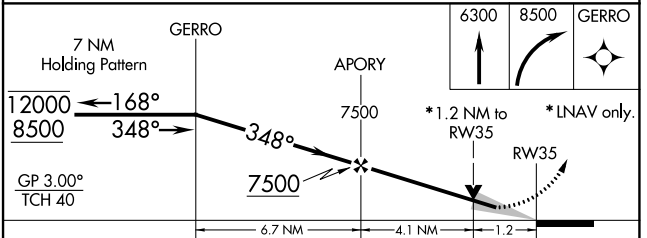
MIRL Rwy 17-35

35

1.6% UP

5781 X.75

348°



CATEGORY	A	B	C	D
LPV DA	6071-1	250 (300-1)		NA
LNAV/VNAV DA	6077-1	256 (300-1)		NA
LNAV MDA	6200-1	379 (400-1)	6200-1 1/4 379 (400-1 1/4)	NA
CIRCLING	6440-1 572 (600-1)	6540-1 672 (700-1)	6760-2 3/4 892 (900-2 3/4)	NA

SW-4, 22 FEB 2024 to 21 MAR 2024

SW-4, 22 FEB 2024 to 21 MAR 2024