

WAAS CH <b>49034</b> <b>W17A</b>	APP CRS <b>171°</b>	Rwy Idg TDZE Apt Elev	<b>4996</b> <b>782</b> <b>782</b>
--	------------------------	-----------------------------	---

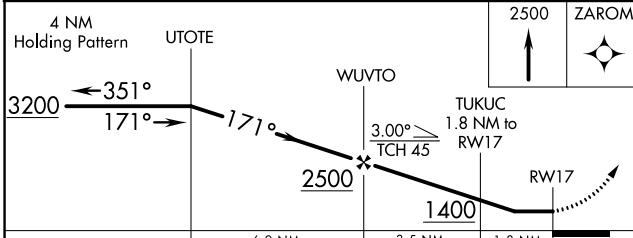
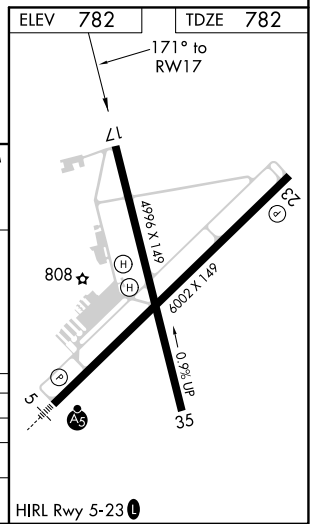
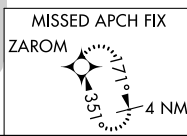
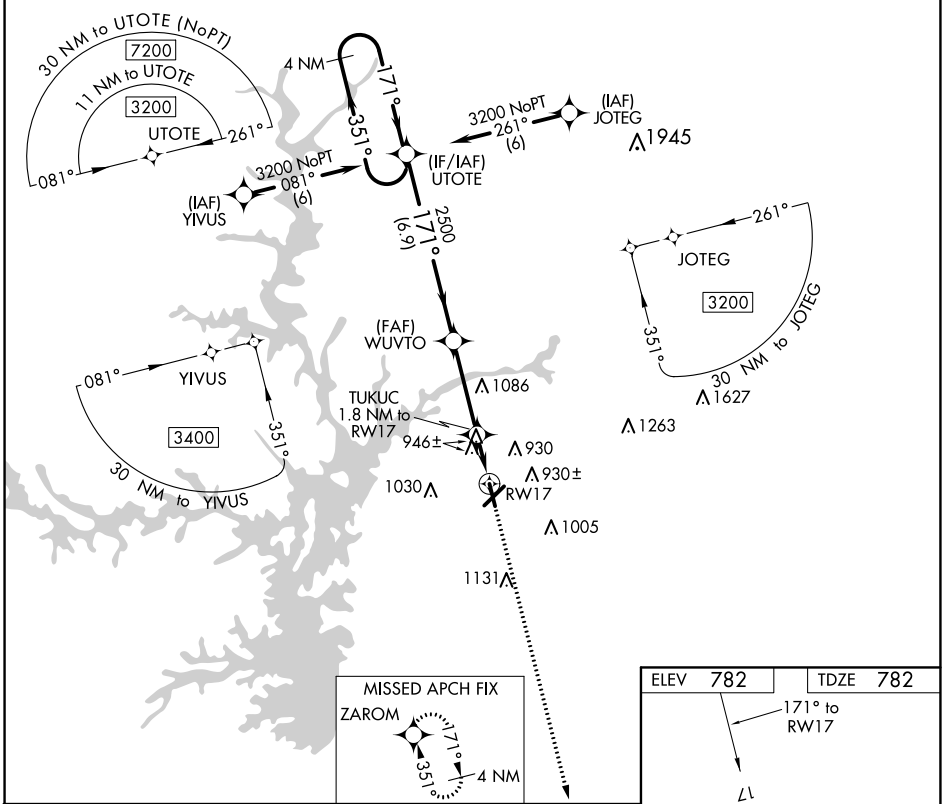
# RNAV (GPS) RWY 17

ANDERSON RGNL (A.ND)

**⚠** DME/DME RNP-0.3 NA. When local altimeter setting not received, use Clemson altimeter setting and increase all MDA 60 feet and increase LP, LNAV and Circling Cats C/D visibility 1/4 mile.  
**⚠** Straight-in Rwy 17 NA at night, Circling Rwy 17, 35 NA at night. 17, 35 helicopter visibility reduction below 1 SM NA.

MISSED APPROACH: Climb to 2500 direct ZAROM and hold.

ASOS <b>120.675</b>	GREER APP CON ★ <b>118.8 270.275</b>	CTAF <b>123.60</b>
------------------------	---	-----------------------



CATEGORY	A	B	C	D
LP MDA	1200-1	418 (500-1)	1200-1 1/8	418 (500-1 1/8)
LNAV MDA	1220-1	438 (500-1)	1220-1 1/4	438 (500-1 1/4)
<b>C</b> CIRCLING	1260-1 478 (500-1)	1320-1 538 (600-1)	1440-1 3/4 658 (700-1 3/4)	1500-2 1/4 718 (800-2 1/4)

SE-2, 22 FEB 2024 to 21 MAR 2024

SE-2, 22 FEB 2024 to 21 MAR 2024