

WAAS CH <b>58028</b> <b>W27A</b>	APP CRS <b>275°</b>	Rwy Idg TDZE Apt Elev	<b>5004</b> <b>753</b> <b>754</b>
--	------------------------	-----------------------------	---

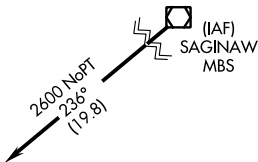
# RNAV (GPS) RWY 27

GRATIOT COMMUNITY (AMN)

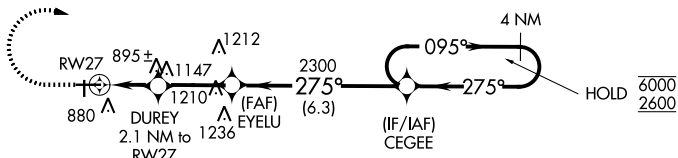
RNP APCH.	MISSED APPROACH: Climb to 1900 then climbing right turn 2600 direct CEGEE and hold.
<p>▼ For uncompensated Baro-VNAV systems, LNAV/VNAV NA below -16°C or above 54°C.</p> <p>▲</p>	

AWOS-3P <b>124.175</b>	GREAT LAKES APP CON ★ <b>126.45 235.625</b>	CLNC DEL <b>119.25</b>	UNICOM <b>122.8 (CTAF)</b>
---------------------------	--	---------------------------	-------------------------------

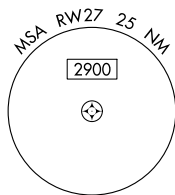
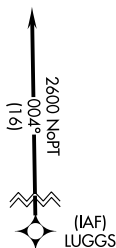
Procedure NA for arrival on MBS  
VOR/DME airway radials 238 CW 320.



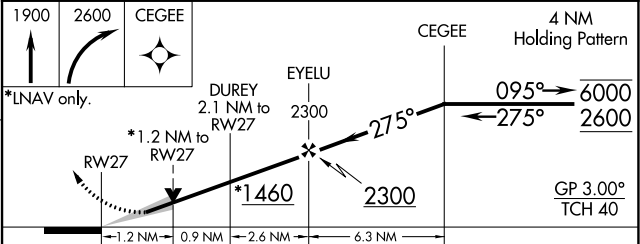
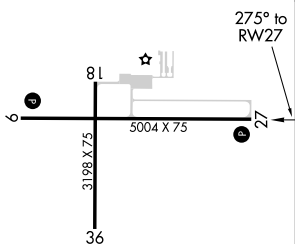
▲ 1270



▲ 1850



ELEV 754	TDZE 753
----------	----------



CATEGORY	A	B	C	D
LPV DA		1003-1	250 (300-1)	
LNAV/VNAV DA		1036-1	283 (300-1)	
LNAV MDA	1160-1	407 (500-1)	1160-1 1/8	407 (500-1 1/8)

REIL Rwy 9 and 27  
MIRL Rwy 9-27 and 18-36

EC-1, 22 FEB 2024 to 21 MAR 2024

EC-1, 22 FEB 2024 to 21 MAR 2024