

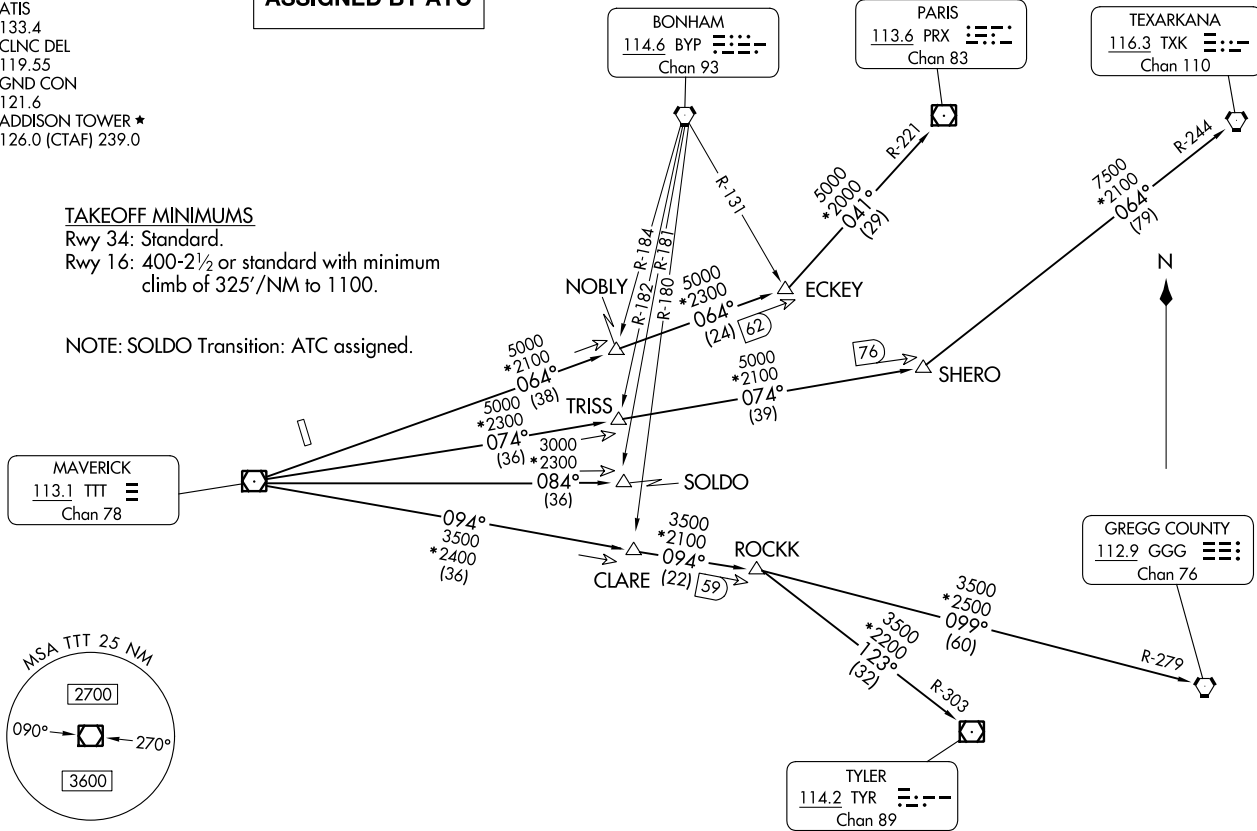
GARLAND FIVE DEPARTURE  
(GARLS.TT) 251ANZ4

DALLAS, TEXAS  
ADDISON (ADS)

REGIONAL DEP CON  
124.3 282.275  
ATIS  
133.4  
CLNC DEL  
119.55  
GND CON  
121.6  
ADDISON TOWER ★  
126.0 (CTAF) 239.0

**TOP ALTITUDE:  
ASSIGNED BY ATC**

**RADAR and DME required.**



**TAKEOFF MINIMUMS**

Rwy 34: Standard.

Rwy 16: 400-2½ or standard with minimum climb of 325'/NM to 1100.

NOTE: SOLDO Transition: ATC assigned.

MAVERICK  
113.1 TTT  
Chan 78

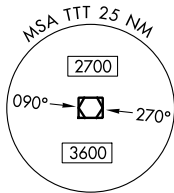
BONHAM  
114.6 BYP  
Chan 93

PARIS  
113.6 PRX  
Chan 83

TEXARKANA  
116.3 TXK  
Chan 110

GREGG COUNTY  
112.9 GGG  
Chan 76

TYLER  
114.2 TYR  
Chan 89



NOTE: Chart not to scale.

(CONTINUED ON FOLLOWING PAGE)

(GARLS.TT) 24053  
GARLAND FIVE DEPARTURE

AL-768 (FAA)

ADDISON (ADS)  
DALLAS, TEXAS

# GARLAND FIVE DEPARTURE

DALLAS, TEXAS



## DEPARTURE ROUTE DESCRIPTION

When entering controlled airspace, fly assigned heading for RADAR vectors to appropriate route. Maintain ATC assigned altitude.

GREGG COUNTY TRANSITION (GARL5.GGG): From over TTT VOR/DME on TTT R-094 to ROCKK, then on GGG R-279 to GGG VORTAC.

PARIS TRANSITION (GARL5.PRX): From over TTT VOR/DME on TTT R-064 to ECKEY, then on PRX R-221 to PRX VOR/DME.

SOLDO TRANSITION (GARL5.SOLDO): From over TTT VOR/DME on TTT R-084 to SOLDO.

TEXARKANA TRANSITION (GARL5.TXK): From over TTT VOR/DME on TTT R-074 to SHERO, then on TXK R-244 to TXK VORTAC.

TYLER TRANSITION (GARL5.TYR): From over TTT VOR/DME on TTT R-094 to ROCKK, then on TYR R-303 to TYR VOR/DME.

SC-2, 22 FEB 2024 to 21 MAR 2024

SC-2, 22 FEB 2024 to 21 MAR 2024