

VOR/DME EWO 113.95 Chan 86 (Y)	APP CRS 132°	Rwy Idg TDZE Apt Elev N/A N/A 921
---	------------------------	---

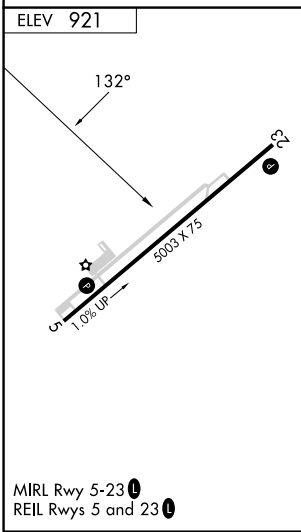
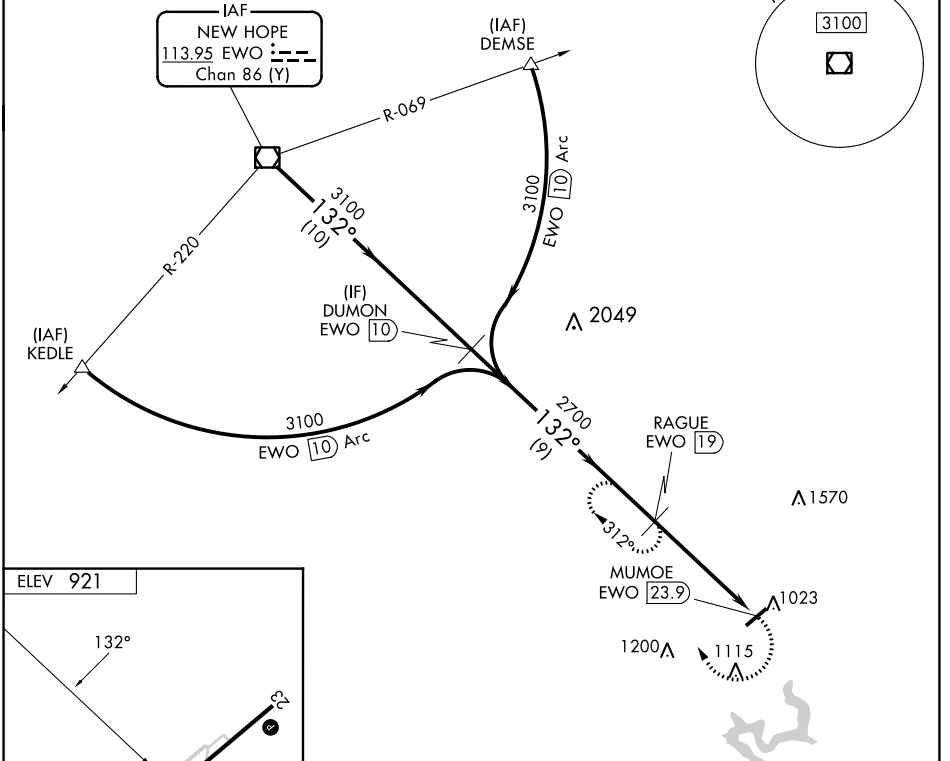
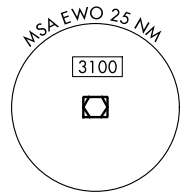
VOR/DME-A
TAYLOR COUNTY (AAS)

NA When local altimeter setting not received, use Somerset altimeter setting: increase all MDA 100 feet; increase Cat C visibility 1/4 mile and Cat D visibility 1/2 mile.

MISSED APPROACH: Climbing right turn to 3100 on heading 360° and on EWO R-132 to RAGUE/19 DME and hold.

AWOS-3 121.125	INDIANAPOLIS CENTER 121.175 353.65	UNICOM 122.7 (CTAF)
--------------------------	--	-------------------------------

DME REQUIRED



EWO VOR/DME	DUMON EWO 10	3100	EWO R-132	RAGUE EWO 19
3100	3100	2700	RAGUE EWO 19	MUMOE EWO 23.9
10 NM		9 NM		4.9 NM
CATEGORY	A	B	C	D
C CIRCLING	1540-1	619 (700-1)	1540-1 3/4 619 (700-1 3/4)	1660-2 1/4 739 (800-2 1/4)

SE-1, 22 FEB 2024 to 21 MAR 2024

SE-1, 22 FEB 2024 to 21 MAR 2024