

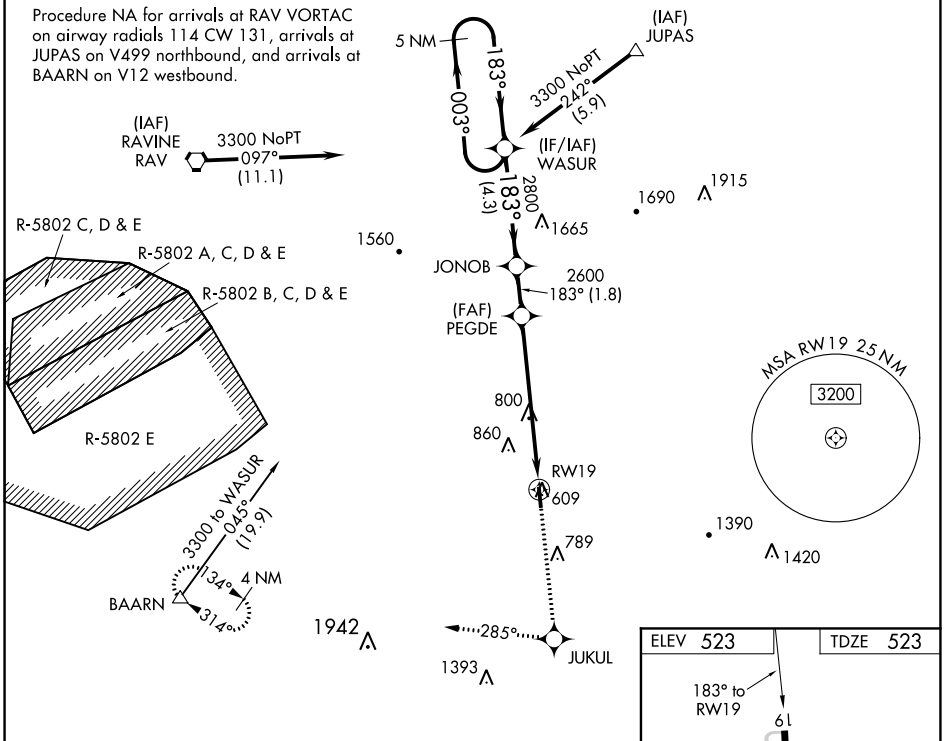
WAAS CH 73001 W19A	APP CRS 183°	Rwy ldg TDZE 523 Apt Elev 523
--	------------------------	---

RNAV (GPS) RWY 19

DECK (9D4)

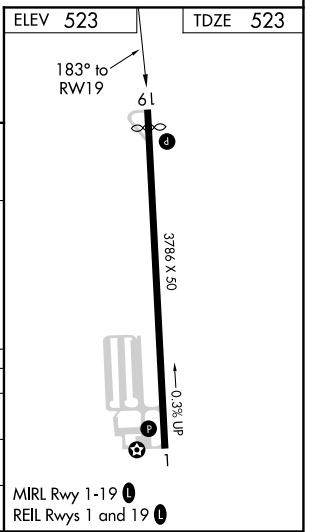
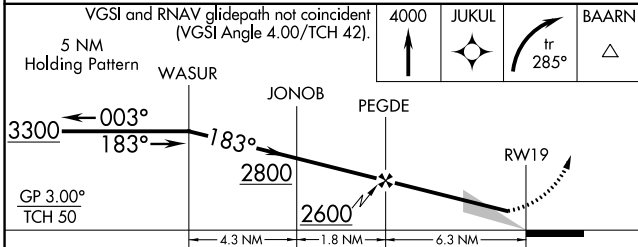
RNP APCH.	MISSED APPROACH: Climb to 4000 direct JUKUL and climbing right turn on track 285° to BAARN and hold.
<p>▼ When local altimeter setting not received, use Reading altimeter setting.</p> <p>▲ Circling Rwy 1 NA at night.</p>	

AWOS-2 118.45	RDG ASOS 127.1	HARRISBURG APP CON 118.25 269.45	UNICOM 122.8 (CTAF) 0
-------------------------	--------------------------	--	---------------------------------



NE-4, 09 SEP 2021 to 07 OCT 2021

NE-4, 09 SEP 2021 to 07 OCT 2021



CATEGORY	A	B	C	D
LPV DA	837-1 314 (400-1)			NA
LNVA MDA	1200-1	677 (700-1)	1200-2 677 (700-2)	NA
CIRCLING	1200-1 677 (700-1)	1240-1 717 (800-1)	1240-2 717 (800-2)	NA

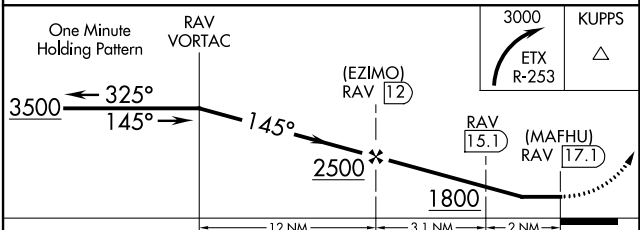
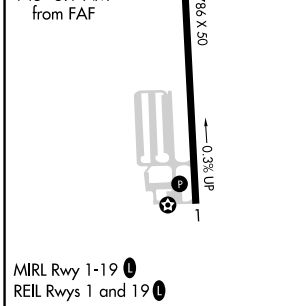
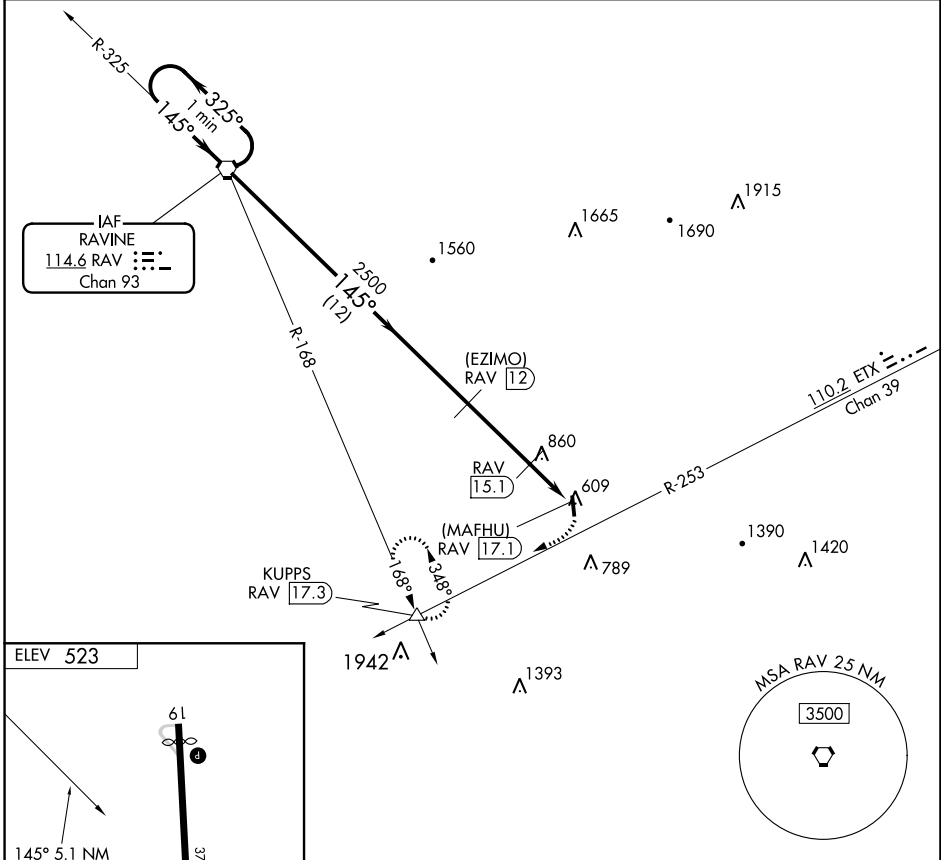
VORTAC RAV 114.6 Chan 93	APP CRS 145°	Rwy Idg TDZE Apt Elev	N/A N/A 523
--	------------------------	-----------------------------	--

VOR/DME or GPS-A

DECK (9D4)

▼ Use Harrisburg Intl, PA altimeter setting. If not received, procedure NA. Circling Rwy 1 NA at night.
▲ NA MISSED APPROACH: Climbing right turn to 3000, intercept the ETX VORTAC R-253 to KUPPUS INT and hold.

AWOS-2 118.45	RDG ASOS 127.1	HARRISBURG APP CON 118.25 269.45	UNICOM 122.8 (CTAF) 0
-------------------------	--------------------------	--	---------------------------------



CATEGORY	A	B	C	D
CIRCLING	1140-1	617 (700-1)	1140-1 ³ / ₄ 617 (700-1 ³ / ₄)	NA

NE-4, 09 SEP 2021 to 07 OCT 2021

NE-4, 09 SEP 2021 to 07 OCT 2021