

WAAS CH 99730 W21A	APP CRS 217°	Rwy Idg TDZE Apt Elev	5153 1372 1372
--	------------------------	-----------------------------	---

RNAV (GPS) RWY 21

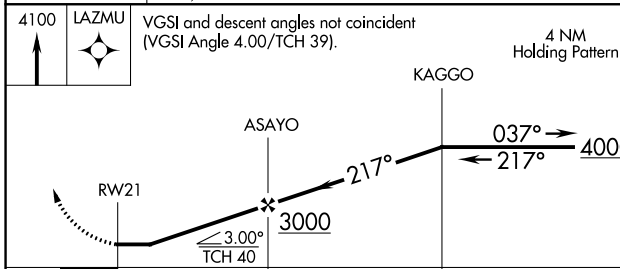
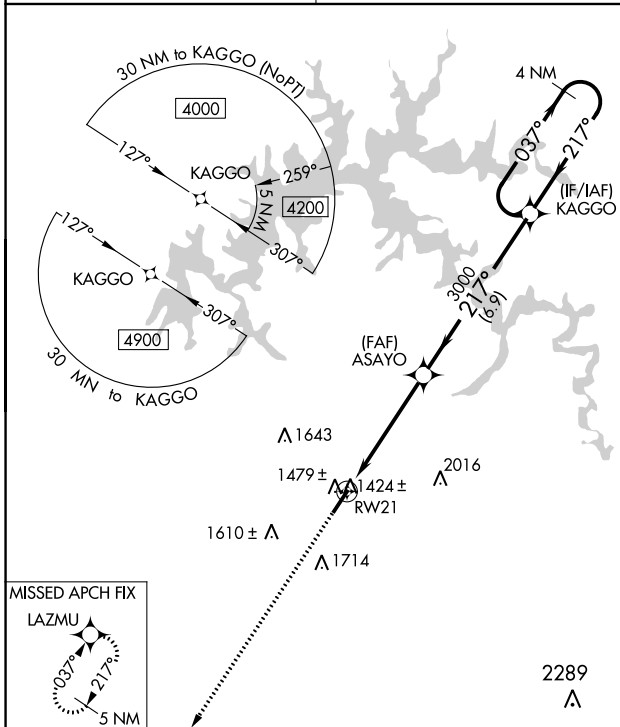
LIVINGSTON MUNI (8A.3)

RNP APCH - GPS.

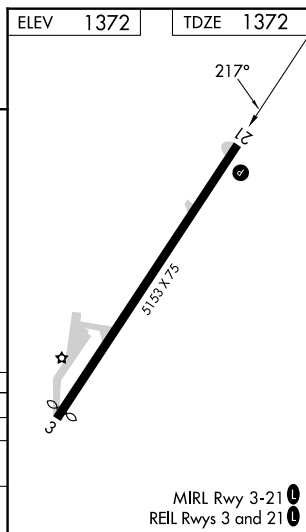
▼ Circling Rwy 3 NA at night. When local altimeter setting not received, use Crossville altimeter setting and increase all MDA 140 feet; increase LP and LNAV Cats C/D visibility 3/8 mile; increase Circling Cat B visibility 1/4 mile and Circling Cats C/D visibility 1/2 mile. Rwy 21 helicopter visibility reduction below 3/4 SM NA.

MISSED APPROACH:
Climb to 4100 direct LAZMU and hold.

AWOS-3 126.175	INDIANAPOLIS CENTER 124.625 371.925	UNICOM 122.8 (CTAF) 0
--------------------------	---	---------------------------------



CATEGORY	A	B	C	D
LP MDA	1700-1		328 (400-1)	
LNAV MDA	1760-1	388 (400-1)	1760-1 1/8	388 (400-1 1/8)
CIRCLING	1880-1 508 (600-1)	2080-1 708 (800-1)	2080-2 708 (800-2)	2360-3 988 (1000-3)



SE-1, 22 FEB 2024 to 21 MAR 2024

SE-1, 22 FEB 2024 to 21 MAR 2024

WAAS CH 86934 W03A	APP CRS 037°	Rwy Idg TDZE Apt Elev	5008 1370 1372
--	------------------------	-----------------------------	---

RNAV (GPS) RWY 3

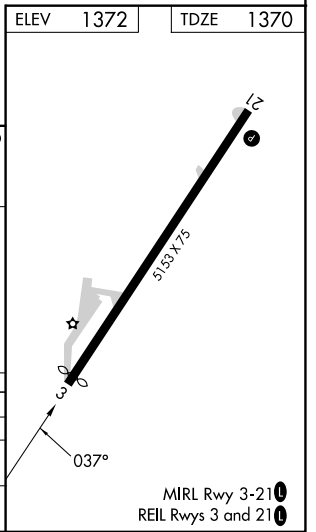
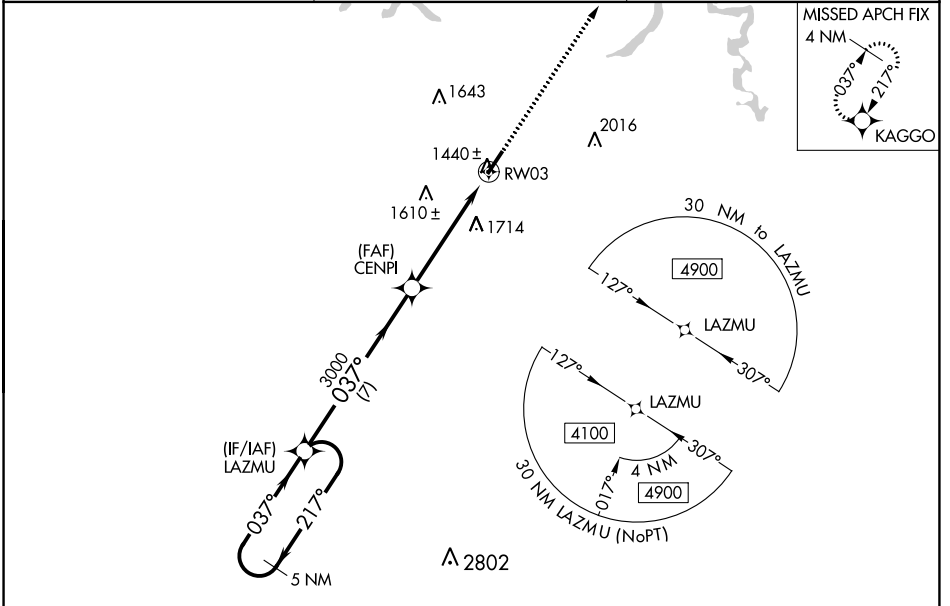
LIVINGSTON MUNI (8A.3)

RNP APCH - GPS.

⚠ When local altimeter setting not received, use Crossville altimeter setting and increase all MDA 140 feet, and increase LP Cat C and D and LNAV Cat C and D visibility $\frac{3}{8}$ mile, Circling Cat B visibility $\frac{1}{4}$ mile and Circling Cat C and D visibilities $\frac{1}{2}$ mile. Straight-in minimums NA at night, Circling Rwy 3 NA at night. Rwy 3 helicopter visibility reduction below 1 SM NA.

MISSED APPROACH:
Climb to 4000 direct KAGGO and hold.

AWOS-3 126.175	INDIANAPOLIS CENTER 124.625 371.925	UNICOM 122.8 (CTAF)
--------------------------	---	-------------------------------



CATEGORY	A	B	C	D
LP MDA		1720-1	350 (400-1)	
LNAV MDA	1840-1	470 (500-1)	1840-1 $\frac{3}{8}$	470 (500-1 $\frac{3}{8}$)
CIRCLING	1880-1 508 (600-1)	2080-1 708 (800-1)	2080-2 708 (800-2)	2360-3 988 (1000-3)

SE-1, 22 FEB 2024 to 21 MAR 2024

SE-1, 22 FEB 2024 to 21 MAR 2024

VOR/DME LVT	APP CRS	Rwy Idg	5153
114.35	216°	TDZE	1372
Chan 90 (Y)		Apt Elev	1372

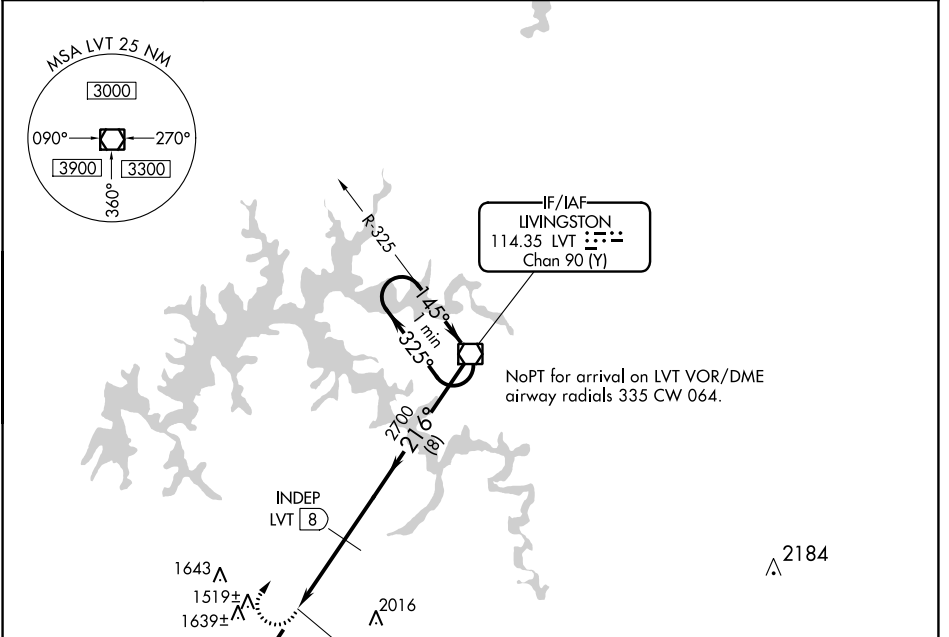
VOR/DME RWY 21

LIVINGSTON MUNI (8A.3)

⚠ Circling Rwy 3 NA at night. Rwy 21 helicopter visibility reduction below 3/4 SM NA. When local altimeter setting not received, use Crossville altimeter setting and increase all MDA 140 feet and increase S-21 Cat C visibility 1/4 mile, S-21 Cat D visibility and Circling Cat C/D visibilities 1/2 mile.

MISSED APPROACH: Climbing right turn to 4000 direct LVT VOR/DME and hold.

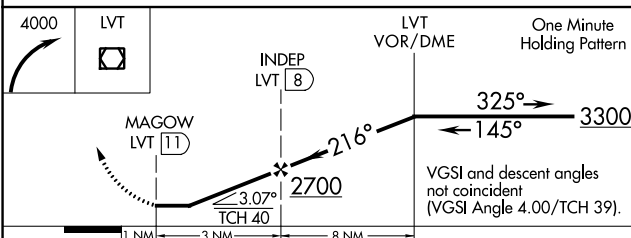
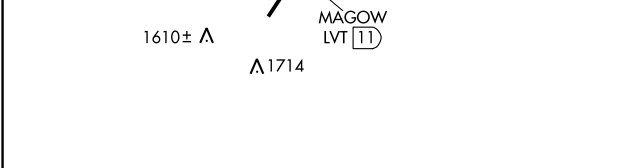
AWOS-3 126.175	INDIANAPOLIS CENTER 124.625 371.925	UNICOM 122.8 (CTAF) 0
--------------------------	---	---------------------------------



SE-1, 22 FEB 2024 to 21 MAR 2024

SE-1, 22 FEB 2024 to 21 MAR 2024

ELEV	1372	TDZE	1372
------	------	------	------



CATEGORY	A	B	C	D
S-21	1880-1 1/4	508 (600-1 1/4)	1880-1 1/2	508 (600-1 1/2)
CIRCLING	1880-1 1/4 508 (600-1 1/4)	2080-1 1/4 708 (800-1 1/4)	2080-2 708 (800-2)	2360-3 988 (1000-3)

