

WAAS CH 45639 W01A	APP CRS 007°	Rwy Idg TDZE Apt Elev	4902 1571 1600
--	------------------------	-----------------------------	---

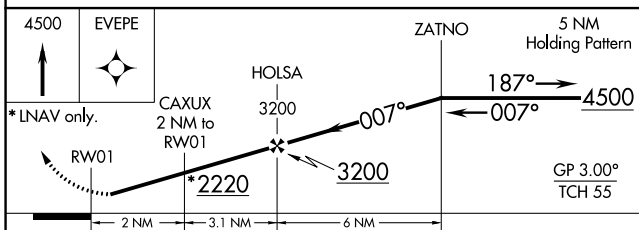
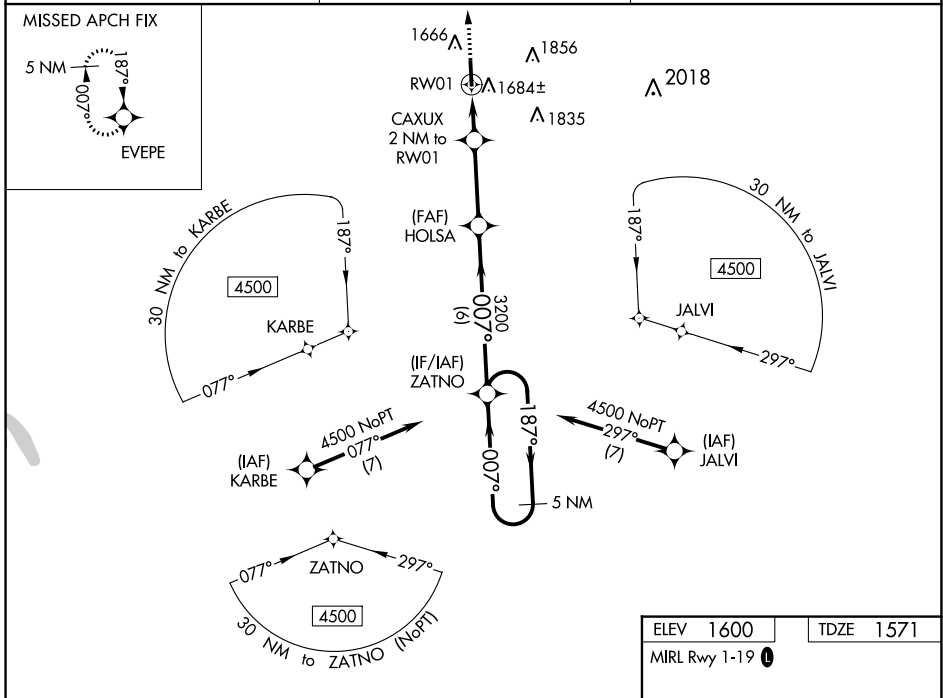
RNAV (GPS) RWY 1

TITUSVILLE (6G1)

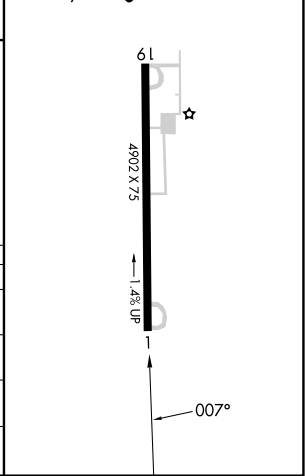
Baro-VNAV NA. DME/DME RNP-0.3 NA. Helicopter visibility reduction below 1 SM NA. Night landing: Rwy 1 NA. Use Franklin altimeter setting. When not received, use Port Meade altimeter setting and increase LPV DA to 1899, LNAV/VNAV DA to 1961 and all MDA 40 feet; increase LPV and LNAV/VNAV all Cats visibility 1/8 mile, increase LNAV Cats C/D and Circling Cat C visibility 1/4 mile.

MISSED APPROACH: Climb to 4500 direct EVEPE and hold, continue climb-in-hold to 4500.

FKL AWOS-3PT 118.175	YOUNGSTOWN APP CON * 133.95 322.3	CTAF 122.9 0
--------------------------------	---	------------------------



ELEV 1600	TDZE 1571
MIRL Rwy 1-19 0	



CATEGORY	A	B	C	D
LPV DA	1864-1		293 (300-1)	
LNAV/VNAV DA	1926-1¼		355 (400-1¼)	
LNAV MDA	1980-1	409 (400-1)	1980-1⅛	409 (400-1⅛)
C CIRCLING	2100-1	500 (500-1)	2200-1½ 600 (600-1½)	2280-2¼ 680 (700-2¼)

NE-4, 22 FEB 2024 to 21 MAR 2024

NE-4, 22 FEB 2024 to 21 MAR 2024

WAAS CH 99738 W19A	APP CRS 187°	Rwy Idg 4902 TDZE 1600 Apt Elev 1600
--	------------------------	---

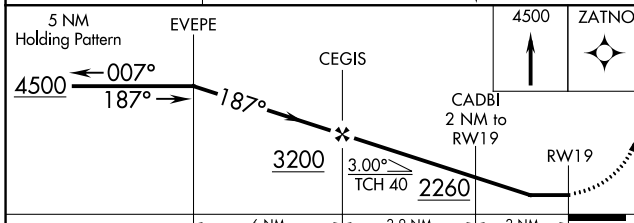
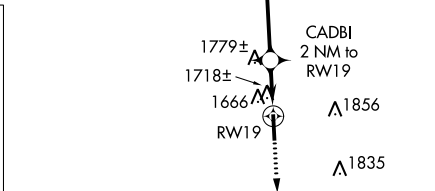
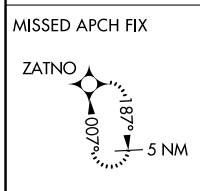
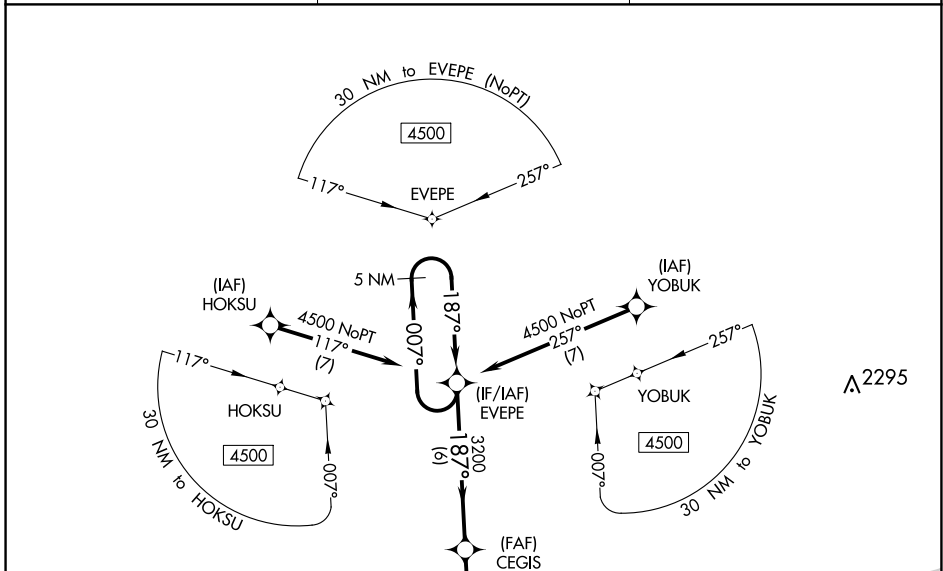
RNAV (GPS) RWY 19

TITUSVILLE (6G1)

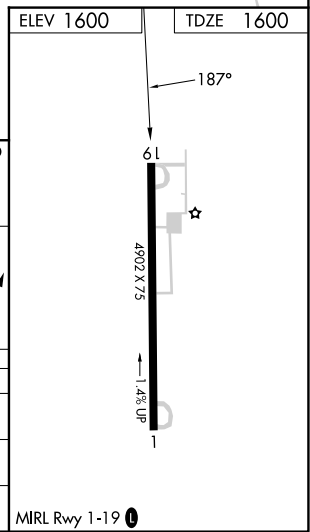
NA DME/DME RNP-0.3 NA. Helicopter visibility reduction below 3/4 SM NA. Use Franklin altimeter setting. When not received, use Port Meade altimeter setting and increase all MDA 40 feet; increase LP Cats C/D and Circling Cat C visibility 1/4 mile. Night landing: Rwy 1 NA.

MISSED APPROACH: Climb to 4500 direct ZATNO and hold.

FKL AWOS-3PT 118.175	YOUNGSTOWN APP CON ★ 133.95 322.3	CTAF 122.9
--------------------------------	---	----------------------



CATEGORY	A	B	C	D
LP MDA	2020-1 420 (500-1)		2020-1 1/8 420 (500-1 1/8)	
LNAV MDA	2080-1 480 (500-1)		2080-1 3/8 480 (500-1 3/8)	
C CIRCLING	2100-1 500 (500-1)		2200-1 1/2 600 (600-1 1/2)	2280-2 1/4 680 (700-2 1/4)



NE-4, 22 FEB 2024 to 21 MAR 2024

NE-4, 22 FEB 2024 to 21 MAR 2024