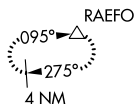
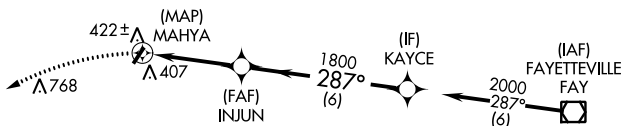


APP CRS	Rwy Idg	N/A
287°	TDZE	N/A
	Apt Elev	304

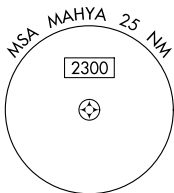
RNAV (GPS)-A

P K AIRPARK (5W4)

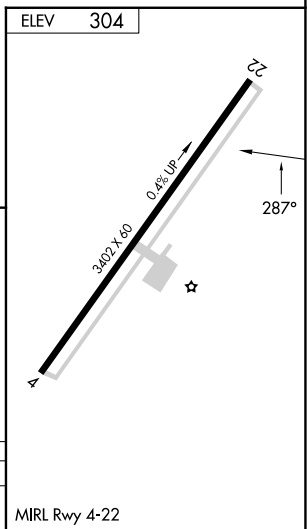
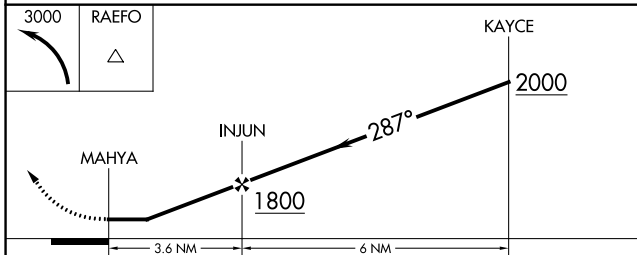
<p>▽ DME/DME RNP-0.3 NA. Procedure NA at night. Use Fayetteville altimeter setting.</p> <p>△ NA</p>	<p>MISSED APPROACH: Climbing left turn to 3000 direct RAEFO and hold.</p>
<p>FAYETTEVILLE APP CON</p> <p>127.8 290.25</p>	<p>UNICOM</p> <p>123.0 (CTAF)</p>



Procedure NA for arrival on FAY VOR/DME airway radials 225 CW 009.



1249 **△**



CATEGORY	A	B	C	D
☐ CIRCLING	840-1 536 (600-1)	860-1 556 (600-1)	920-1 ³ / ₄ 616 (700-1 ³ / ₄)	NA

MIRL Rwy 4-22

SE-2, 22 FEB 2024 to 21 MAR 2024

SE-2, 22 FEB 2024 to 21 MAR 2024