

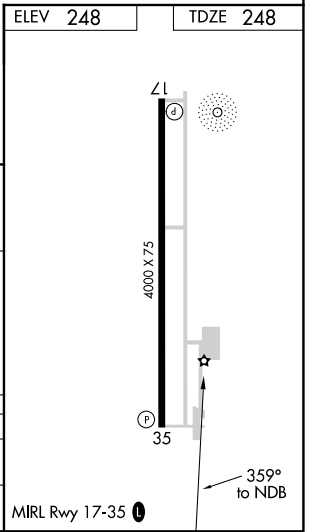
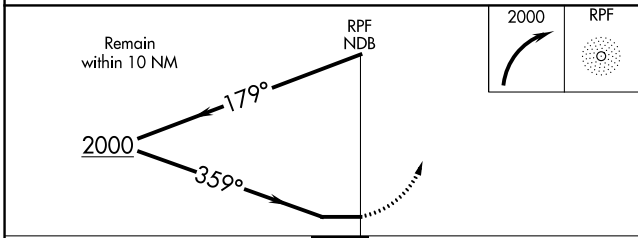
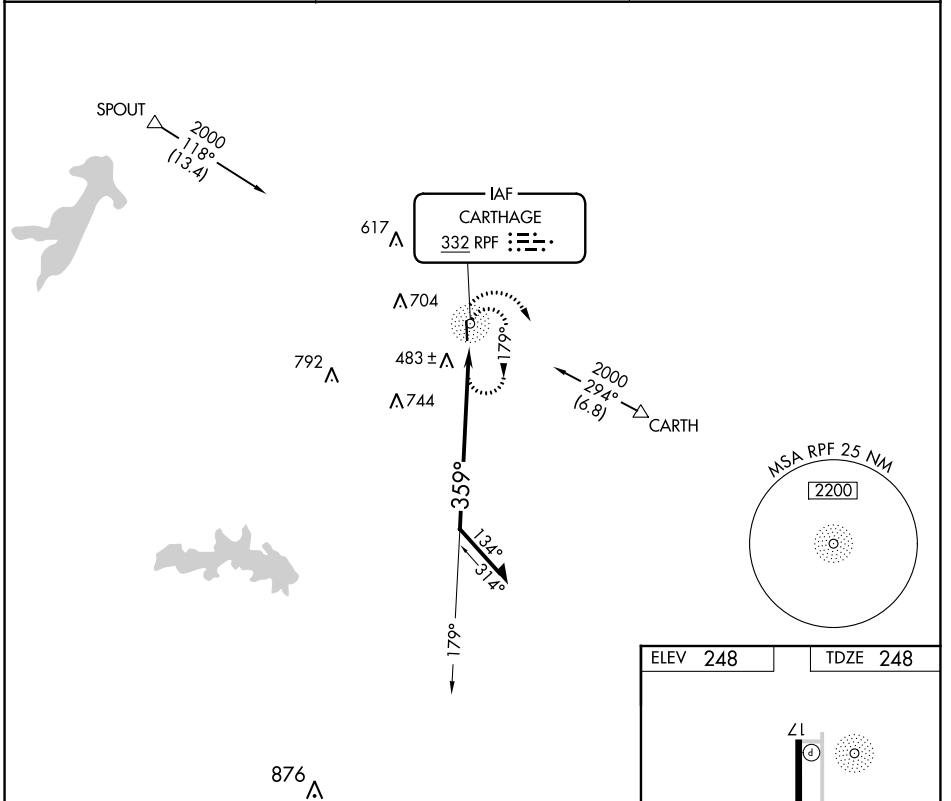
NDB RPF <b>332</b>	APP CRS <b>359°</b>	Rwy Idg TDZE Apt Elev	<b>4000</b> <b>248</b> <b>248</b>
-----------------------	------------------------	-----------------------------	---

**NDB RWY 35**  
PANOLA COUNTY-SHARPE FLD (4F2)

**⚠** When local altimeter setting not received, use Longview altimeter setting.  
Rwy 35 helicopter visibility reduction below ¼ SM NA. Rwy 17 helicopter visibility reduction below 1 SM NA. Circling Rwy 17 NA at night.

MISSED APPROACH: Climbing right turn to 2000 in RPF NDB holding pattern.

AWOS-3PT <b>121.125</b>	SHREVEPORT APP CON * <b>119.9 335.55</b>	UNICOM <b>122.8 (CTAF) 0</b>
----------------------------	---	---------------------------------



CATEGORY	A	B	C	D
S-35	1000-1 752 (800-1)	1000-1¼ 752 (800-1¼)	1000-2¼ 752 (800-2¼)	NA
CIRCLING	1000-1 752 (800-1)	1000-1¼ 752 (800-1¼)	1060-2½ 812 (900-2½)	NA

SC-2, 19 MAY 2022 to 16 JUN 2022

SC-2, 19 MAY 2022 to 16 JUN 2022

APP CRS	Rwy Idg	<b>4000</b>
<b>174°</b>	TDZE	<b>247</b>
	Apt Elev	<b>248</b>

# RNAV (GPS) RWY 17

PANOLA COUNTY-SHARPE FLD (4F2)

RNP APCH.

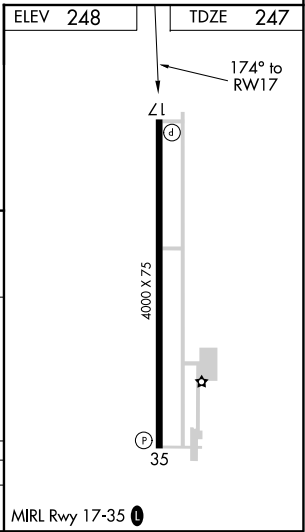
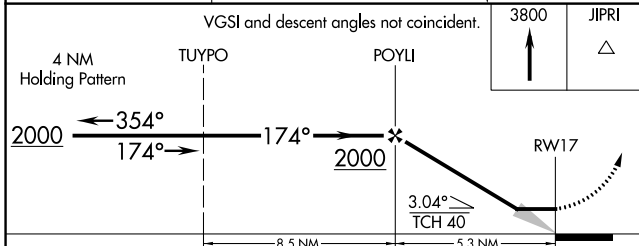
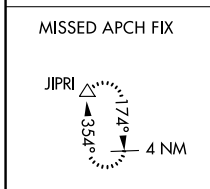
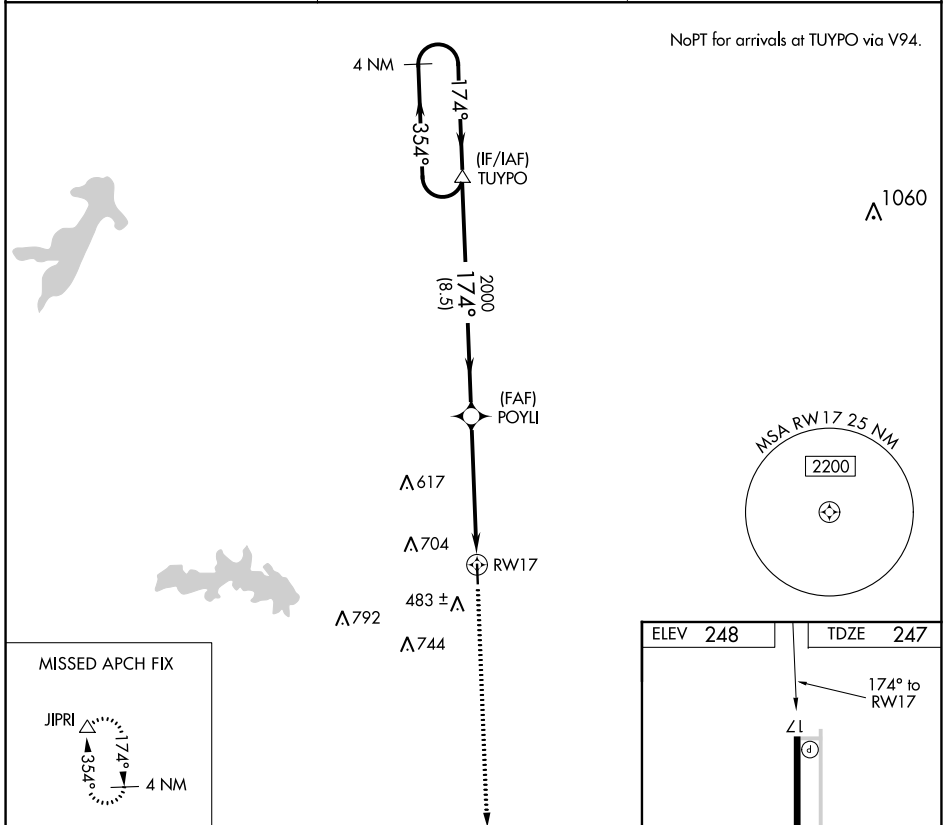
**NA** Use Shreveport Rgnl altimeter setting; when not received use East Texas Rgnl altimeter setting. Procedure NA at night. Rwy 17 helicopter visibility reduction below 1 SM NA.

**MISSED APPROACH:** Climb to 3800 direct JIPRI and hold, continue climb-in-hold to 3800.

AWOS-3PT  
**121.125**

SHREVEPORT APP CON \*  
**119.9 335.55**

UNICOM  
**122.8 (CTAF)**



CATEGORY	A	B	C	D
LNAV MDA	760-1	513 (600-1)	760-1½ 513 (600-1½)	NA

SC-2, 19 MAY 2022 to 16 JUN 2022

SC-2, 19 MAY 2022 to 16 JUN 2022

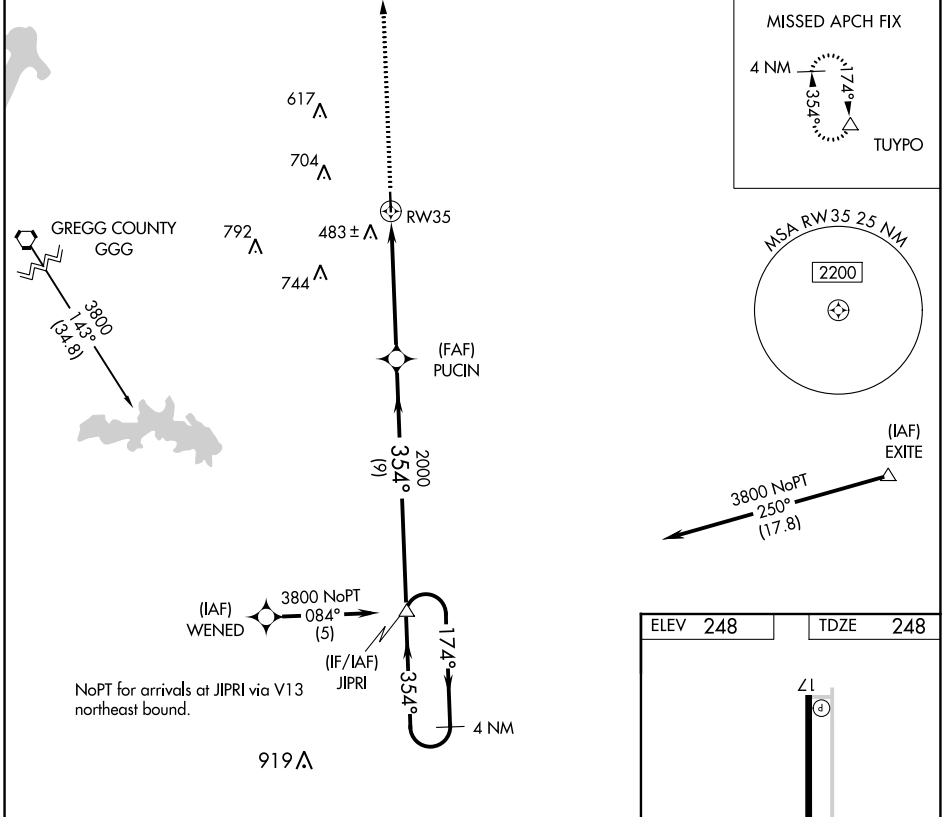
APP CRS	Rwy Idg	<b>4000</b>
<b>354°</b>	TDZE	<b>248</b>
	Apt Elev	<b>248</b>

# RNAV (GPS) RWY 35

PANOLA COUNTY-SHARPE FLD (4F2)

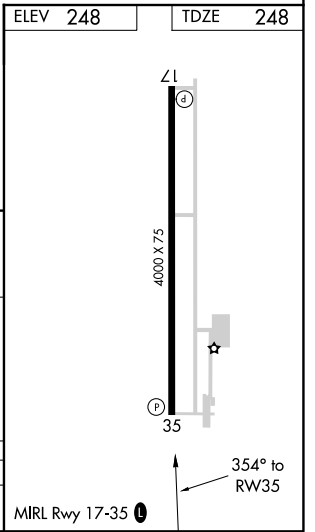
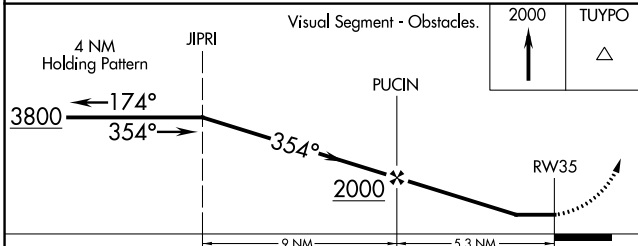
RNP APCH.	<p><b>▲ NA</b> Rwy 35 helicopter visibility reduction below <math>\frac{3}{4}</math> SM NA. Use Shreveport Regional altimeter setting; when not received use East Texas Regional altimeter setting.</p>	<p>MISSED APPROACH: Climb to 2000 direct TUYPO and hold.</p>

AWOS-3PT <b>121.125</b>	SHREVEPORT APP CON * <b>119.9 335.55</b>	UNICOM <b>122.8 (CTAF) 0</b>
----------------------------	---	---------------------------------



SC-2, 19 MAY 2022 to 16 JUN 2022

SC-2, 19 MAY 2022 to 16 JUN 2022



CATEGORY	A	B	C	D
LNAV MDA	840-1	592 (600-1)	840-1½ 592 (600-1½)	NA