

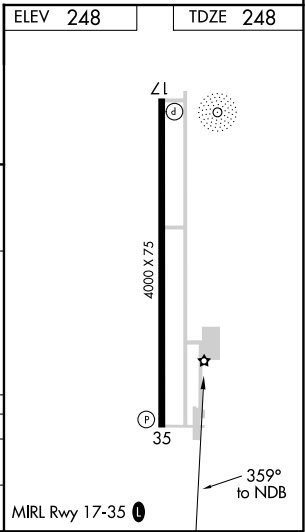
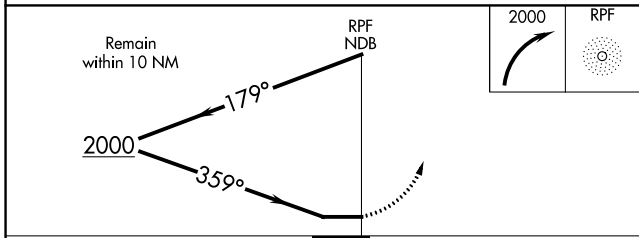
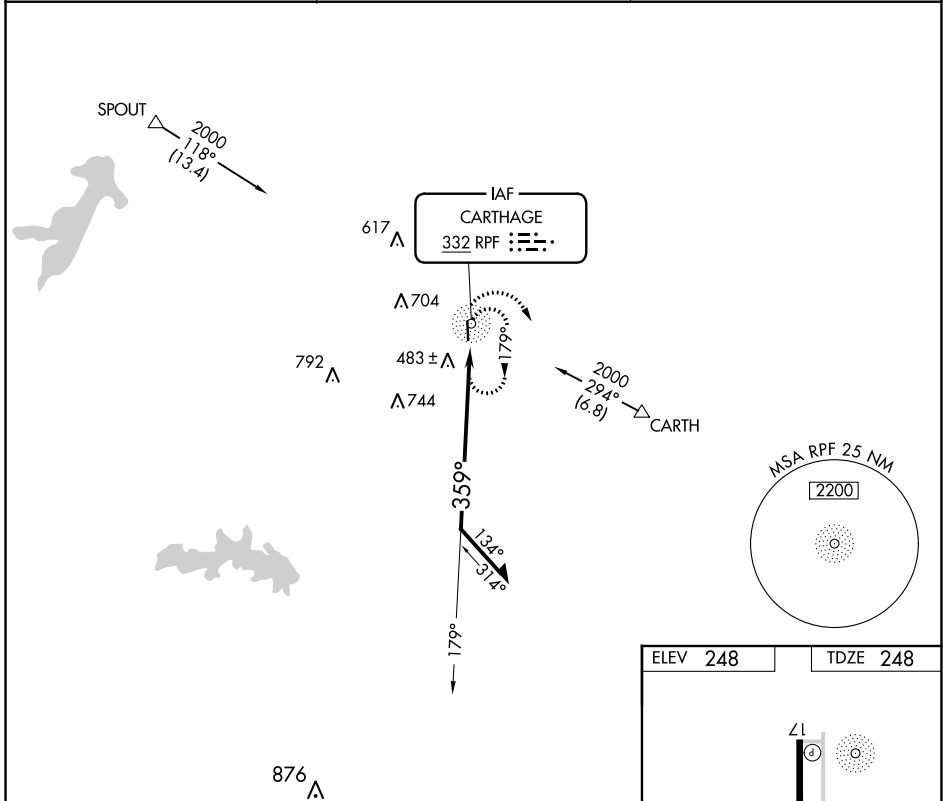
NDB RPF 332	APP CRS 359°	Rwy Idg TDZE Apt Elev	4000 248 248
-----------------------	------------------------	-----------------------------	---

NDB RWY 35
PANOLA COUNTY-SHARPE FLD (4F2)

⚠ When local altimeter setting not received, use Longview altimeter setting.
Rwy 35 helicopter visibility reduction below ¼ SM NA. Rwy 17 helicopter visibility reduction below 1 SM NA. Circling Rwy 17 NA at night.

MISSED APPROACH: Climbing right turn to 2000 in RPF NDB holding pattern.

AWOS-3PT 121.125	SHREVEPORT APP CON * 119.9 335,55	UNICOM 122.8 (CTAF) 0
----------------------------	---	---------------------------------



CATEGORY	A	B	C	D
S-35	1000-1 752 (800-1)	1000-1¼ 752 (800-1¼)	1000-2¼ 752 (800-2¼)	NA
CIRCLING	1000-1 752 (800-1)	1000-1¼ 752 (800-1¼)	1060-2½ 812 (900-2½)	NA

SC-2, 19 MAY 2022 to 16 JUN 2022

SC-2, 19 MAY 2022 to 16 JUN 2022

APP CRS	Rwy Idg	4000
174°	TDZE	247
	Apt Elev	248

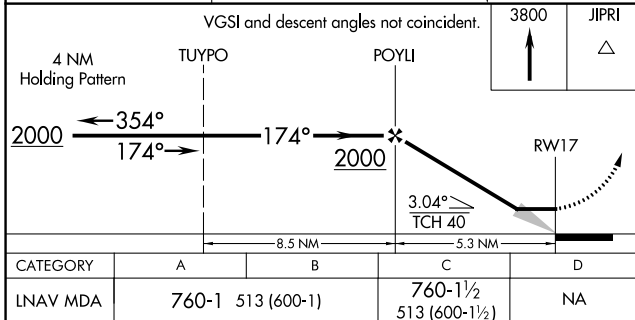
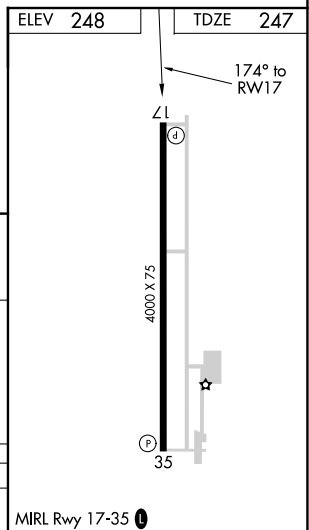
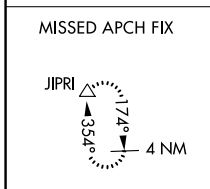
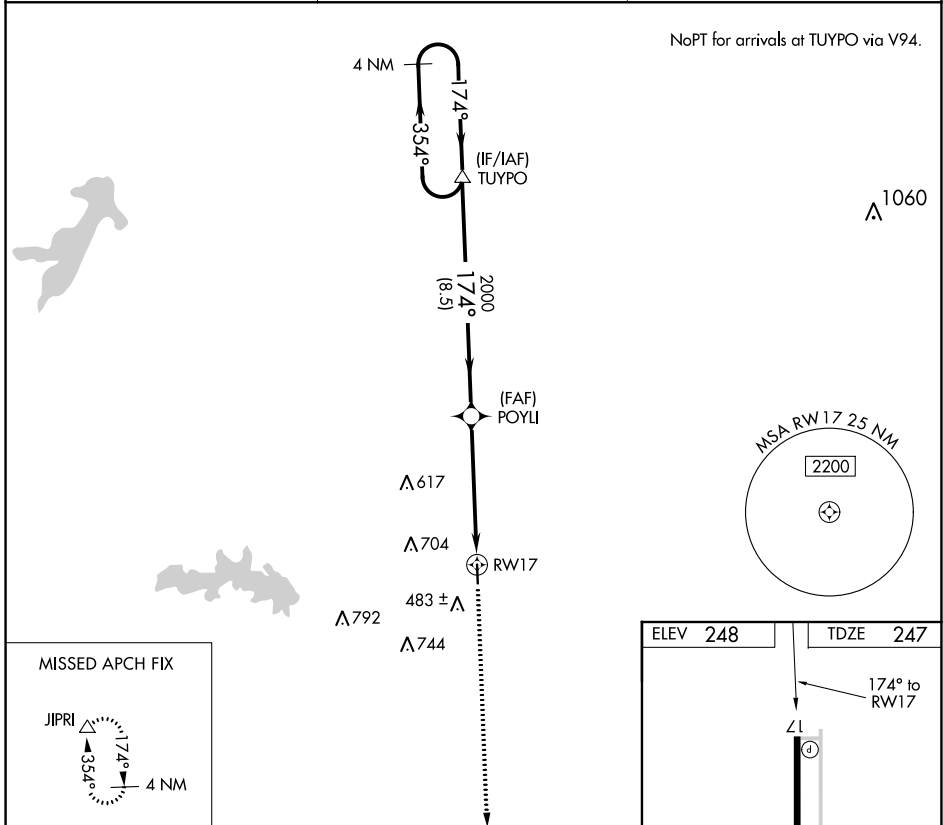
RNAV (GPS) RWY 17

PANOLA COUNTY-SHARPE FLD (4F2)

RNP APCH.	MISSED APPROACH: Climb to 3800 direct JIPRI and hold, continue climb-in-hold to 3800.
<p>▲ NA Use Shreveport Rgnl altimeter setting; when not received use East Texas Rgnl altimeter setting. Procedure NA at night. Rwy 17 helicopter visibility reduction below 1 SM NA.</p>	

AWOS-3PT 121.125	SHREVEPORT APP CON * 119.9 335.55	UNICOM 122.8 (CTAF) ①
----------------------------	---	--

NoPT for arrivals at TUYPO via V94.



CATEGORY	A	B	C	D
LNAV MDA	760-1	513 (600-1)	760-1½ 513 (600-1½)	NA

SC-2, 19 MAY 2022 to 16 JUN 2022

SC-2, 19 MAY 2022 to 16 JUN 2022

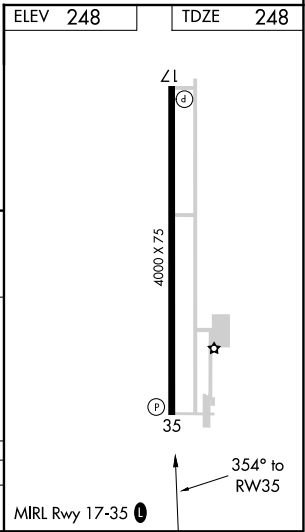
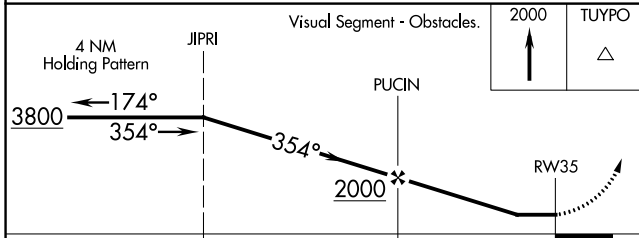
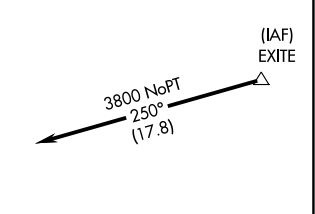
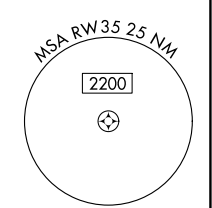
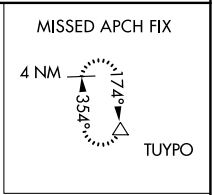
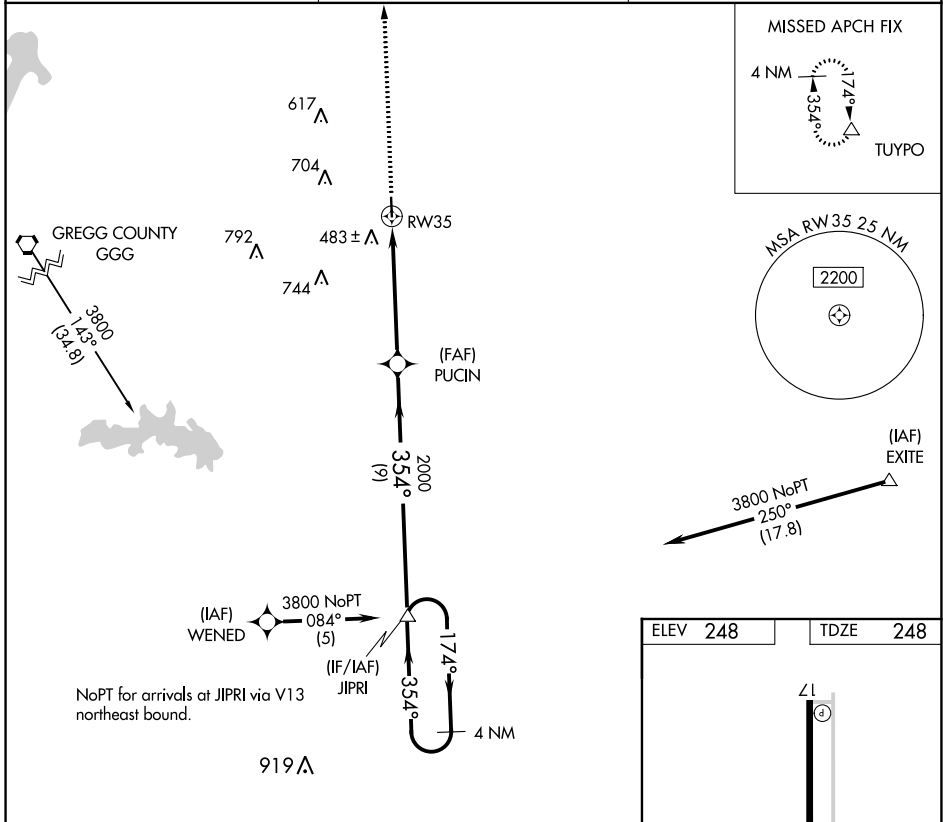
APP CRS	Rwy Idg	4000
354°	TDZE	248
	Apt Elev	248

RNAV (GPS) RWY 35

PANOLA COUNTY-SHARPE FLD (4F2)

RNP APCH.	<p>▲ NA Rwy 35 helicopter visibility reduction below 3/4 SM NA. Use Shreveport Regional altimeter setting; when not received use East Texas Regional altimeter setting.</p>	<p>MISSED APPROACH: Climb to 2000 direct TUYPO and hold.</p>

AWOS-3PT 121.125	SHREVEPORT APP CON * 119.9 335.55	UNICOM 122.8 (CTAF) 0
----------------------------	---	---------------------------------



CATEGORY	A	B	C	D
LNAV MDA	840-1	592 (600-1)	840-1½ 592 (600-1½)	NA

SC-2, 19 MAY 2022 to 16 JUN 2022

SC-2, 19 MAY 2022 to 16 JUN 2022

INSTRUMENT APPROACH PROCEDURE CHARTS

A IFR ALTERNATE AIRPORT MINIMUMS

Standard alternate minimums for non-precision approaches and approaches with vertical guidance [NDB, VOR, LOC, TACAN, LDA, SDF, VOR/DME, ASR, RNAV (GPS) or RNAV (RNP)] are 800-2. Standard alternate minimums for precision approaches (ILS, PAR, or GLS) are 600-2. Airports within this geographical area that require alternate minimums other than standard or alternate minimums with restrictions are listed below. NA - means alternate minimums are not authorized due to unmonitored facility, absence of weather reporting service, or lack of adequate navigation coverage. Civil pilots see FAR 91. IFR Alternate Minimums: Ceiling and Visibility Minimums not applicable to USA/USN/USAF. Pilots must review the IFR Alternate Minimums Notes for alternate airfield suitability.

NAME	ALTERNATE MINIMUMS
ABILENE, TX	
ABILENE	
RGNL (ABI).....	ILS or LOC Rwy 35R ¹² LOC Rwy 17R ³ RNAV (GPS) Rwy 17L ³ RNAV (GPS) Rwy 35R ¹³

¹NA when local weather not available.
²LOC, Category E, 900-3.
³Category E, 900-3.

AMARILLO, TX	
RICK HUSBAND AMARILLO	
INTL (AMA).....	ILS or LOC Rwy 4 ¹²³ LDA/DME Rwy 22 ¹²⁴ RADAR-1 ²⁵ RNAV (GPS) Y Rwy 4 ¹⁴ RNAV (GPS) Y Rwy 13 ¹⁶ RNAV (GPS) Y Rwy 22 ¹⁴ RNAV (GPS) Y Rwy 31 ¹⁶ VOR Rwy 13 ⁵ VOR Rwy 22 ⁴ VOR Rwy 31 ⁴

¹NA when local weather not available.
²NA when control tower closed.
³LOC, Category D, 800-2¼; Category E, 900-3.
⁴Category D, 800-2¼; Category E, 900-3.
⁵Category E, 900-3.
⁶Category D, 800-2¼.

ANDREWS, TX	
ANDREWS	
COUNTY (E11).....	RNAV (GPS) Rwy 16
NA when local weather not available.	
Categories A, B, 800-2¼; Category C, 900-2½.	

ARLINGTON, TX	
ARLINGTON	
MUNI (GKY).....	ILS or LOC/DME Rwy 34 ¹ RNAV (GPS) Rwy 34
NA when local weather not available.	
¹ NA when control tower closed.	

NAME	ALTERNATE MINIMUMS
ATHENS, TX	
ATHENS	
MUNI (F44).....	RNAV (GPS) Rwy 18 RNAV (GPS) Rwy 36
NA when local weather not available.	

BIG SPRING, TX	
BIG SPRING MC MAHON- WRINKLE (BPG).....	RNAV (GPS) Rwy 6 RNAV (GPS) Rwy 17 RNAV (GPS) Rwy 24 ¹ RNAV (GPS) Rwy 35 VOR/DME Rwy 17 VOR/DME Rwy 35
NA when local weather not available.	
¹ Categories, A, B, 900-2.	

BORGER, TX	
HUTCHINSON COUNTY (BGD).....	RNAV (GPS) Rwy 17 RNAV (GPS) Rwy 35
Category D, 800-2¼.	

BOWIE, TX	
BOWIE	
MUNI (OF2).....	RNAV (GPS) Rwy 17 RNAV (GPS) Rwy 35
Category C, 800-2¼.	

BRECKENRIDGE, TX	
STEPHENS COUNTY (BKD).....	RNAV (GPS) Rwy 17 RNAV (GPS) Rwy 35
NA when local weather not available.	

BRIDGEPORT, TX	
BRIDGEPORT	
MUNI (XBP).....	RNAV (GPS) Rwy 18 VOR/DME Rwy 18
NA when local weather not available.	

19 MAY 2022 to 16 JUN 2022

19 MAY 2022 to 16 JUN 2022

NAME ALTERNATE MINIMUMS

CANADIAN, TX

HEMPHILL
COUNTY (HHF).....**RNAV (GPS) Rwy 4**
RNAV (GPS) Rwy 22

NA when local weather not available.
Category C, 900-2½; Category D, 1000-3.

CARTHAGE, TX

PANOLA COUNTY-SHARPE
FLD (4F2).....**NDB Rwy 35**

NA when local weather not available.
Category C, 900-2½.

CHILDRESS, TX

CHILDRESS
MUNI (CDS).....**RNAV (GPS) Rwy 36**
VOR Rwy 36

NA when local weather not available.
Category D, 800-2½.

CLEBURNE, TX

CLEBURNE
RGNL (CPT).....**RNAV (GPS) Rwy 15**
RNAV (GPS) Rwy 33

NA when local weather not available.
Category C, 900-2½; Category D, 900-2¼.

CORSICANA, TX

C DAVID CAMPBELL FLD-CORSICANA
MUNI (CRS).....**RNAV (GPS) Rwy 32**

NA when local weather not available.

DALHART, TX

DALHART
MUNI (DHT).....**VOR Rwy 17**

Category D, 800-2¼.

DALLAS, TX

ADDISON (ADS).....**ILS or LOC Rwy 16¹**
ILS or LOC Rwy 34
RNAV (GPS) Rwy 16²
RNAV (GPS) Rwy 34²

NA when local weather not available.

¹LOC, Category D, 800-2½.
²Category D, 800-2½.

DALLAS

EXEC (RBD).....**ILS or LOC Rwy 31¹²**
RNAV (GPS) Rwy 17³
RNAV (GPS) Rwy 31³
RNAV (GPS) Rwy 35³
VOR Rwy 17³

NA when local weather not available.

¹NA when control tower closed.

²LOC, Category D, 800-2¼.

³Category D, 800-2¼.

NAME ALTERNATE MINIMUMS

DALLAS, TX (CON'T)

DALLAS LOVE
FLD (DAL).....**ILS or LOC Rwy 31L¹**
ILS or LOC Rwy 31R²
ILS Y or LOC Y Rwy 13L³
ILS Y or LOC Y Rwy 13R³
RNAV (GPS) Y Rwy 13L⁴
RNAV (GPS) Y Rwy 13R⁴
RNAV (GPS) Y Rwy 31L⁵
RNAV (GPS) Y Rwy 31R⁴
RNAV (GPS) Z Rwy 13L⁴
RNAV (GPS) Z Rwy 13R⁴

¹LOC, Categories A, B, 1100-2; Categories C, D, 1100-3.

²LOC, Categories A, B, 900-2; Category C, 900-2½; Category D, 1100-3.

³LOC, Category D, 1100-3.

⁴Category D, 1100-3.

⁵Categories A, B, 900-2; Category C, 900-2½; Category D, 1100-3.

MCKINNEY

NTL (TKI).....**ILS or LOC Rwy 18¹²**
RNAV (GPS) Rwy 18³
RNAV (GPS) Rwy 36³
VOR/DME-A⁴

NA when local weather not available.

¹NA when control tower closed.

²LOC, Category D, 800-2½.

³Category D, 800-2½.

⁴Category C, 800-2¼; Category D, 800-2½.

DALLAS-FORT WORTH, TX

DALLAS-FORT WORTH
INTL (DFW).....**CONVERGING ILS Rwy 13R¹**
CONVERGING ILS Rwy 31R²
ILS or LOC Rwy 18R³

¹Categories A, B, C, 900-2½.

²ILS, 1100-4.

³ILS, 700-2.

DECATUR, TX

DECATUR MUNI (LUD).....**RNAV (GPS) Rwy 17**
RNAV (GPS) Rwy 35

NA when local weather not available.

DENTON, TX

DENTON
ENTERPRISE (DTO).....**RNAV (GPS) Rwy 18L**
RNAV (GPS) Rwy 18R
RNAV (GPS) Rwy 36L
RNAV (GPS) Rwy 36R

NA when local weather not available.

Category D, 800-2¼.

19 MAY 2022 to 16 JUN 2022

19 MAY 2022 to 16 JUN 2022

NAME ALTERNATE MINIMUMS

DUMAS, TX

MOORE
COUNTY (DUX).....RNAV (GPS) Rwy 1
RNAV (GPS) Rwy 19

NA when local weather not available.
Category D, 800-2½.

EASTLAND, TX

EASTLAND
MUNI (ETN).....RNAV (GPS) Rwy 17
RNAV (GPS) Rwy 35

NA when local weather not available.
Category B, 900-2; Category C, 900-2½.

FORT WORTH, TX

FORT WORTH
ALLIANCE (AFW).....ILS or LOC Rwy 16L¹
ILS or LOC Rwy 34R¹
RNAV (GPS) Rwy 16L²
RNAV (GPS) Rwy 16R²
RNAV (GPS) Rwy 34R²

¹LOC, Category E, 800-2¼.
²Category E, 800-2¼.

FORT WORTH MEACHAM

INTL (FTW).....ILS or LOC Rwy 16
RNAV (GPS) Rwy 16
RNAV (GPS) Rwy 34

Category D, 800-2½.

FORT WORTH

SPINKS (FWS).....RNAV (GPS) Rwy 18R
RNAV (GPS) Rwy 36L

NA when local weather not available.

GAINESVILLE, TX

GAINESVILLE
MUNI (GLE).....RNAV (GPS) Rwy 18
RNAV (GPS) Rwy 36¹

Category D, 800-2½.
¹NA when local weather not available.

GILMER, TX

FOX STEPHENS FLD - GILMER
MUNI (JXI).....RNAV (GPS) Rwy 18
RNAV (GPS) Rwy 36

NA when local weather not available.
Category C, 800-2¼.

GRAHAM, TX

GRAHAM MUNI (RPH).....RNAV (GPS) Rwy 3
RNAV (GPS) Rwy 21

NA when local weather not available.

GRANBURY, TX

GRANBURY
RGNL (GDJ).....RNAV (GPS) Rwy 14

NA when local weather not available.

NAME ALTERNATE MINIMUMS

GRAND PRAIRIE, TX

GRAND PRAIRIE
MUNI (GPM).....RNAV (GPS) Rwy 36
VOR Rwy 36

NA when local weather not available.
Categories A, B, 800-2½.

GREENVILLE, TX

MAJORS (GVT).....ILS Y or LOC Y Rwy 17¹²
ILS Z or LOC Z Rwy 17¹²³
RNAV (GPS) Rwy 17³⁴
RNAV (GPS) Rwy 35³⁴
TACAN Rwy 17³⁴
TACAN Rwy 35³⁴
VOR/DME Rwy 17³⁴

¹NA when control tower closed.
²LOC, Category D, 800-2¼; Category E, 800-2¼.
³NA when local weather not available.
⁴Category D, 800-2¼; Category E, 800-2¼.

HENDERSON, TX

RUSK COUNTY (RFI).....RNAV (GPS) Rwy 17

NA when local weather not available.
Category C, 800-2½.

HEREFORD, TX

HEREFORD
MUNI (HRX).....RNAV (GPS) Rwy 2
RNAV (GPS) Rwy 20

NA when local weather not available.
Category D, 900-2¼.

HILLSBORO, TX

HILLSBORO
MUNI (INJ).....RNAV (GPS) Rwy 16
RNAV (GPS) Rwy 34

NA when local weather not available.

LAMESA, TX

LAMESA
MUNI (LUV).....RNAV (GPS) Rwy 16
RNAV (GPS) Rwy 34

Category D, 900-2¼.

LANCASTER, TX

LANCASTER
RGNL (LNC).....RNAV (GPS) Rwy 31

NA when local weather not available.
Category C, 800-2¼; Category D, 800-2½.

19 MAY 2022 to 16 JUN 2022

19 MAY 2022 to 16 JUN 2022

NAME ALTERNATE MINIMUMS

LONGVIEW, TX

EAST TEXAS
 RGNL (GGG).....ILS or LOC Rwy 13¹
 RNAV (GPS) Rwy 13²
 RNAV (GPS) Rwy 18³
 RNAV (GPS) Rwy 31²
 RNAV (GPS) Rwy 36³
 VOR/DME or TACAN Rwy 13²
 VOR/DME or TACAN Rwy 31²

NA when local weather not available.
¹ILS, LOC, Category D, 800-2¼;
 Category E, 800-2½.
²Category D, 800-2¼; Category E, 800-2½.
³Category D, 800-2¼.

LUBBOCK, TX

LUBBOCK PRESTON SMITH
 INTL (LBB).....ILS or LOC Rwy 17R¹
 ILS or LOC Rwy 26¹
 RNAV (GPS) Rwy 8²
 RNAV (GPS) Rwy 26²
 RNAV (GPS) Y Rwy 17R²
 RNAV (GPS) Y Rwy 35L²
 VOR/DME or TACAN Rwy 26²³

¹ILS, Category D, 700-2; Category E, 900-3;
²LOC, Category E, 900-3.
³Category E, 900-3.
 NA when local weather not available.

MESQUITE, TX

MESQUITE METRO (HQZ).....ILS or LOC Rwy 18¹
 LOC/DME BC Rwy 36
 RNAV (GPS) Rwy 18
 RNAV (GPS) Rwy 36

NA when local weather not available.
¹ILS, Category C, 800-2.

MIDLOTHIAN/WAXAHACHIE, TX

MID-WAY
 RGNL (JWY).....RNAV (GPS) Rwy 18
 RNAV (GPS) Rwy 36¹

Category D, 800-2¼.
¹NA when local weather not available.

MINEOLA/QUITMAN, TX

WOOD COUNTY - COLLINS
 FLD (JDD).....RNAV (GPS) Rwy 18
 RNAV (GPS) Rwy 36

NA when local weather not available.

MINERAL WELLS, TX

MINERAL WELLS
 RGNL (MWL).....RNAV (GPS) Rwy 31
 NA when local weather not available.

NAME ALTERNATE MINIMUMS

MOUNT PLEASANT, TX

MOUNT PLEASANT
 RGNL (OSA).....RNAV (GPS) Rwy 17¹
 RNAV (GPS) Rwy 31
 RNAV (GPS) Rwy 35¹

NA when local weather not available.
¹Category D, 800-2¼.

PAMPA, TX

PERRY LEFORS
 FLD (PPA).....RNAV (GPS) Rwy 17
 VOR/DME-A

NA when local weather not available.
 Category D, 800-2¼.

PARIS, TX

COX FLD (PRX).....RNAV (GPS) Rwy 17
 RNAV (GPS) Rwy 35
 VOR Rwy 35

NA when local weather not available.
 Category D, 800-2¼.

PERRYTON, TX

PERRYTON OCHILTREE
 COUNTY (PYX).....RNAV (GPS) Rwy 17
 RNAV (GPS) Rwy 35

NA when local weather not available.

PLAINVIEW, TX

HALE COUNTY (PVW).....RNAV (GPS) Rwy 4
 RNAV (GPS) Rwy 22

NA when local weather not available.
 Categories C, D, 800-2¼.

ROCKWALL, TX

RAPLH M HALL/ROCKWALL
 MUNI (F46).....RNAV (GPS) Rwy 17
 RNAV (GPS) Rwy 35

NA when local weather not available.

SEMINOLE, TX

GAINES
 COUNTY (GNC).....RNAV (GPS) Rwy 35
 NA when local weather not available.

SHERMAN/DENSION, TX

NORTH TEXAS RGNL/PERRIN
 FLD (GYI).....RNAV (GPS) Rwy 17L¹
 RNAV (GPS) Rwy 35R¹
 VOR-A

Category D, 800-2½.
¹NA when local weather not available.

SNYDER, TX

WINSTON
 FLD (SNK).....RNAV (GPS) Rwy 35
 NA when local weather not available.

19 MAY 2022 to 16 JUN 2022

19 MAY 2022 to 16 JUN 2022

22139

NAME ALTERNATE MINIMUMS

NAME ALTERNATE

STEPHENVILLE, TX

STEPHENVILLE CLARK
RGNL (SEP).....RNAV (GPS) Rwy 14
RNAV (GPS) Rwy 32

NA when local weather not available.
Category D, 800-2¼.

SULPHUR SPRINGS, TX

SULPHUR SPRINGS
MUNI (SLR).....RNAV (GPS) Rwy 1
RNAV (GPS) Rwy 19
VOR-B

NA when local weather not available.

SWEETWATER, TX

AVENGER FLD (SWW).....RNAV (GPS) Rwy 4
RNAV (GPS) Rwy 17
RNAV (GPS) Rwy 22
RNAV (GPS) Rwy 35

NA when local weather not available.
Category D, 800-2¼.

TERRELL, TX

TERRELL MUNI (TRL).....RNAV (GPS) Rwy 18
RNAV (GPS) Rwy 36

NA when local weather not available.

TYLER, TX

TYLER POUNDS
RGNL (TYR).....ILS or LOC Rwy 4¹²³
RNAV (GPS) Rwy 4¹⁴
RNAV (GPS) Rwy 13¹⁴
RNAV (GPS) Rwy 18¹⁴
RNAV (GPS) Rwy 22⁴
RNAV (GPS) Rwy 31⁴
RNAV (GPS) Rwy 36¹⁴
VOR Rwy 4¹⁴
VOR Rwy 31⁴

¹NA when local weather not available.
²NA when control tower closed.
³LOC, Category D, 800-2¼.
⁴Category D, 800-2¼.

VERNON, TX

WILBARGER
COUNTY (F05).....RNAV (GPS) Rwy 2
RNAV (GPS) Rwy 20

NA when local weather not available.

WICHITA FALLS, TX

KICKAPOO
DOWNTOWN (CWC).....RNAV (GPS) Rwy 35
NA when local weather not available.

SHEPPARD AFB/
WICHITA FALLS MUNI (KSPS).....RADAR-1
NA when Sheppard approach control closed.

19 MAY 2022 to 16 JUN 2022

19 MAY 2022 to 16 JUN 2022

22139

M5