

APP CRS **088°**
 Rwy Idg **4204**
 TDZE **818**
 Apt Elev **835**

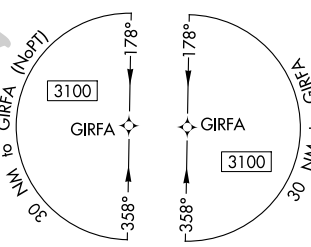
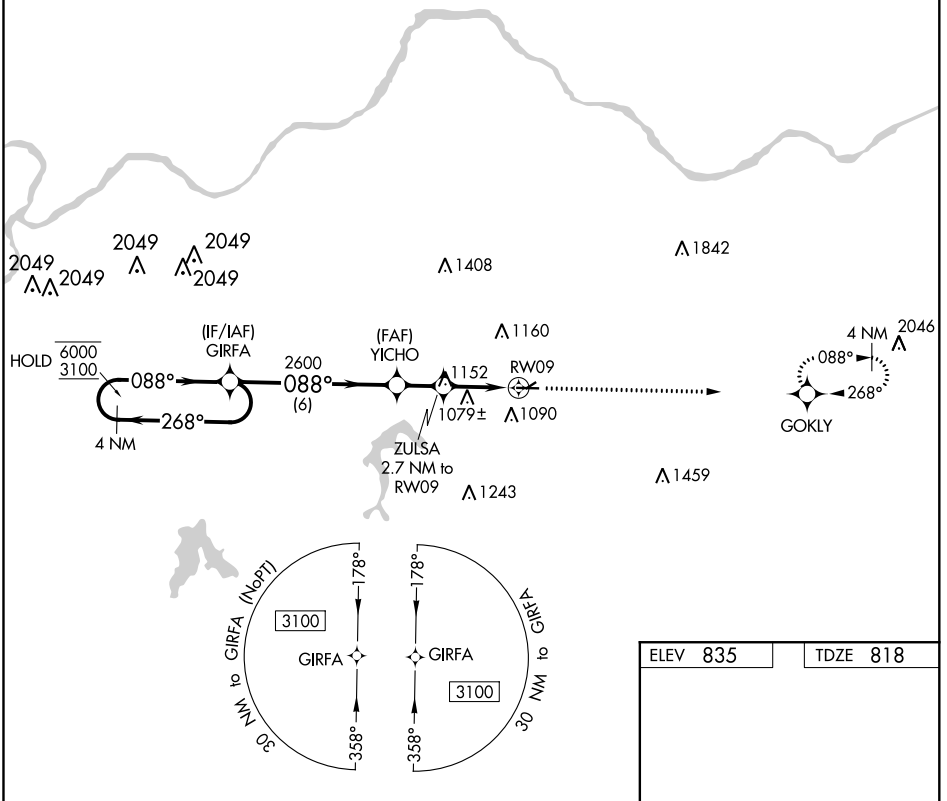
RNAV (GPS) RWY 9

EAST KANSAS CITY (3GV)

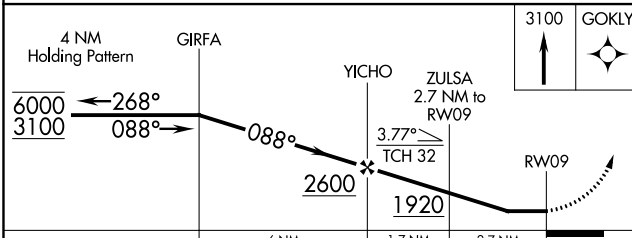
RNP APCH - GPS.
 Procedure NA at night. Rwy 9 helicopter visibility reduction below 1 SM
 NA. Use Charles B Wheeler Downtown altimeter setting.

MISSED APPROACH: Climb to 3100
 direct GOKLY and hold.

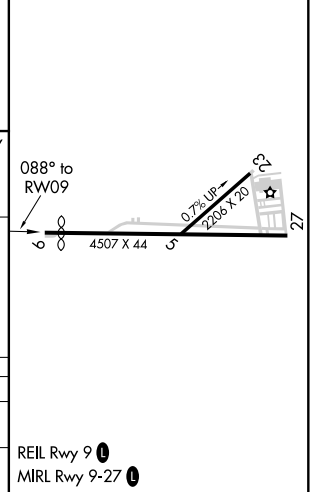
MKC ASOS 120.75	KANSAS CITY APP CON 118.4 307.35	CLNC DEL 121.3	UNICOM 122.8 (CTAF) 0
---------------------------	--	--------------------------	---------------------------------



ELEV 835	TDZE 818
----------	----------



CATEGORY	A	B	C	D
LNAV MDA	1400-1	582 (600-1)		NA
CIRCLING	1460-1	625 (700-1)		NA



REIL Rwy 9 0
 MIRL Rwy 9-27 0

NC-3, 19 MAY 2022 to 16 JUN 2022

NC-3, 19 MAY 2022 to 16 JUN 2022