

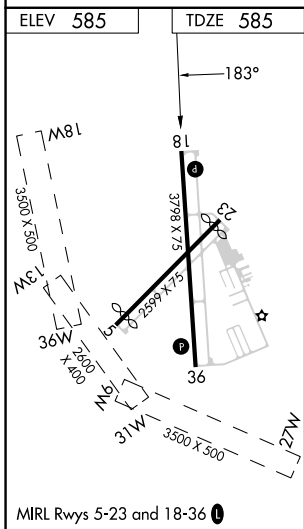
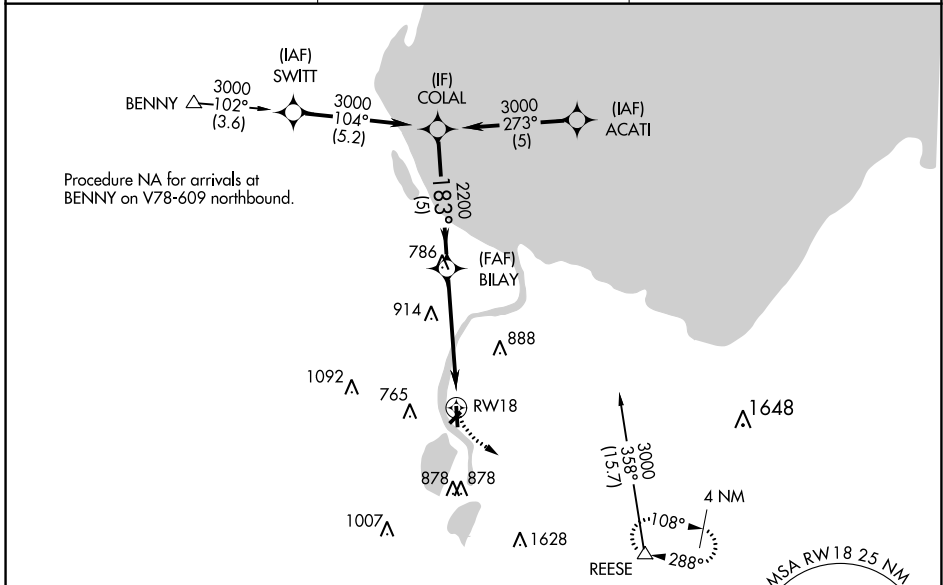
APP CRS	Rwy Idg	3798
183°	TDZE	585
	Apt Elev	585

RNAV (GPS) RWY 18

JAMES CLEMENTS MUNI (3CM)

RNP APCH.	<p>MISSED APPROACH: Climbing left turn to 3000 direct REESE and hold.</p>
<p>▼ Circling NA to Rwys 18W, 36W, 13W, 31W, 9W and 27W. Circling NA southeast of Rws 23 and 36. Rwy 18 helicopter visibility reduction below 1 SM NA. Use Saginaw County H W Browne altimeter setting. Straight-in Rwy 18 NA at night, Circling Rwy 18, 23, 36 NA at night.</p>	

HYX AWOS-3PT 118.325	GREAT LAKES APP CON ★ 120.95 235.625	UNICOM 122.725 (CTAF) ①
--------------------------------	------------------------------------------------	-----------------------------------



ELEV 585	TDZE 585	<p>COLAL VGSi and descent angles not coincident (VGSi Angle 4.00/TCH 27).</p>	
		3000	REESE
<p>5 NM</p>		5 NM	
CATEGORY	A	B	C
LNAV MDA	1260-1	675 (700-1)	1260-2 675 (700-2)
CIRCLING	1260-1	675 (700-1)	1260-2 675 (700-2)
			D
			NA

EC-1, 22 FEB 2024 to 21 MAR 2024

EC-1, 22 FEB 2024 to 21 MAR 2024