

WAAS CH 63027 W36A	APP CRS 360°	Rwy Idg TDZE 1324 Apt Elev 1328	4201
--	------------------------	---	-------------

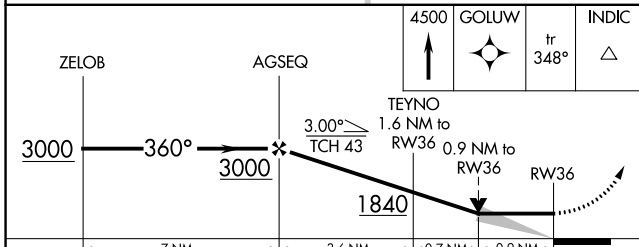
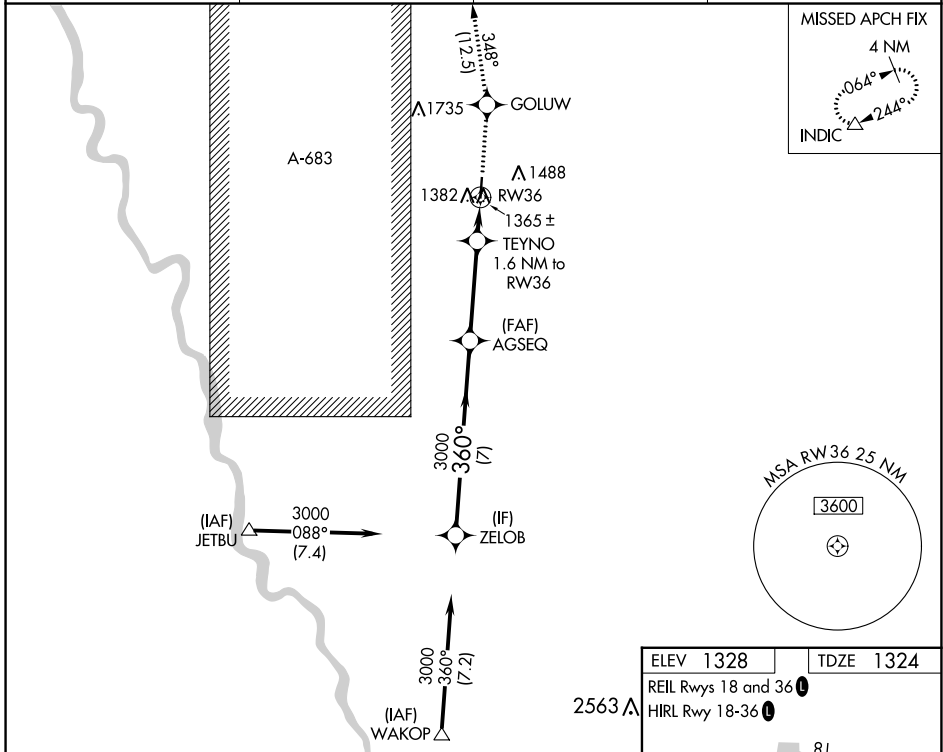
RNAV (GPS) RWY 36

AUGUSTA MUNI (3AU)

⚠ DME/DME RNP-0.3 NA. VDP NA with Colonel James Jabara altimeter setting. When local altimeter setting not received, use Colonel James Jabara altimeter setting and increase all MDA 40 feet, and increase LP and LNAV Cat C visibility 1/8 mile.

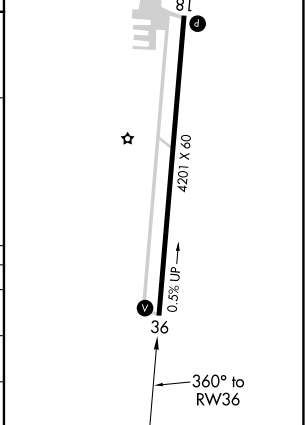
⚠ MISSED APPROACH: Climb to 4500 direct GOLUW and on track 348° to INDIC and hold.

AWOS-3P 124.175	WICHITA APP CON 134.8 269.1	CLNC DEL 125.0	UNICOM 122.8 (CTAF) 0
---------------------------	---------------------------------------	--------------------------	---------------------------------



CATEGORY	A	B	C	D
LP MDA	1620-1	296 (300-1)		NA
LNAV MDA	1700-1	376 (400-1)		NA
C CIRCLING	1760-1 432 (500-1)	1840-1 512 (600-1)	1840-1½ 512 (600-1½)	NA

ELEV 1328	TDZE 1324
REIL Rws 18 and 36	
HIRL Rwy 18-36	



NC-2, 22 FEB 2024 to 21 MAR 2024

NC-2, 22 FEB 2024 to 21 MAR 2024

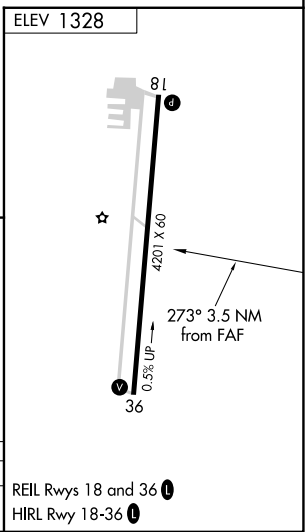
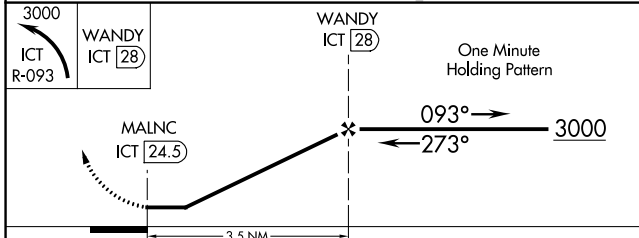
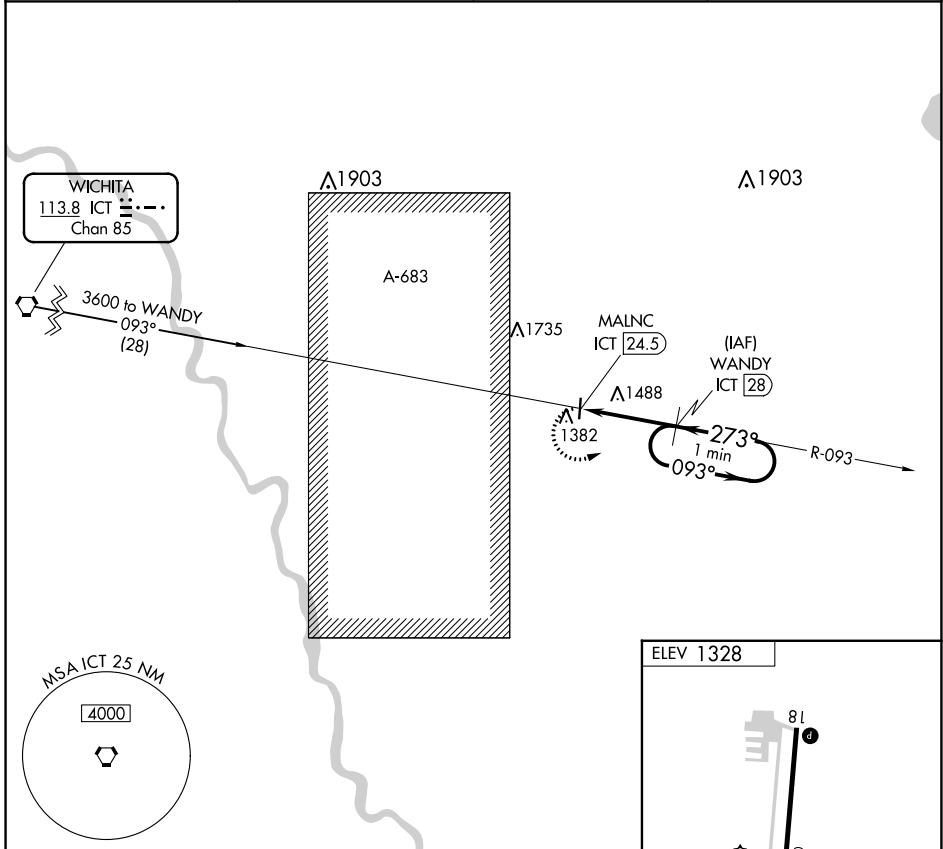
VORTAC ICT 113.8 Chan 85	APP CRS 273°	Rwy Idg TDZE Apt Elev 1328	N/A N/A
--	------------------------	--	--------------------------

VOR/DME-A
AUGUSTA MUNI (3AU)

⚠ When local altimeter setting not received, use Colonel James Jabara altimeter setting and increase all MDA 40 feet.

MISSED APPROACH: Climbing left turn to 3000 on ICT VORTAC R-093 to WANDY/28 DME and hold, continue climb-in-hold to 3000.

AWOS-3P 124.175	WICHITA APP CON 134.8 269.1	CLNC DEL 125.0	UNICOM 122.8 (CTAF)
---------------------------	---------------------------------------	--------------------------	-------------------------------



CATEGORY	A	B	C	D
C CIRCLING	1760-1 432 (500-1)	1840-1 512 (600-1)	1840-1½ 512 (600-1½)	NA

NC-2, 22 FEB 2024 to 21 MAR 2024

NC-2, 22 FEB 2024 to 21 MAR 2024