

WAAS CH 77535 W23A	APP CRS 233°	Rwy Idg TDZE Apt Elev	3508 610 610
--	------------------------	-----------------------------	---

RNAV (GPS) RWY 23

UNION COUNTY, TROY SHELTON FIELD (35A)

RNP APCH.

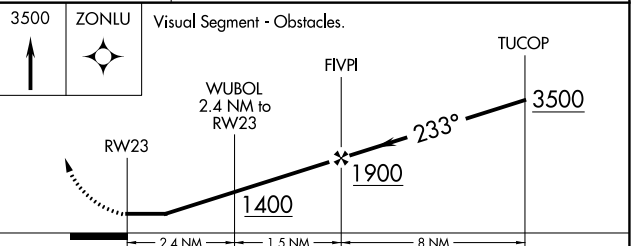
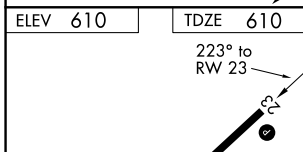
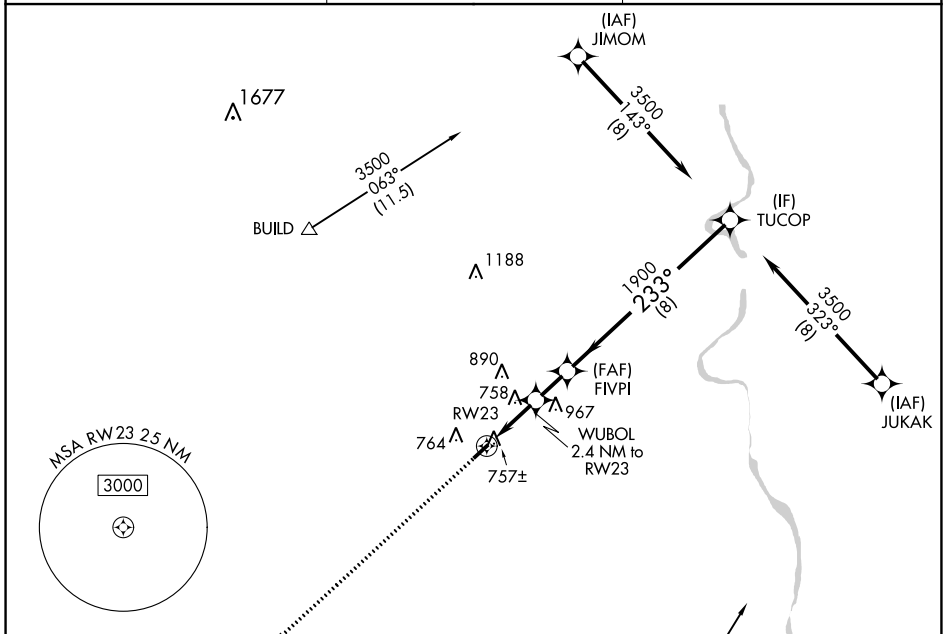
▼ When local altimeter setting not received, use Laurens altimeter setting.
 ▲ NA Procedure NA at night. Rwy 23 helicopter visibility reduction below 1 SM NA.

MISSED APPROACH: Climb to 3500 direct ZONLU and hold.

AWOS-3PT
119.45

GREER APP CON ★
119.4 350.2

UNICOM
122.7 (CTAF) **1**



CATEGORY		A	B	C	D
LP	MDA	1080-1	470 (500-1)		NA
LNAV	MDA	1140-1	530 (600-1)		NA
C	CIRCLING	1180-1	570 (600-1)		NA

MIRL Rwy 5-23 **1**

SE-2, 17 JUN 2021 to 15 JUL 2021

SE-2, 17 JUN 2021 to 15 JUL 2021

WAAS CH 97335 W05A	APP CRS 053°	Rwy Idg 3508 TDZE 604 Apt Elev 610
--	------------------------	---

RNAV (GPS) RWY 5

UNION COUNTY, TROY SHELTON FIELD (35A)

RNP APCH.

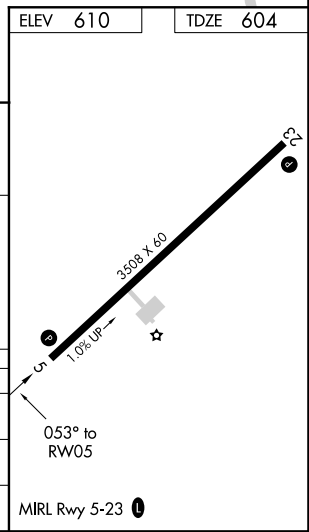
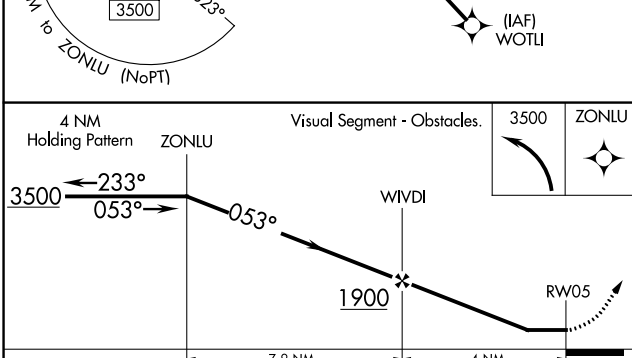
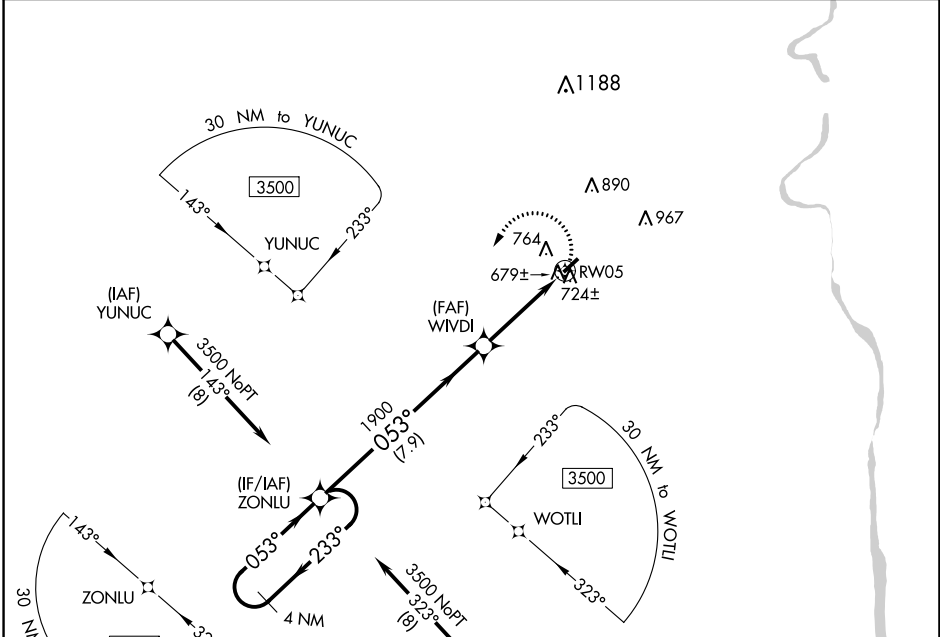
When local altimeter setting not received, use Laurens altimeter setting.
 Procedure NA at night. Rwy 5 helicopter visibility reduction below 1 SM NA.

MISSED APPROACH: Climbing left turn to 3500 direct ZONLU and hold.

AWOS-3PT
119.45

GREER APP CON ★
119.4 350.2

UNICOM
122.7 (CTAF) 0



CATEGORY	A	B	C	D
LP MDA	1000-1	396 (400-1)		NA
LNAV MDA	1040-1	436 (500-1)		NA
C CIRCLING	1180-1	570 (600-1)		NA

RNAV (GPS) RWY 5

SE-2, 17 JUN 2021 to 15 JUL 2021

SE-2, 17 JUN 2021 to 15 JUL 2021