

APP CRS	Rwy Idg	4466
105°	TDZE	380
	Apt Elev	393

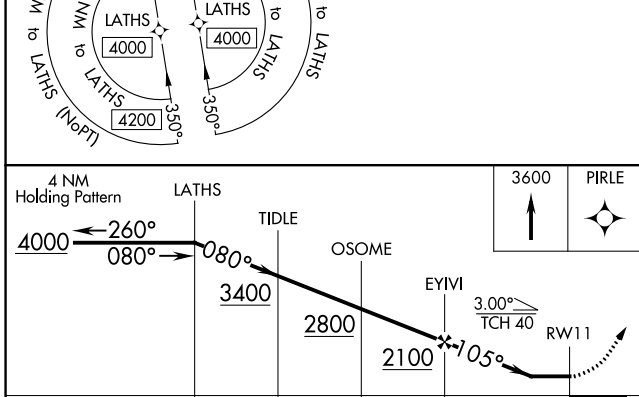
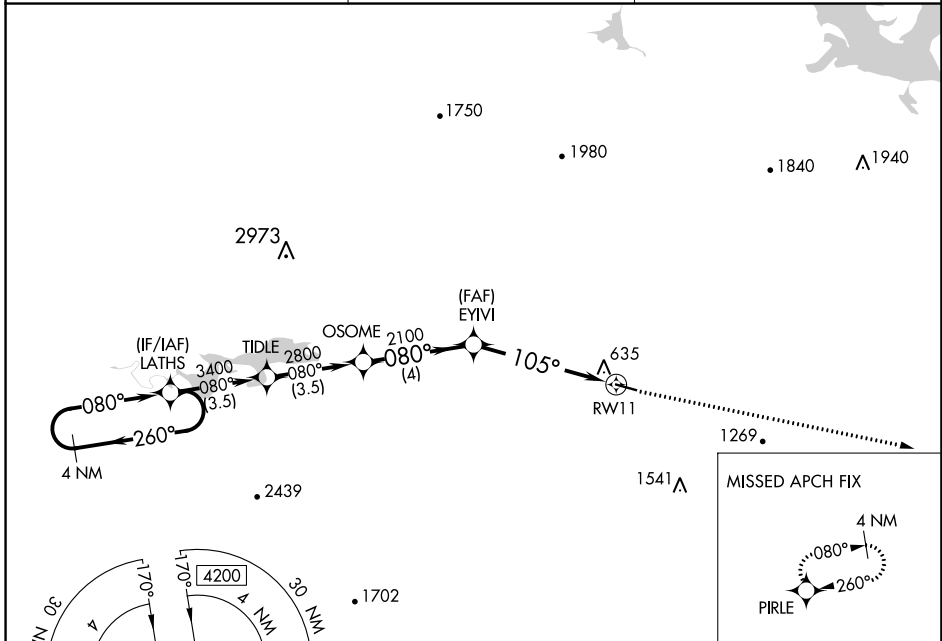
RNAV (GPS) RWY 11

DANVILLE MUNI (32A)

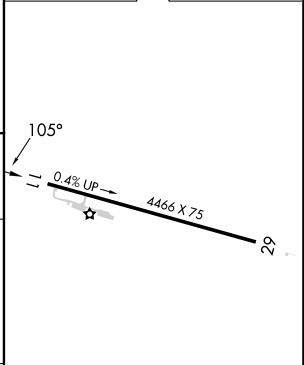
NA Circling NA for Cat D south of Rwy 11-29. DME/DME RNP-0.3 NA.
 Procedure NA at night. Helicopter visibility reduction below 1 SM NA.
 Use Russellville Rgnl altimeter setting, when not received procedure NA.

MISSED APPROACH:
 Climb to 3600 direct PIRLE and hold.

RUE ASOS 132.475	MEMPHIS CENTER 128.475 377.15	CTAF 122.90
----------------------------	---	-----------------------



ELEV 393	TDZE 380
----------	----------



CATEGORY	A	B	C	D
LNNAV MDA	940-1	560 (600-1)	940-1½	560 (600-1½)
CIRCLING	1040-1 647 (700-1)	1060-1 667 (700-1)	1060-1¾ 667 (700-1¾)	1480-3 1087 (1100-3)

SC-1, 22 FEB 2024 to 21 MAR 2024

SC-1, 22 FEB 2024 to 21 MAR 2024