

WAAS CH <b>56541</b> <b>W16A</b>	APP CRS <b>167°</b>	Rwy Idg TDZE Apt Elev	<b>4201</b> <b>4132</b> <b>4138</b>
--	------------------------	-----------------------------	---

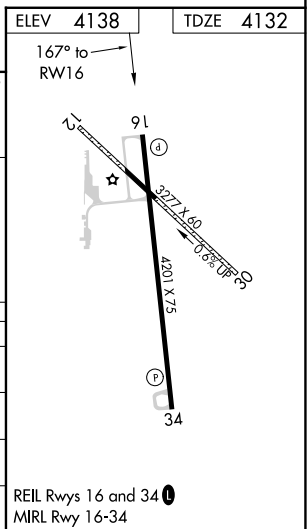
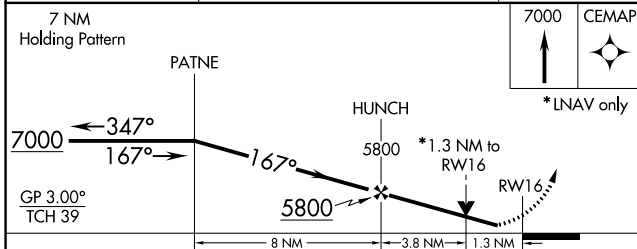
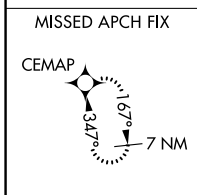
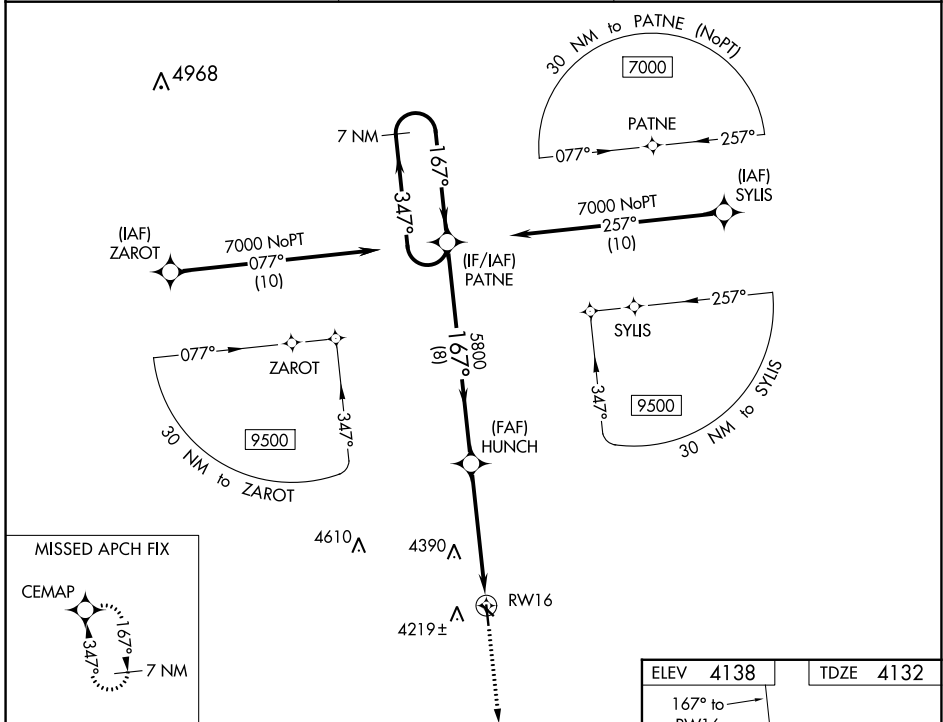
# RNAV (GPS) RWY 16

YUMA MUNI (2V6)

**⚠** Circling NA to Rwy's 12 and 30. For uncompensated Baro-VNAV systems, LNAV/VNAV NA below -23°C (-9°F) or above 54°C (130°F). Rwy 16 helicopter visibility reduction below ¼ SM NA. DME/DME RNP-0.3 NA.

MISSED APPROACH: Climb to 7000 direct CEMAP and hold.

AWOS-3 <b>135.375</b>	DENVER CENTER <b>133.95 317.55</b>	UNICOM <b>122.8 (CTAF) 1</b>
--------------------------	---------------------------------------	---------------------------------



CATEGORY	A	B	C	D
LPV DA	4382-1	250 (300-1)		NA
LNAV/VNAV DA	4452-1	320 (400-1)		NA
LNAV MDA	4580-1	448 (500-1)	4580-1⅜ 448 (500-1⅜)	NA
<b>C</b> CIRCLING	4620-1 482 (500-1)	4640-1 502 (600-1)	4700-1½ 562 (600-1½)	NA

WAAS CH <b>61241</b> <b>W34A</b>	APP CRS <b>347°</b>	Rwy Idg <b>4201</b> TDZE <b>4133</b> Apt Elev <b>4138</b>
--	------------------------	---

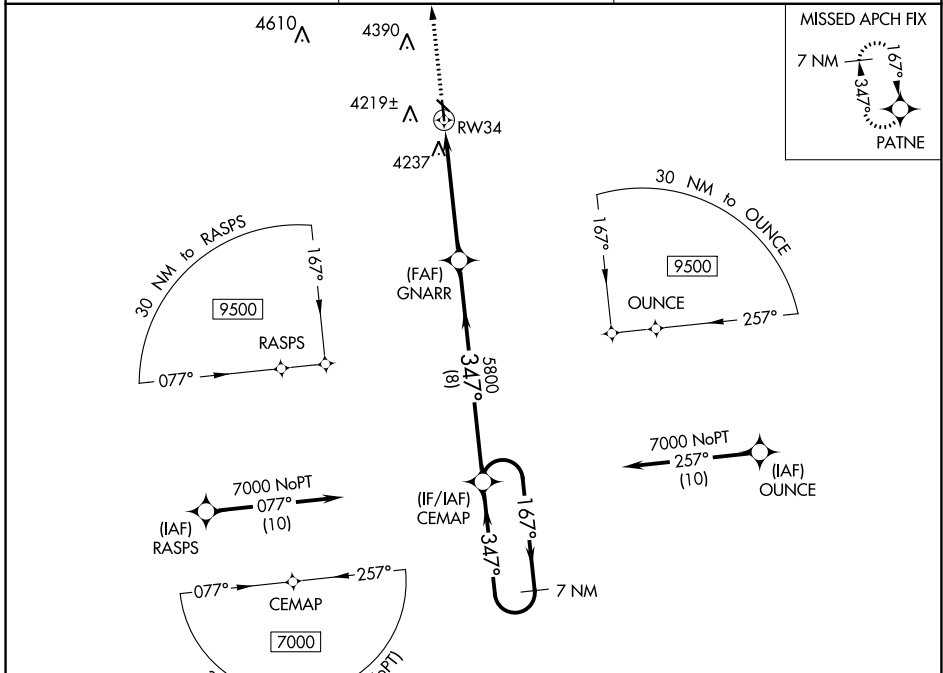
# RNAV (GPS) RWY 34

YUMA MUNI (2V6)

**▼** Circling NA to Rws 12 and 30. For uncompensated Baro-VNAV Systems, LNAV/VNAV NA below -23°C (-9°F) or above 54°C (130°F), DME/DME RNP-0.3 NA.

MISSED APPROACH: Climb to 7000 direct PATNE and hold.

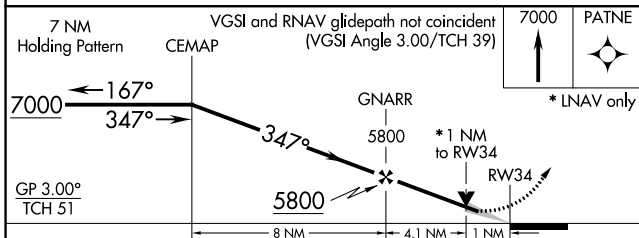
AWOS-3 <b>135.375</b>	DENVER CENTER <b>133.95 317.55</b>	UNICOM <b>122.8 (CTAF)</b>
--------------------------	---------------------------------------	-------------------------------



SW-1, 22 FEB 2024 to 21 MAR 2024

SW-1, 22 FEB 2024 to 21 MAR 2024

▲4811±	ELEV 4138	TDZE 4133
--------	-----------	-----------



CATEGORY	A	B	C	D
LPV DA	4333-1	200 (200-1)		NA
LNAV/VNAV DA	4383-1	250 (300-1)		NA
LNAV MDA	4500-1	367 (400-1)		NA
<b>C</b> CIRCLING	4620-1 482 (500-1)	4640-1 502 (600-1)	4700-1½ 562 (600-1½)	NA

