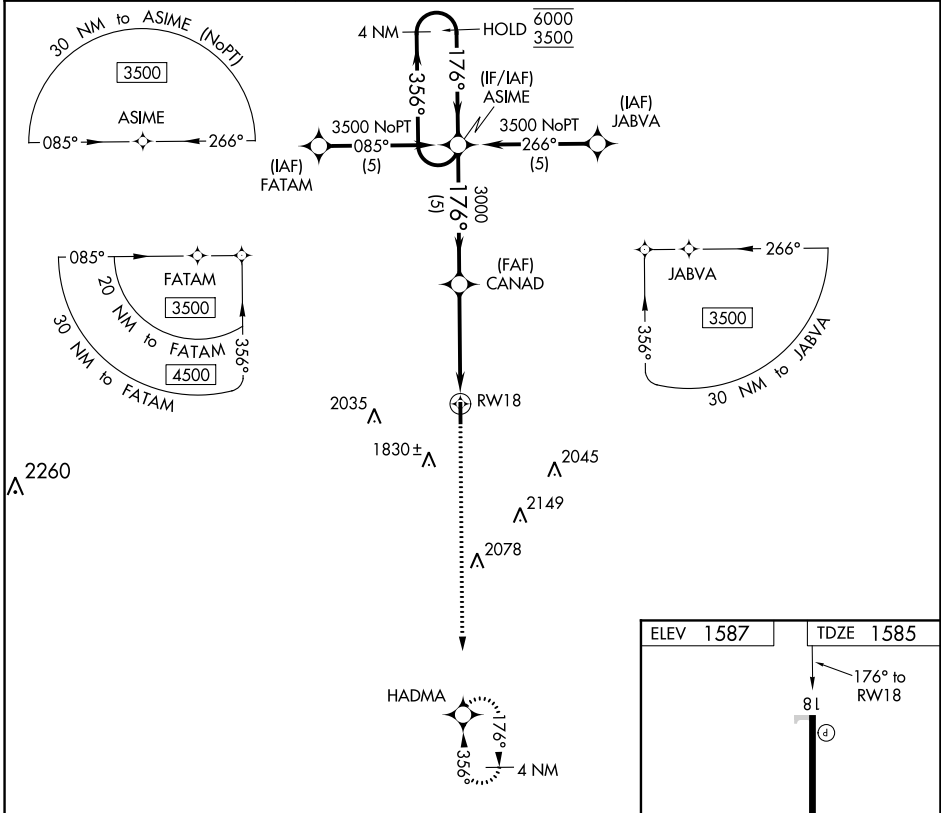


APP CRS <b>176°</b>	Rwy Idg TDZE Apt Elev	<b>4001</b> <b>1585</b> <b>1587</b>
------------------------	-----------------------------	---

# RNAV (GPS) RWY 18

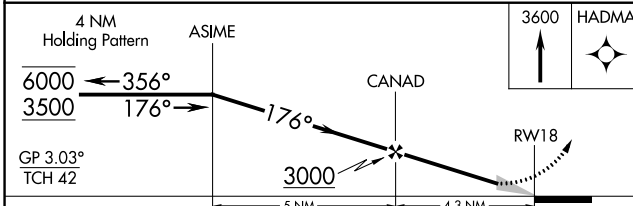
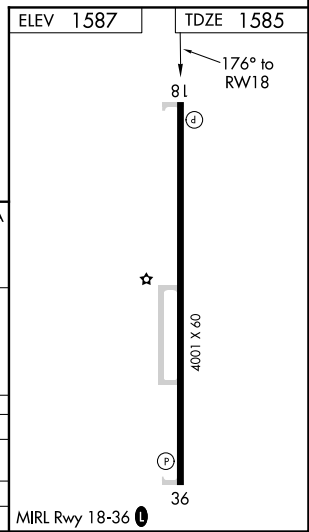
HINTON MUNI (208)

RNP APCH-GPS.		MISSED APPROACH: Climb to 3600 direct HADMA and hold.
Baro-VNAV NA. Use Weatherford altimeter setting.		
OJA AWOS-3PT <b>118.575</b>	FORT WORTH CENTER <b>128.4 269.37</b>	UNICOM <b>123.05 (CTAF)</b>



SC-1, 19 MAY 2022 to 16 JUN 2022

SC-1, 19 MAY 2022 to 16 JUN 2022



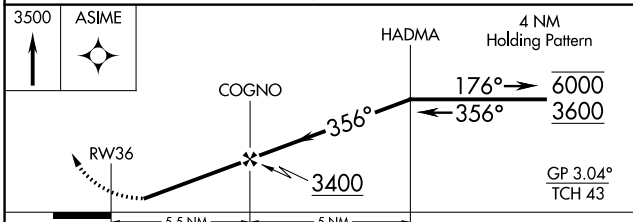
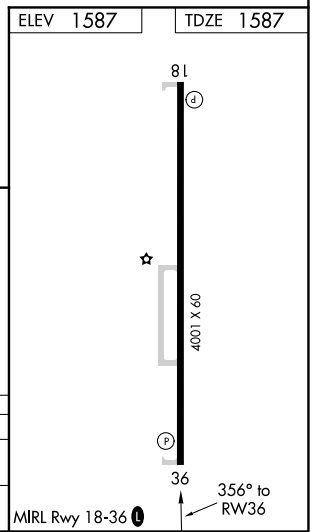
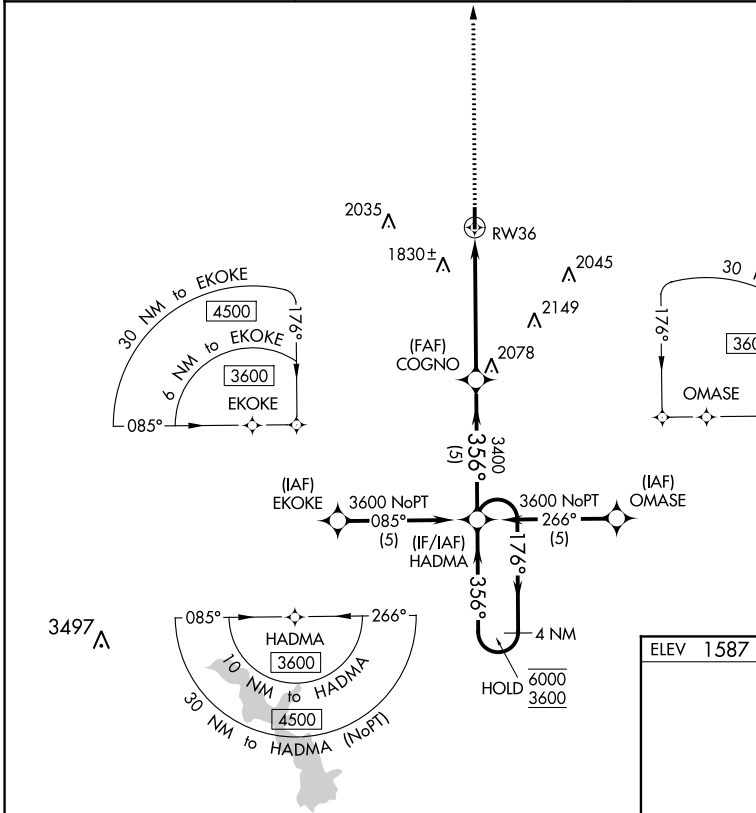
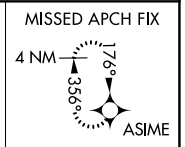
CATEGORY	A	B	C	D
LNAV/VNAV DA	2001-1 1/8	416 (500-1 1/8)		NA
LNAV MDA	2060-1	475 (500-1)		NA
CIRCLING	2200-1	613 (700-1)		NA

APP CRS	Rwy Idg	<b>4001</b>
<b>356°</b>	TDZE	<b>1587</b>
	Apt Elev	<b>1587</b>

# RNAV (GPS) RWY 36

HINTON MUNI (208)

RNP APCH-GPS.		MISSED APPROACH: Climb to 3500 direct ASIME and hold.
<b>▽</b> <b>△</b> NA	Rwy 36 helicopter visibility reduction below 3/4 SM NA. Baro-VNAV NA. Use Weatherford altimeter setting.	
OJA AWOS-3PT <b>118.575</b>	FORT WORTH CENTER <b>128.4 269.37</b>	UNICOM <b>123.05</b> (CTAF) <b>0</b>



CATEGORY	A	B	C	D
LNAV/VNAV	DA 2211-1 3/4	624 (700-1 3/4)	NA	
LNAV MDA	2220-1	633 (700-1)	NA	

SC-1, 19 MAY 2022 to 16 JUN 2022

SC-1, 19 MAY 2022 to 16 JUN 2022