

WAAS CH <b>63132</b> <b>W07A</b>	APP CRS <b>074°</b>	Rwy Idg TDZE Apt Elev	<b>4005</b> <b>102</b> <b>103</b>
--	------------------------	-----------------------------	---

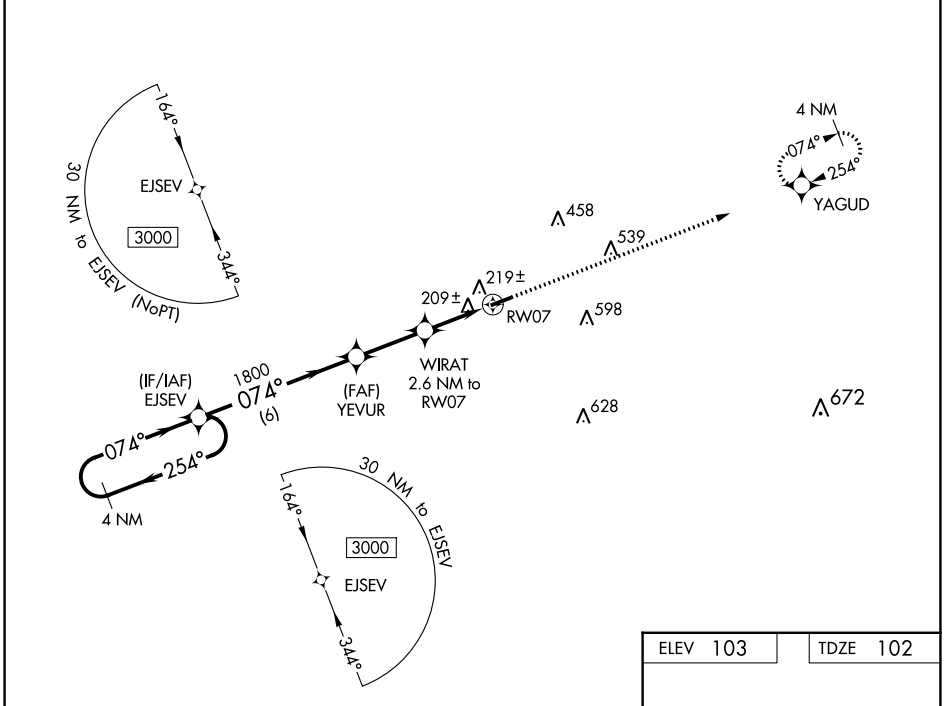
# RNAV (GPS) RWY 7

SUWANNEE COUNTY (24J)

**▽** When local altimeter setting not received, use Perry altimeter setting and increase all MDAs 100 feet. DME/DME RNP-0.3 NA.  
**△ NA** Helicopter visibility reduction below 1 SM NA.  
 Procedure NA at night.

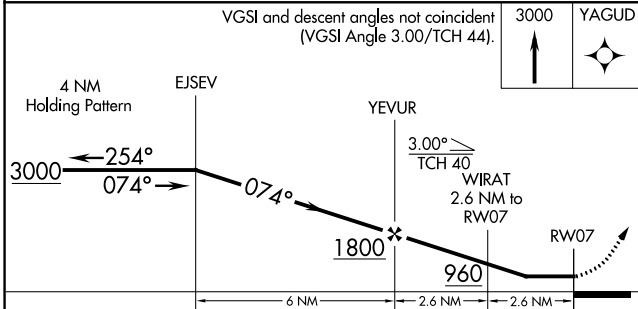
MISSED APPROACH: Climb to 3000 direct YAGUD and hold.

AWOS-3 <b>118.225</b>	JACKSONVILLE CENTER <b>125.375 254.325</b>	UNICOM <b>122.8 (CTAF) 0</b>
--------------------------	---	---------------------------------



SE-3, 22 FEB 2024 to 21 MAR 2024

SE-3, 22 FEB 2024 to 21 MAR 2024



ELEV 103	TDZE 102
----------	----------

REIL Rwy 7 and 25 **0**  
 MRL Rwy 7-25 **0**

CATEGORY	A	B	C	D
LP MDA	460-1	358 (400-1)		NA
LNAV MDA	480-1	378 (400-1)		NA
<b>C</b> CIRCLING	560-1 457 (500-1)	600-1 497 (500-1)		NA