

| | | | |
|--|------------------------|-----------------------------|---|
| WAAS CH 65736 W35A | APP CRS 355° | Rwy Idg TDZE Apt Elev | 3771 1733 1733 |
|--|------------------------|-----------------------------|---|

RNAV (GPS) RWY 35

THOMAS MUNI (104)

Baro-VNAV NA. Use Weatherford altimeter setting; when not received, use Clinton Rgnl altimeter setting. DME/DME RNP-0.3 NA. Night landing: Rwy 17 operational VGSI required, remain on or above VGSI glidepath until threshold. Helicopter visibility reduction below 1 SM NA.

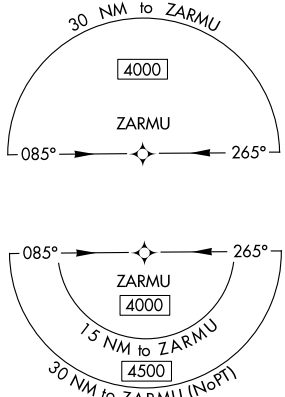
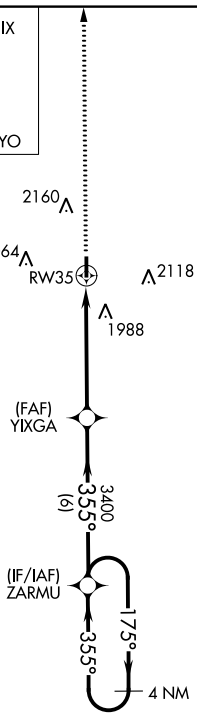
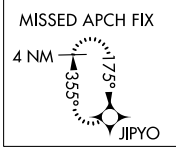
MISSED APPROACH: Climb to 4000 direct JIPYO and hold.

OJA AWOS-3
118.575

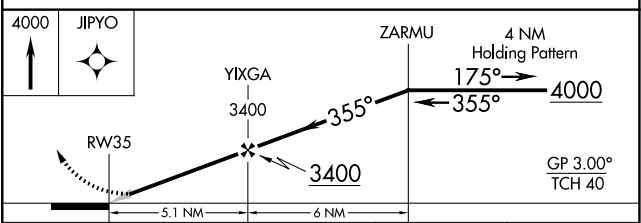
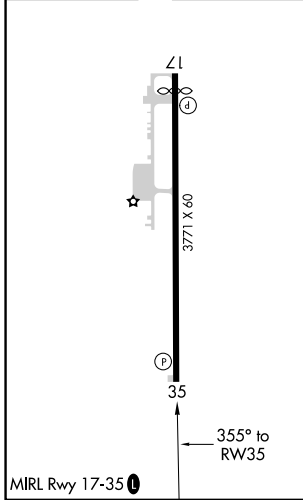
FORT WORTH CENTER
128.4 269.37

CTAF
122.9

A
2479



ELEV 1733 TDZE 1733



| CATEGORY | A | B | C | D |
|-------------------|-----------------------|-----------------------|---|----|
| LPV DA | 2035-1 | 302 (400-1) | | NA |
| LNAV/VNAV | 2035-1 | 302 (400-1) | | NA |
| LNAV MDA | 2220-1 | 487 (500-1) | | NA |
| C CIRCLING | 2280-1 547 (600-1) | 2460-1 727 (800-1) | | NA |

SC-1, 22 FEB 2024 to 21 MAR 2024

SC-1, 22 FEB 2024 to 21 MAR 2024