

COPTER RNAV (GPS) Y RWY 14

MANSFIELD MUNI (1B9)

WAAS CH 50444 W14B	APP CRS 139°	Rwy Idg TDZE 121 Apt Elev 123	2991
----------------------------------------	------------------------	---------------------------------------------------	-------------

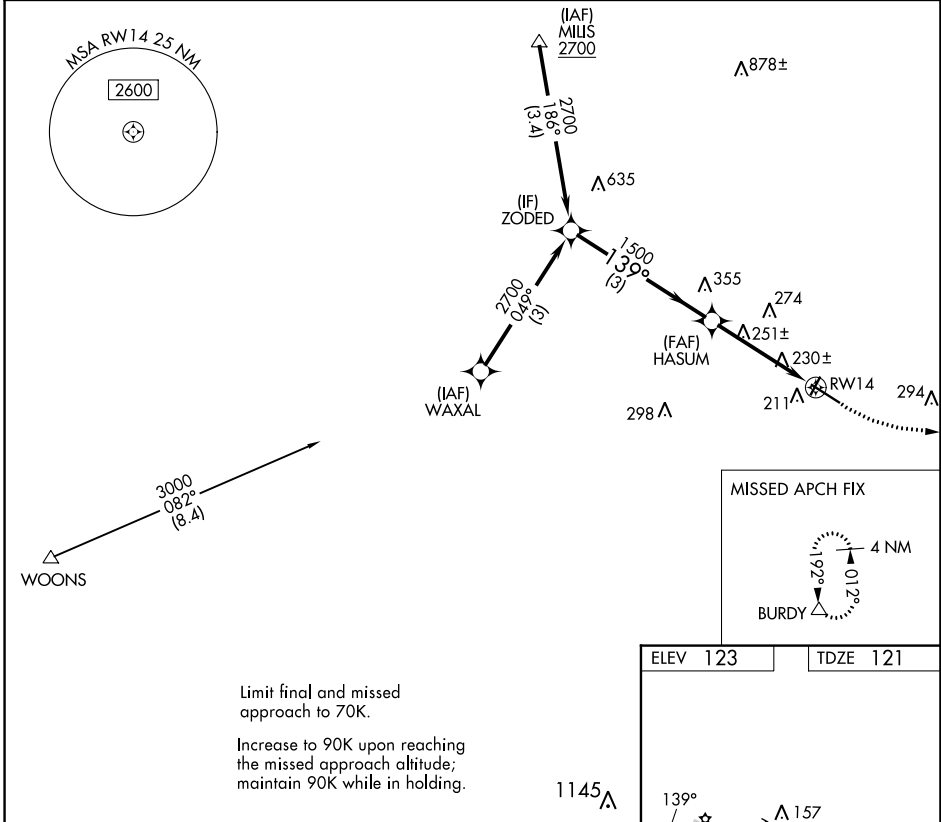
RNP APCH - GPS.
 Procedure NA at night. Use Taunton altimeter setting.

MISSED APPROACH: Climbing left turn to 2000 direct BURDY and hold.

TAN ASOS
132.675

BOSTON APP CON
124.1

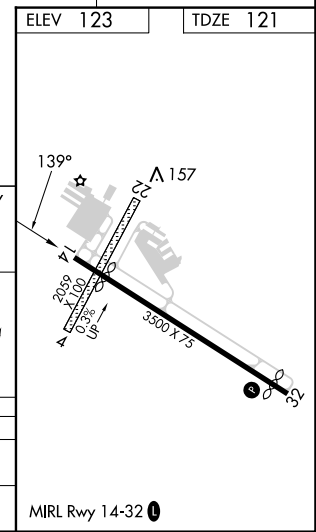
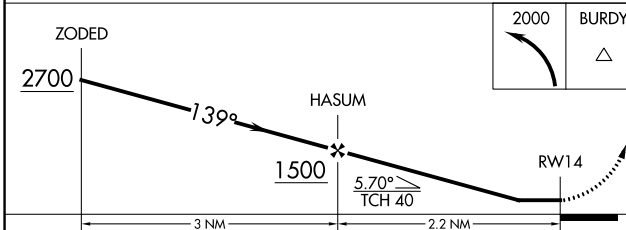
UNICOM
123.0 (CTAF)



NE-1, 22 FEB 2024 to 21 MAR 2024

NE-1, 22 FEB 2024 to 21 MAR 2024

Limit final and missed approach to 70K.
 Increase to 90K upon reaching the missed approach altitude; maintain 90K while in holding.



CATEGORY		COPTER	
LP	MDA	520-1	399 (400-1)
LNAV	MDA	580-1	459 (500-1)

MIRL Rwy 14-32

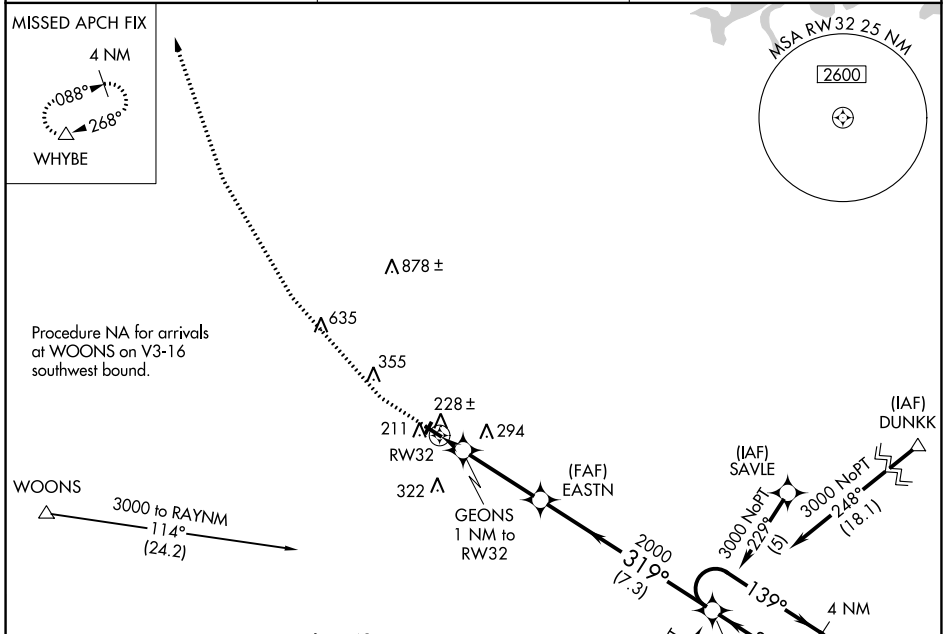
WAAS CH 97644 W32A	APP CRS 319°	Rwy Idg TDZE Apt Elev	3263 121 123
----------------------------------------	------------------------	-----------------------------	-----------------------------------------

RNAV (GPS) RWY 32

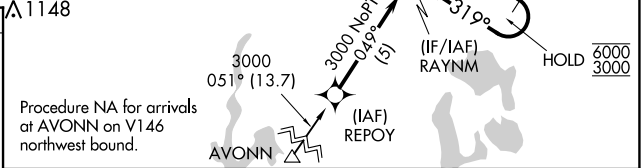
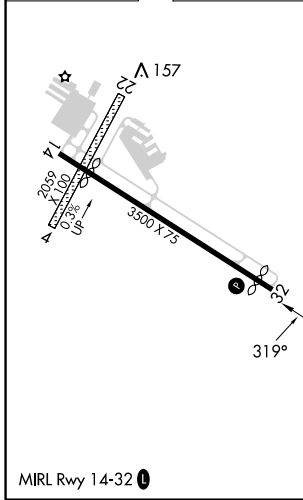
MANSFIELD MUNI (1B9)

RNP APCH - GPS.		MISSED APPROACH: Climb to 700 then climbing right turn to 3000 direct WHYBE and hold.
NA	Circling NA to Rwy 4 and 22. Procedure NA at night. Rwy 32 helicopter visibility reduction below 1 SM NA. Use Taunton altimeter setting.	

TAN ASOS 132.675	BOSTON APP CON 124.1	UNICOM 123.0 (CTAF) 0
----------------------------	--------------------------------	---------------------------------



ELEV 123	TDZE 121
----------	----------



CATEGORY	A	B	C	D
LPV DA	452-1	331 (400-1)		NA
LNAV MDA	520-1	399 (400-1)		NA
CIRCLING	600-1 477 (500-1)	640-1 517 (600-1)		NA

NE-1, 22 FEB 2024 to 21 MAR 2024

NE-1, 22 FEB 2024 to 21 MAR 2024

WAAS CH 90444 W14A	APP CRS 139°	Rwy Idg TDZE Apt Elev	2991 121 123
----------------------------------------	------------------------	-----------------------------	-----------------------------------------

RNAV (GPS) Z RWY 14

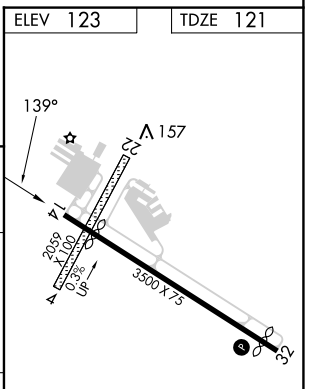
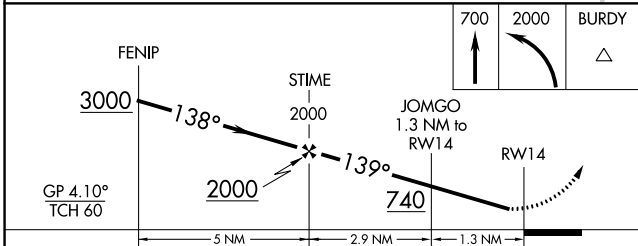
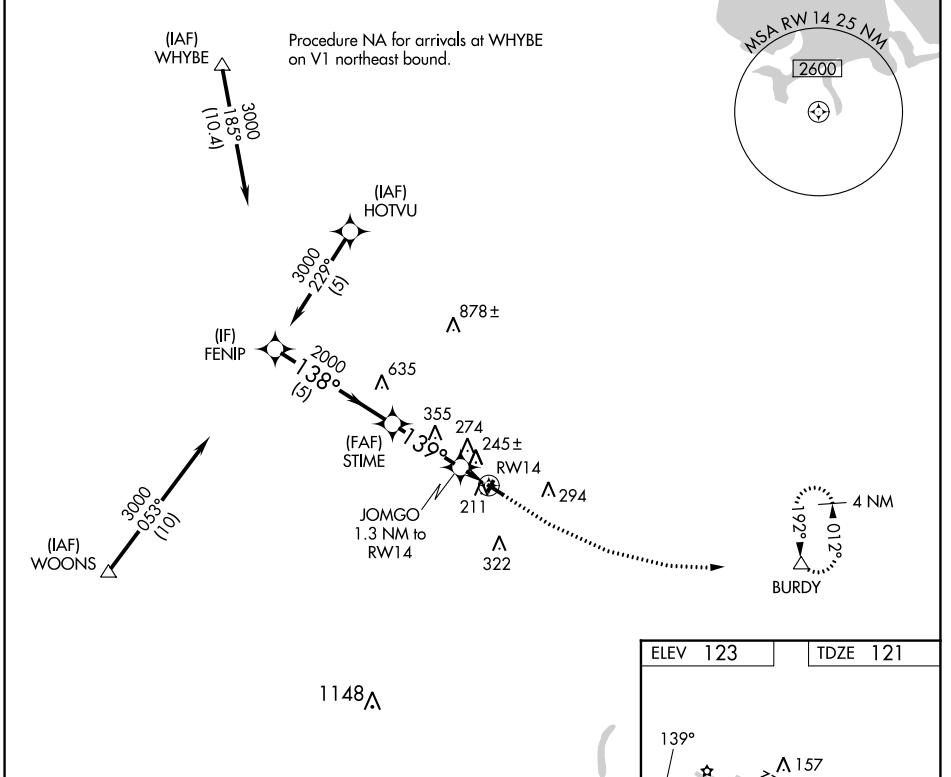
MANSFIELD MUNI (1B9)

RNP APCH - GPS.

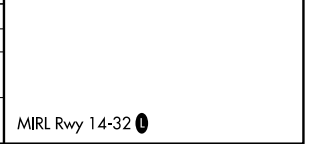
⚠ Circling NA to Rwys 4 and 22. Procedure NA at night. Rwy 14 helicopter visibility reduction below 1 SM NA. Use Taunton altimeter setting.

MISSED APPROACH: Climb to 700 then climbing left turn to 2000 direct BURDY and hold.

TAN ASOS 132.675	BOSTON APP CON 124.1	UNICOM 123.0 (CTAF)
----------------------------	--------------------------------	-------------------------------



CATEGORY	A	B	C	D
LPV DA	523-1 1/8	402 (400-1 1/8)		NA
LNAV MDA	540-1	419 (500-1)		NA
C CIRCLING	600-1 477 (500-1)	640-1 517 (600-1)		NA



NE-1, 22 FEB 2024 to 21 MAR 2024

NE-1, 22 FEB 2024 to 21 MAR 2024