

WAAS CH <b>82033</b> <b>W22A</b>	APP CRS <b>223°</b>	Rwy Idg TDZE Apt Elev	<b>3895</b> <b>1003</b> <b>1008</b>
--	------------------------	-----------------------------	---

# RNAV (GPS) RWY 22

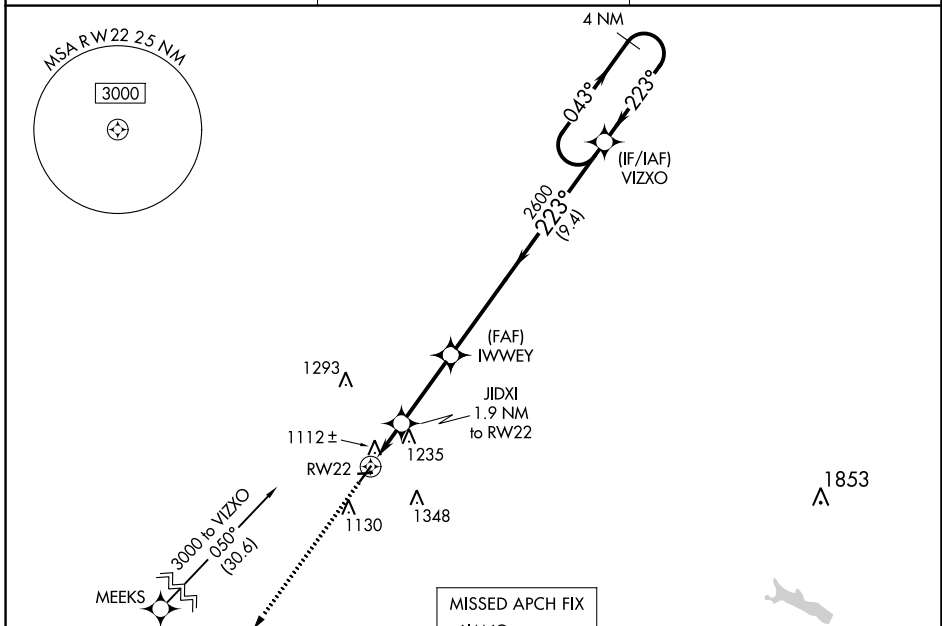
PORT BUCYRUS-CRAWFORD COUNTY (17G)

RNP APCH.

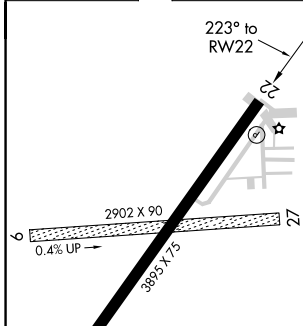
**NA** Circling NA to Rwy 9 and 27. Rwy 22 helicopter visibility reduction below 1 SM NA. Straight-in and Circling Rwy 22 NA at night. When local altimeter setting not received, use Mansfield altimeter setting; increase all MDA 100 feet and visibility Cat C 3/8 SM.

MISSED APPROACH: Climb to 3000 direct LIANG and hold.

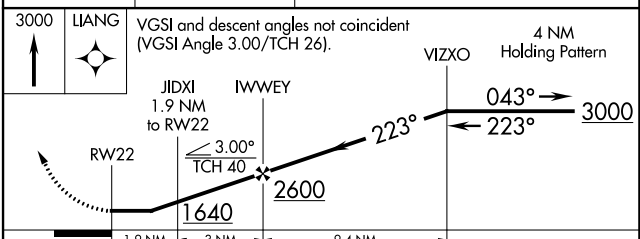
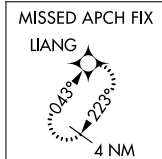
AWOS-3 <b>126.625</b>	CLEVELAND APP CON * <b>124.2 360.65</b>	UNICOM <b>122.8 (CTAF)</b>
--------------------------	--	-------------------------------



ELEV 1008	TDZE 1003
-----------	-----------



REIL Rwy 4 and 22	MIRL Rwy 4-22
-------------------	---------------



CATEGORY	A	B	C	D
LP MDA	1380-1 377 (400-1)			NA
LNAV MDA	1500-1	497 (500-1)	1500-1 3/8 497 (500-1 3/8)	NA
<b>C</b> CIRCLING	1500-1 492 (500-1)	1540-1 532 (600-1)	1700-2 692 (700-2)	NA

EC-2, 09 SEP 2021 to 07 OCT 2021

EC-2, 09 SEP 2021 to 07 OCT 2021

APP CRS	Rwy Idg	<b>3619</b>
<b>043°</b>	TDZE	<b>1003</b>
	Apt Elev	<b>1008</b>

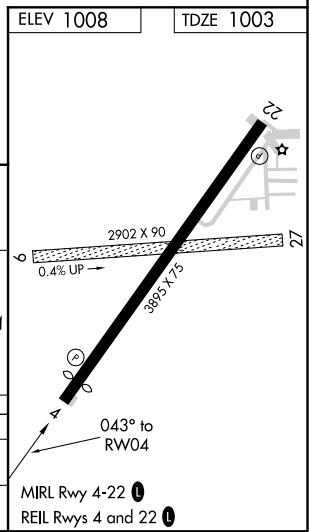
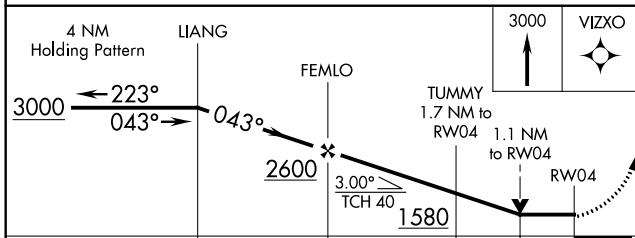
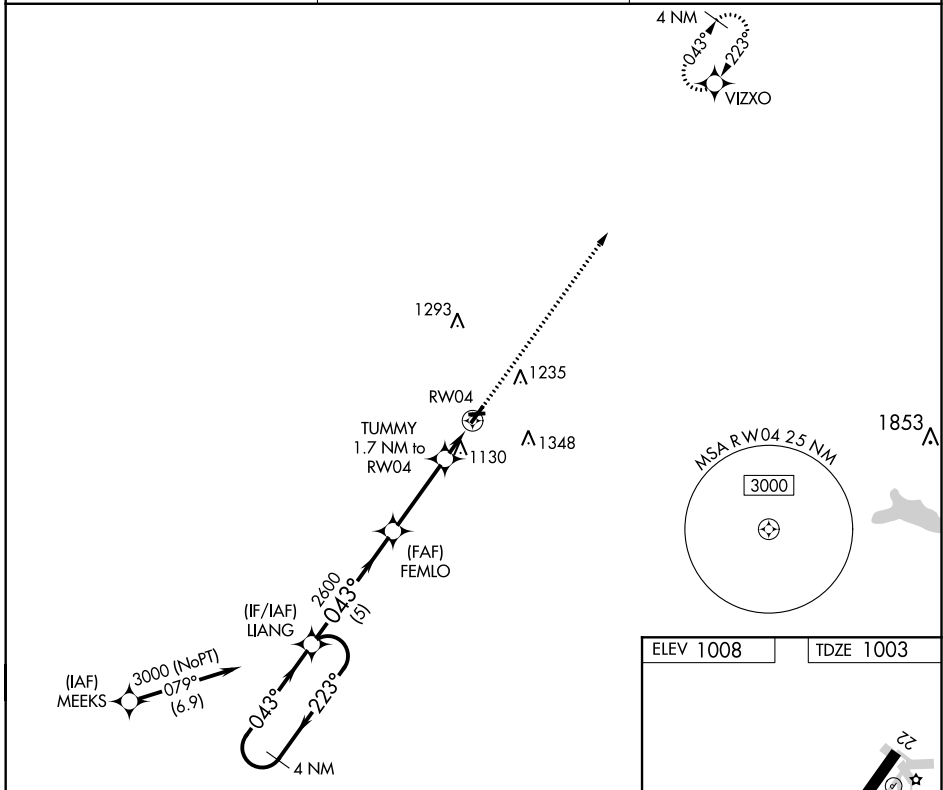
# RNAV (GPS) RWY 4

PORT BUCYRUS-CRAWFORD COUNTY (17G)

RNP APCH. MISSED APPROACH: Climb to 3000 direct VIZXO and hold.

**NA** Circling NA to Rwys 9 and 27. Circling Rwy 22 NA at night. Rwy 4 helicopter visibility reduction below 3/4 SM NA. VDP NA with Mansfield altimeter setting. When local altimeter setting not received, use Mansfield altimeter setting: increase all MDA 100 feet and visibility Cat C 3/8 SM.

AWOS-3 <b>126.625</b>	CLEVELAND APP CON ★ <b>124.2 360.65</b>	UNICOM <b>122.8 (CTAF) 0</b>
--------------------------	--	---------------------------------



CATEGORY	A	B	C	D
LNVA MDA	1380-1		377 (400-1)	NA
<b>C</b> CIRCLING	1500-1 492 (500-1)	1540-1 532 (600-1)	1700-2 692 (700-2)	NA

# RNAV (GPS) RWY 4

EC-2, 09 SEP 2021 to 07 OCT 2021

EC-2, 09 SEP 2021 to 07 OCT 2021

VOR BUD <b>109.8</b>	APP CRS <b>208°</b>	Rwy Idg TDZE Apt Elev	<b>3895</b> <b>1003</b> <b>1008</b>
-------------------------	------------------------	-----------------------------	---

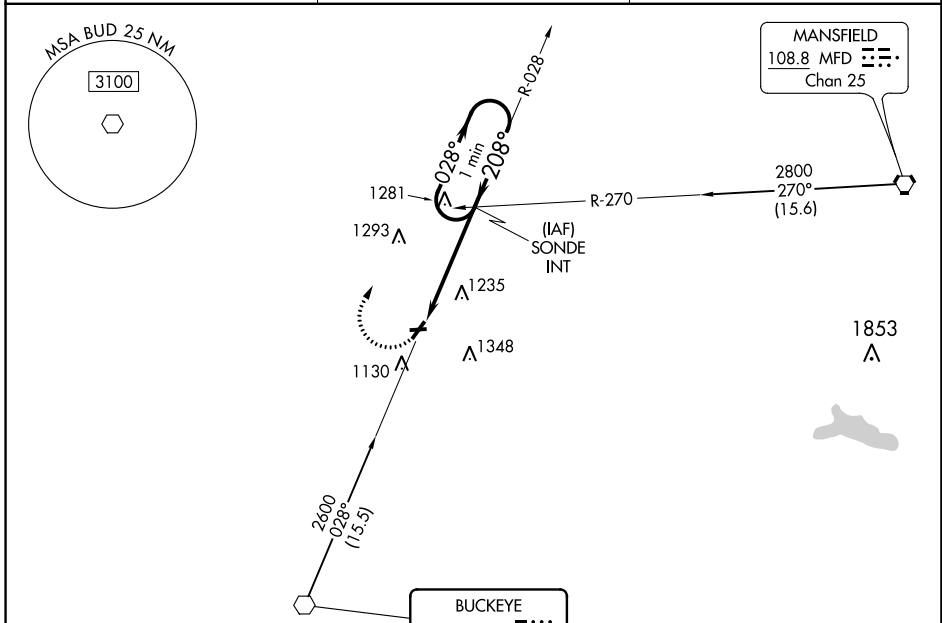
# VOR RWY 22

PORT BUCYRUS-CRAWFORD COUNTY (17G)

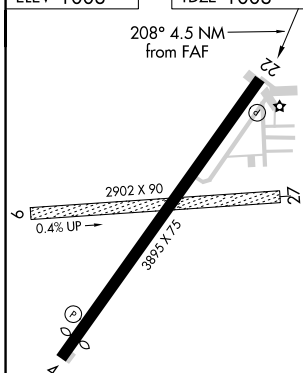
**NA** Circling NA to Rwys 9 and 27. Rwy 22 helicopter visibility reduction below 1 SM NA. Straight-in and Circling Rwy 22 NA at night. When local altimeter setting not received, use Mansfield altimeter setting: increase all MDA 100 feet and visibility Cats B and C ½ SM.

**MISSED APPROACH:** Climbing right turn to 2600 on heading 090° and on BUD VOR R-028 to SONDE INT and hold.

AWOS-3 <b>126.625</b>	CLEVELAND APP CON ★ <b>124.2 360.65</b>	UNICOM <b>122.8 (CTAF) 0</b>
--------------------------	--	---------------------------------



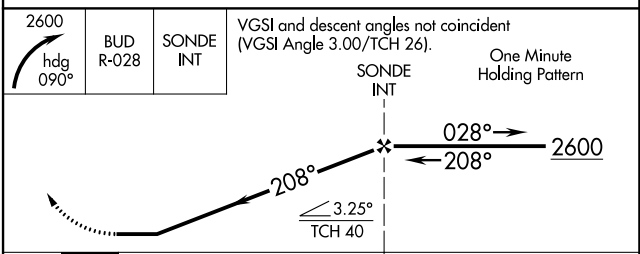
ELEV 1008	TDZE 1003
-----------	-----------



MIRL Rwy 4-22 **0**  
REIL Rwys 4 and 22 **0**

FAF to MAP 4.5 NM

Knots	60	90	120	150	180
Min:Sec	4:30	3:00	2:15	1:48	1:30



CATEGORY	A	B	C	D
S-22	1700-1	697 (700-1)	1700-2 697 (700-2)	NA
<b>0</b> CIRCLING	1700-1	692 (700-1)	1700-2 692 (700-2)	NA

# VOR RWY 22

EC-2, 09 SEP 2021 to 07 OCT 2021

EC-2, 09 SEP 2021 to 07 OCT 2021