

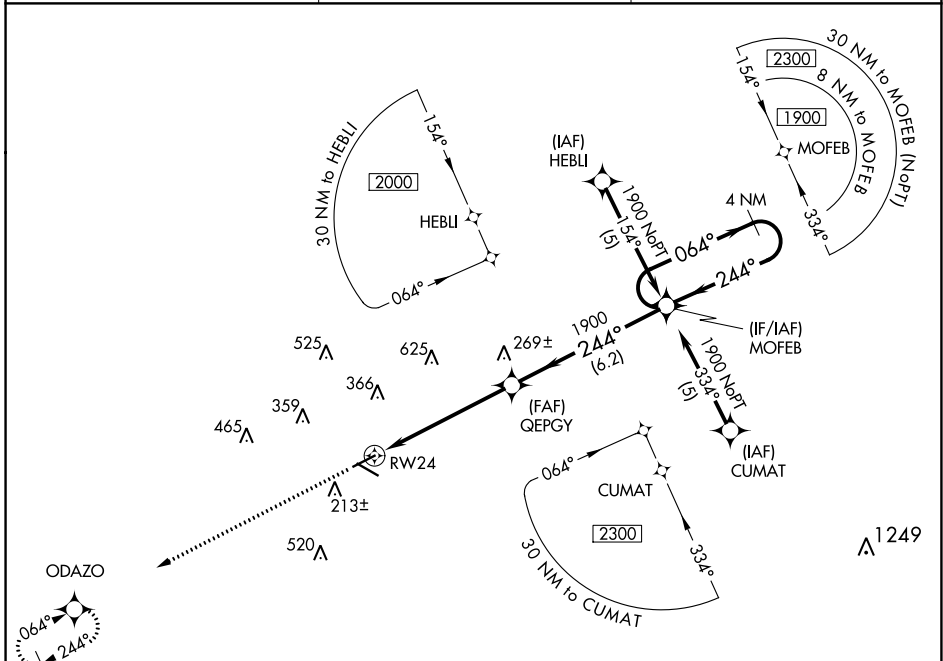
APP CRS	Rwy Idg	5136
244°	TDZE	83
	Apt Elev	99

RNAV (GPS) RWY 24

BREWTON MUNI (12J)

RNP APCH - GPS.		MISSED APPROACH: Climb to 2000 direct ODAZO and hold.
<p>▽ When local altimeter setting not received use Pensacola altimeter setting and increase all MDA 100 feet; increase LNAV Cats C and D visibility ¼ SM. Procedure NA at night.</p> <p>△ NA</p>		

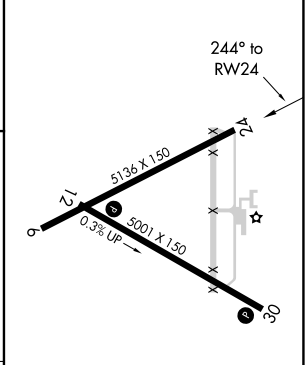
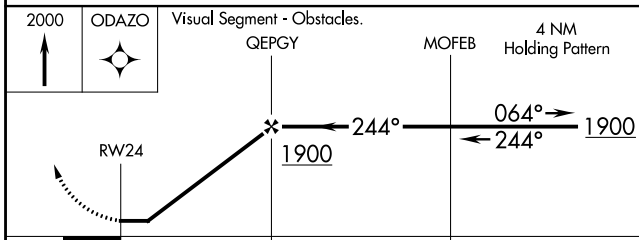
AWOS-3PT 119.325	PENSACOLA APP CON 127.35 291.625	UNICOM 122.725 (CTAF) 0
----------------------------	--	-----------------------------------



SE-4, 22 FEB 2024 to 21 MAR 2024

SE-4, 22 FEB 2024 to 21 MAR 2024

ELEV	99	TDZE	83
------	----	------	----



CATEGORY	A	B	C	D
LNAV MDA	520-1	437 (500-1)	520-1 1/4	437 (500-1 1/4)

MIRL Rwy 12-30 0