

| | | | |
|--|------------------------|---|-------------|
| WAAS CH 81836 W05A | APP CRS 054° | Rwy Idg TDZE 255 Apt Elev 270 | 5500 |
|--|------------------------|---|-------------|

RNAV (GPS) RWY 5

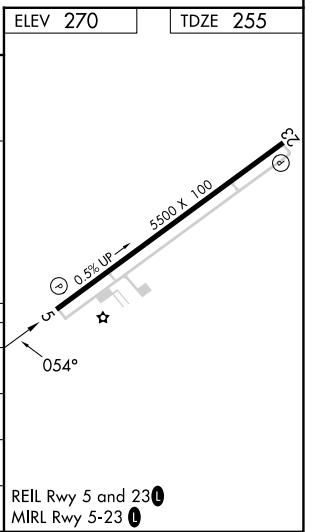
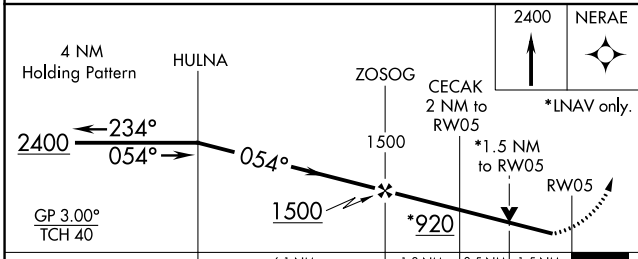
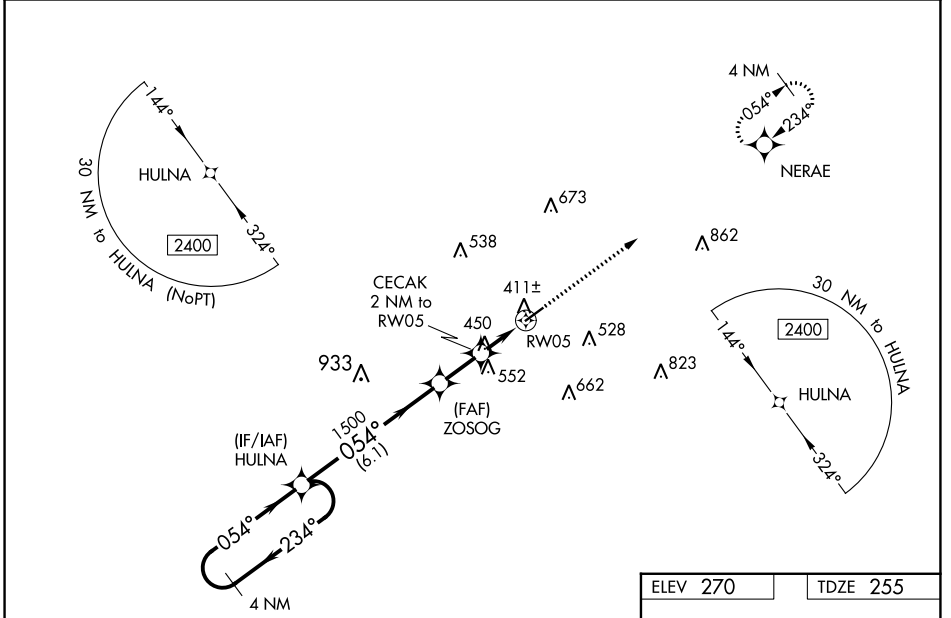
COLUMBIA/MARION COUNTY (ØRØ)

RNP APCH - GPS.

▼ **NA** For uncompensated Baro-VNAV systems, LNAV/VNAV NA below -15°C or above 54°C.
 When local altimeter setting not received, use Hattiesburgh/Laurel Rgnl altimeter setting and increase all DA 66 feet and all MDA 80 feet; increase LPV all Cats visibility 1/8 mile and LNAV/VNAV all Cats and Circling Cat C visibilities 1/4 mile, increase Circling Cat D visibility 1/2 mile, increase LNAV Cat C and D visibility 3/8 mile. VDP and Baro-VNAV NA when using Hattiesburgh/Laurel Rgnl altimeter setting. Rwy 5 helicopter visibility reduction below 3/4 SM NA.

MISSED APPROACH:
Climb to 2400 direct NERAE and hold.

| | | |
|----------------------------|--------------------------------------|---------------------------------|
| AWOS-3PT 120.675 | HOUSTON CENTER 126.8 327.8 | UNICOM 122.8 (CTAF) Ø |
|----------------------------|--------------------------------------|---------------------------------|



| CATEGORY | A | B | C | D |
|-------------------|----------------------|----------------------|------------------------------|-------------------------------|
| LPV DA | 505-7/8 | | 250 (300-7/8) | |
| LNAV/VNAV DA | 743-1 5/8 | | 488 (500-1 5/8) | |
| LNAV MDA | 760-1 | 505 (500-1) | 760-1 3/8 | 505 (500-1 3/8) |
| C CIRCLING | 760-1 490 (500-1) | 820-1 550 (600-1) | 920-1 3/4 650 (700-1 3/4) | 1000-2 1/4 730 (800-2 1/4) |

SC-4, 22 FEB 2024 to 21 MAR 2024

SC-4, 22 FEB 2024 to 21 MAR 2024