

WAAS CH <b>48839</b> <b>W26A</b>	APP CRS <b>262°</b>	Rwy Idg <b>4007</b> TDZE <b>575</b> Apt Elev <b>585</b>
--	------------------------	---

# RNAV (GPS) RWY 26

CHILTON COUNTY (Ø2A)

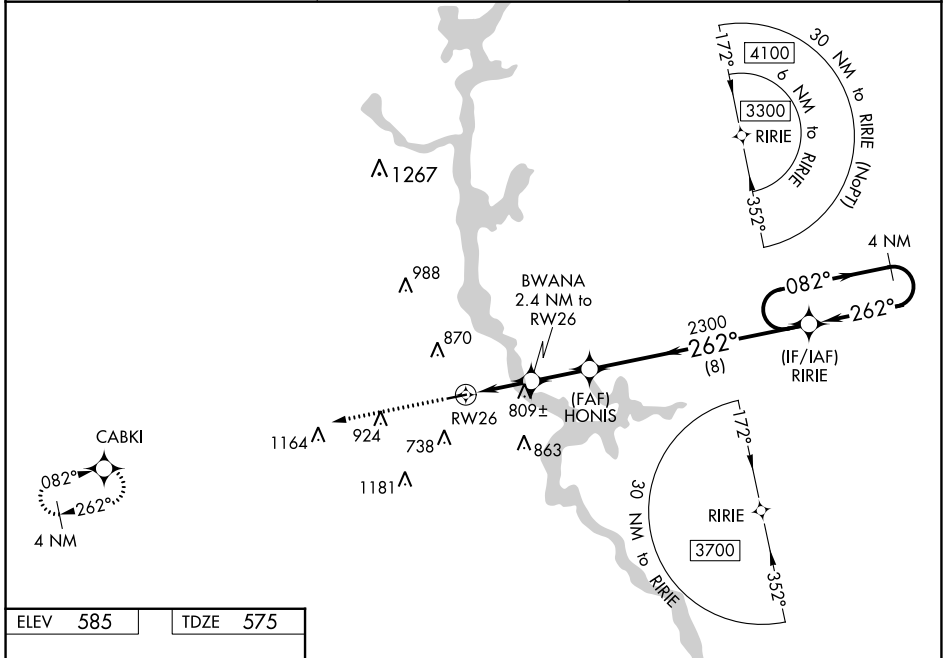
**NA** DME/DME RNP-0.3 NA. Procedure NA at night. Use Shelby County altimeter setting; when not received, use Merkel Field Sylacauga Muni altimeter setting and increase all MDA 20 feet and LP visibility Cat C/D ½ mile. Helicopter visibility reduction below 1 SM NA.

**MISSED APPROACH:** Climb to 3000 direct CABKI and hold.

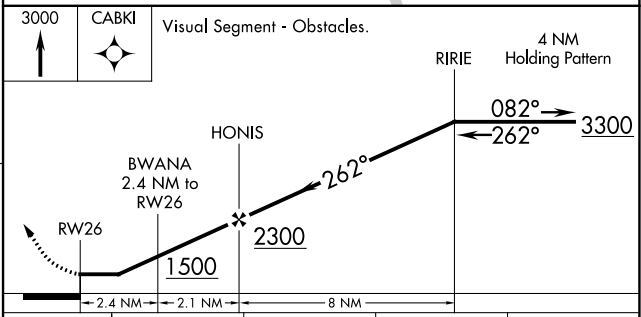
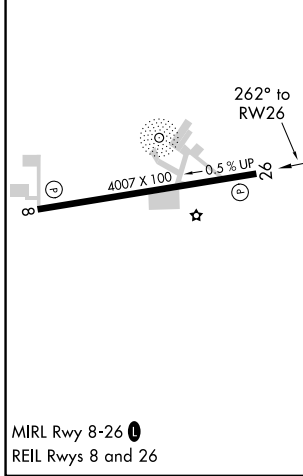
EET ASOS-3  
**134.325**

MONTGOMERY APP CON ★  
**121.2 269.05**

UNICOM  
**122.8 (CTAF) Ø**



ELEV <b>585</b>	TDZE <b>575</b>
-----------------	-----------------



CATEGORY	A	B	C	D
LP MDA	1100-1	525 (600-1)	1100-1½	525 (600-1½)
LNAV MDA	1120-1	545 (600-1)	1120-1½	545 (600-1½)
<b>CIRCLING</b>	1260-1	675 (800-1)	1280-2 695 (700-2)	1600-3 1015 (1100-3)

SE-4, 22 FEB 2024 to 21 MAR 2024

SE-4, 22 FEB 2024 to 21 MAR 2024